

PRÁCTICA 10. JOHN KEATS

La Belle Dame Sans Merci

I.

O what can ail thee, knight-at-arms,
Alone and palely loitering?
The sedge has wither'd from the lake,
And no birds sing.

II.

O what can ail thee, knight-at-arms!
So haggard and so woe-begone?
The squirrel's granary is full,
And the harvest's done.

III.

I see a lily on thy brow
With anguish moist and fever dew,
And on thy cheeks a fading rose
Fast withereth too.

IV.

I met a lady in the meads,
Full beautiful—a faery's child,
Her hair was long, her foot was light,
And her eyes were wild.

V.

I made a garland for her head,
And bracelets too, and fragrant zone;
She look'd at me as she did love,
And made sweet moan.

VI.

I set her on my pacing steed,
And nothing else saw all day long,
For sidelong would she bend, and sing
A faery's song.

VII.

She found me roots of relish sweet,

And honey wild, and manna dew,
And sure in language strange she said—
“I love thee true.”

VIII.

She took me to her elfin grot,
And there she wept, and sigh'd fill sore,
And there I shut her wild wild eyes
With kisses four.

IX.

And there she lulled me asleep,
And there I dream'd—Ah! woe betide!
The latest dream I ever dream'd
On the cold hill's side.

X.

I saw pale kings and princes too,
Pale warriors, death-pale were they all;
They cried—“La Belle Dame sans Merci
Hath thee in thrall!”

XI.

I saw their starved lips in the gloam,
With horrid warning gaped wide,
And I awoke and found me here,
On the cold hill's side.

XII.

And this is why I sojourn here,
Alone and palely loitering,
Though the sedge is wither'd from the lake,
And no birds sing.

10.1. Answer the following questions about this poem:

1. Write a brief summary of this poem:

2. What is the main topic?
3. Who are the main characters?
4. Where and when is the poem set?
5. Can you relate this ballad to some other text of similar content and structure (myth, fairy tale, song, comic, movie)?
6. What is the role of the narrator? Who is the narrator, anyway?
7. What view of love appears in the poem? What are its consequences?
8. Do you think La Belle Dame fits in the stereotype of the seductive temptress, i.e., Eve?
9. What is the significance of the knight's dream with regard to his own fate?
10. What is the role of the natural elements and the natural setting in the poem?
11. Consider the following pictures about *La Belle Dame Sans Merci*:

PLATE 1. ARTHUR HUGUES (1832–1915)

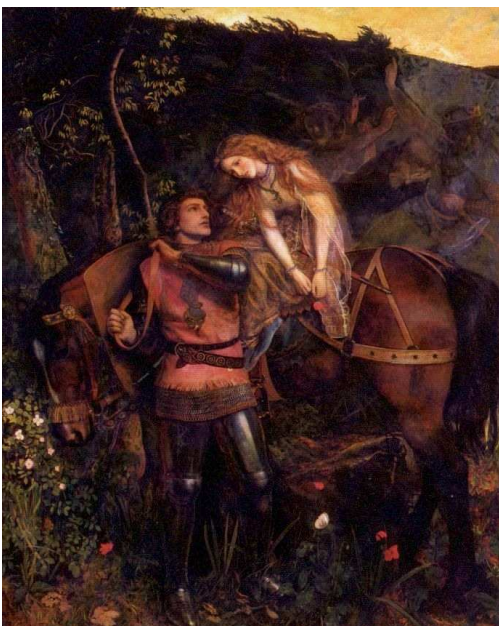


PLATE 2. HENRY MAYNELL RHEAM (1859-1920)



PLATE 3. JOHN WILLIAM WATERHOUSE (1849-1917).



PLATE 4. FRANK COWPER (1877-1958)



PLATE 5. SIR FRANK DICKSEE (1853-1928)



All these pictures belong to the pre-raphaelite period in England.

- What do you see in common among them?
- Which is the one you feel best captures the essence of the poem?
- Which is the one you like best? And the one you like least? Why?