

**OCW INA 2008**  
**SESIÓN PRÁCTICA 1**  
**Diversidad estructural de PORÍFEROS (Esponjas)**

Fuente original:

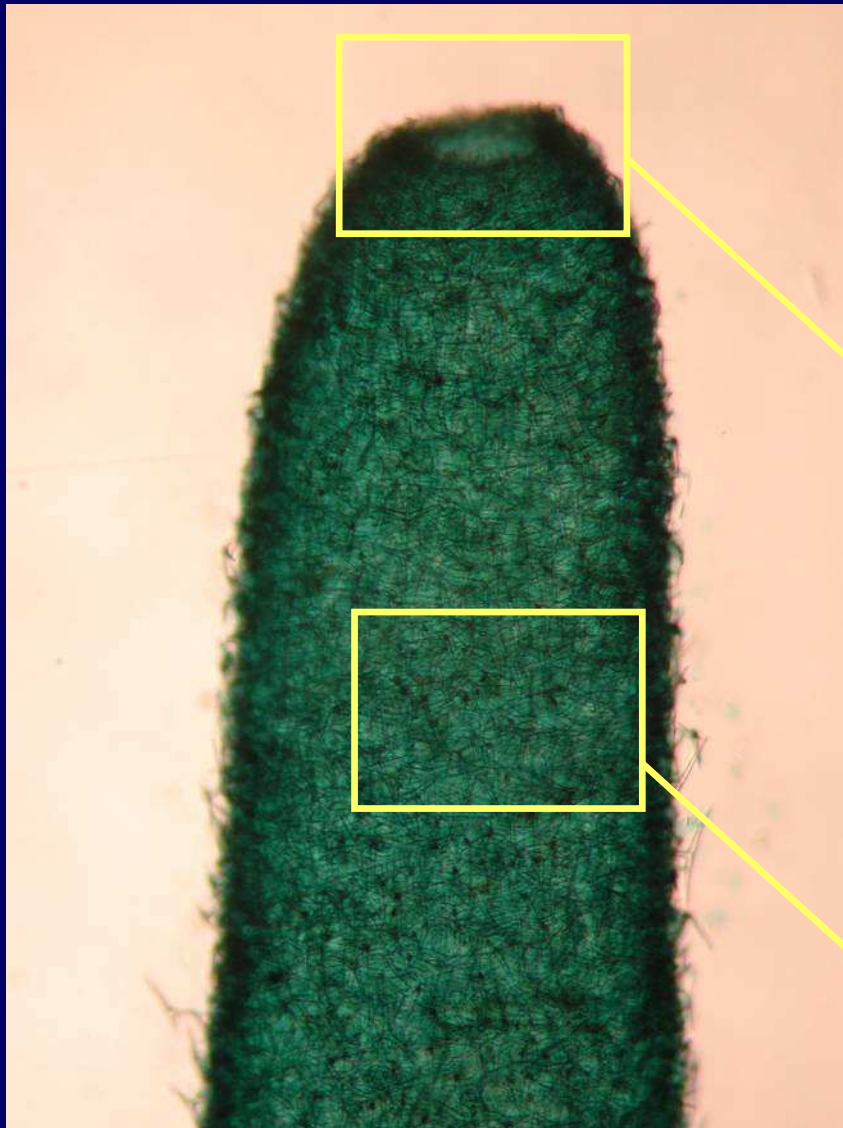
Práctica 2

Estudio morfoanatómico de los Poríferos.

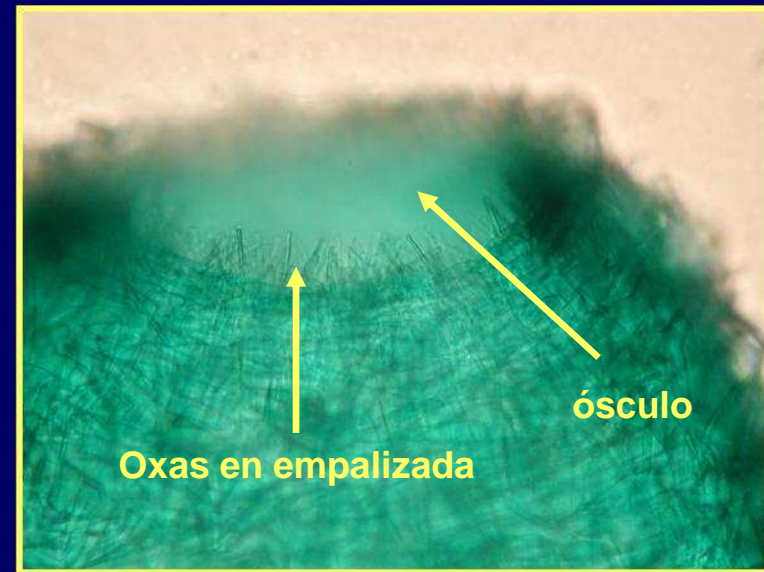
Estudio de los elementos esqueléticos: espículas y fibras de espongina

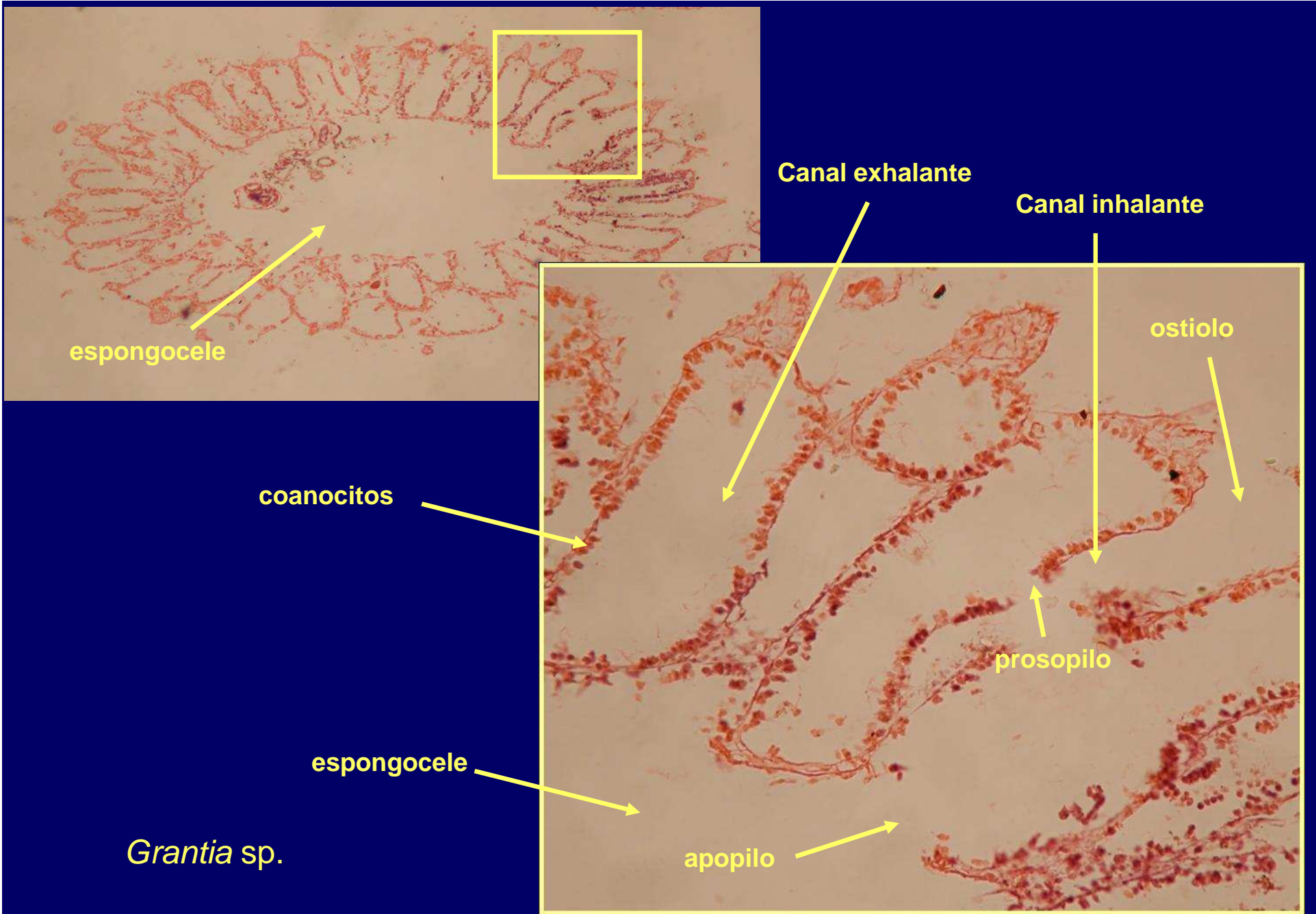
(Guía visual de las Prácticas de Zoología)

MD García, MI Arnaldos y JJ Presa



*Leucosolenia* sp.



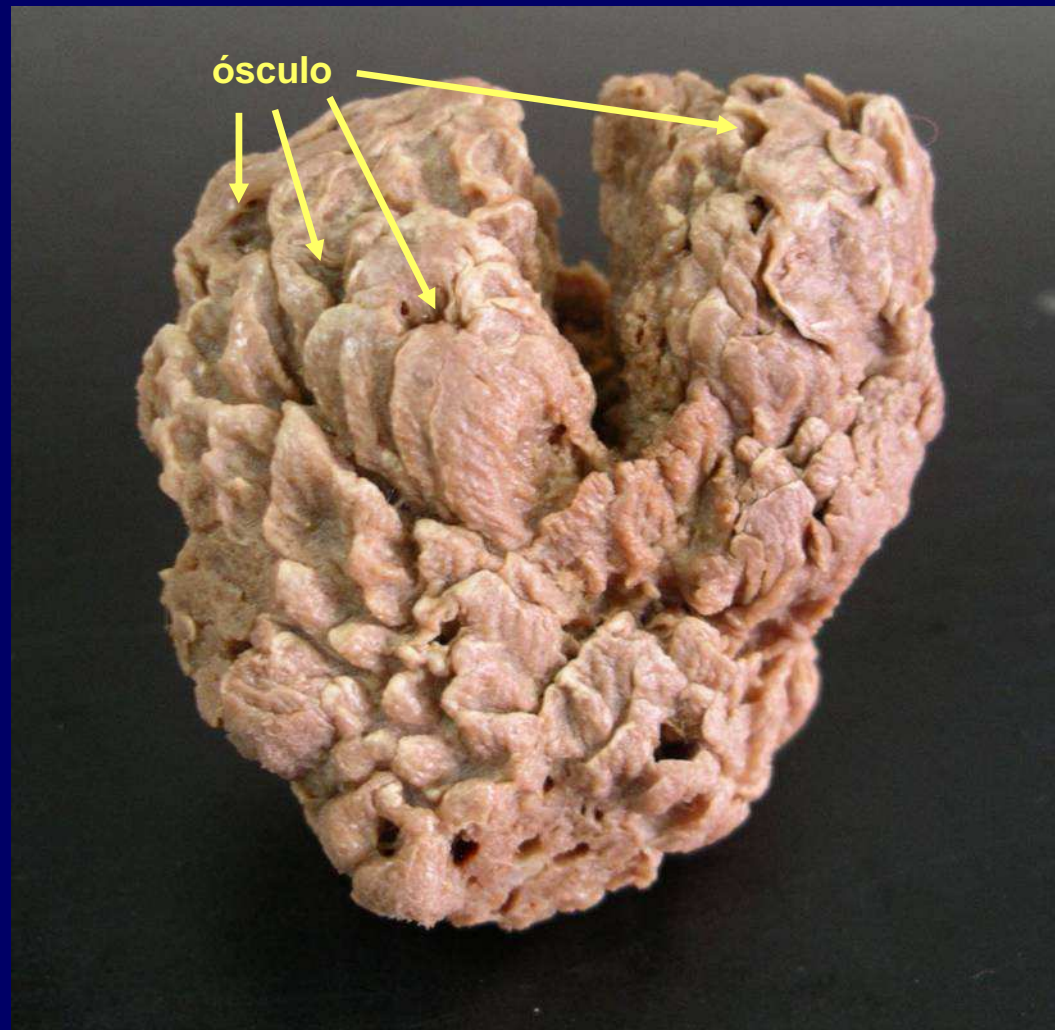


*Grantia* sp.

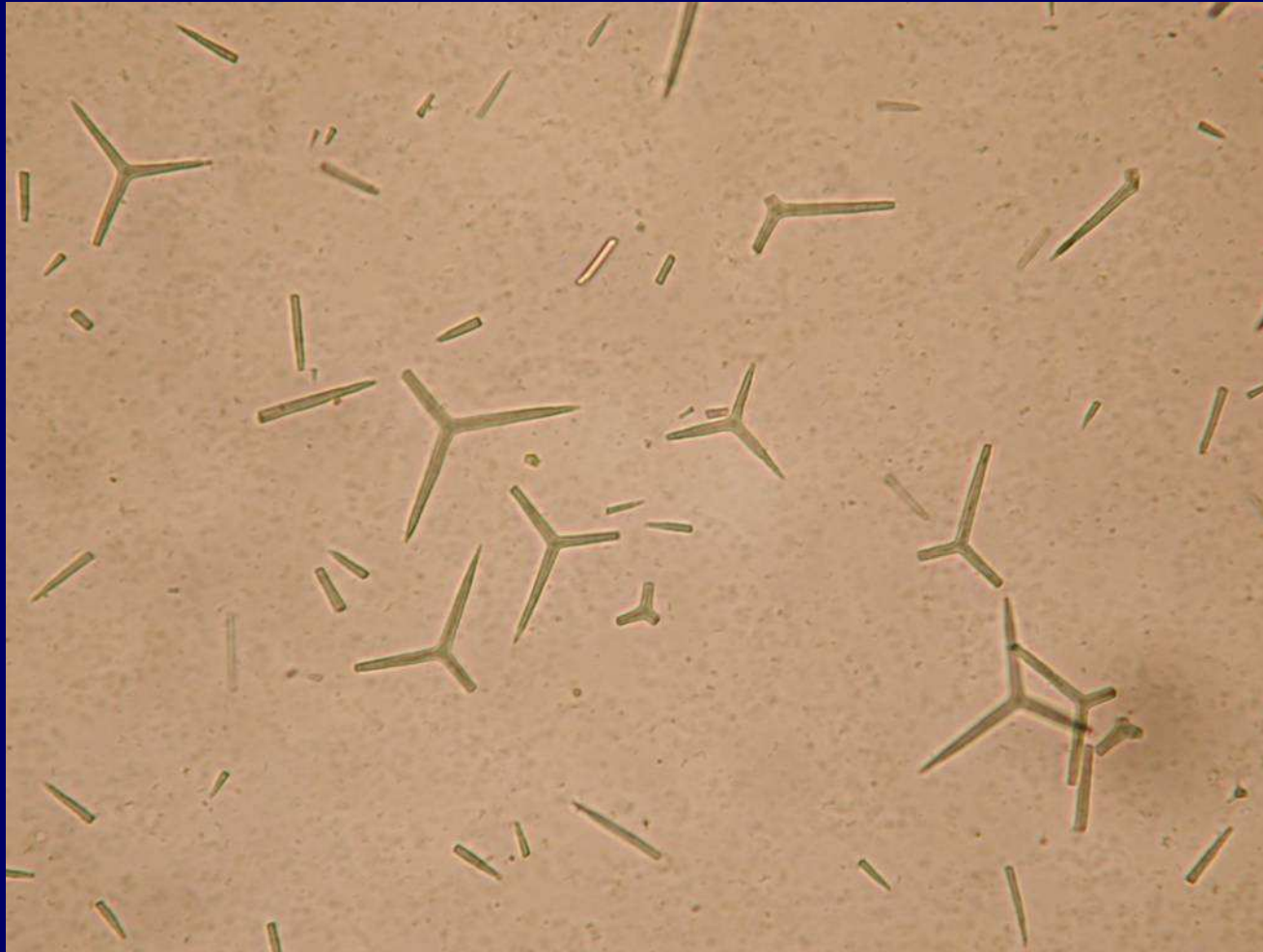




*Scypha* sp.

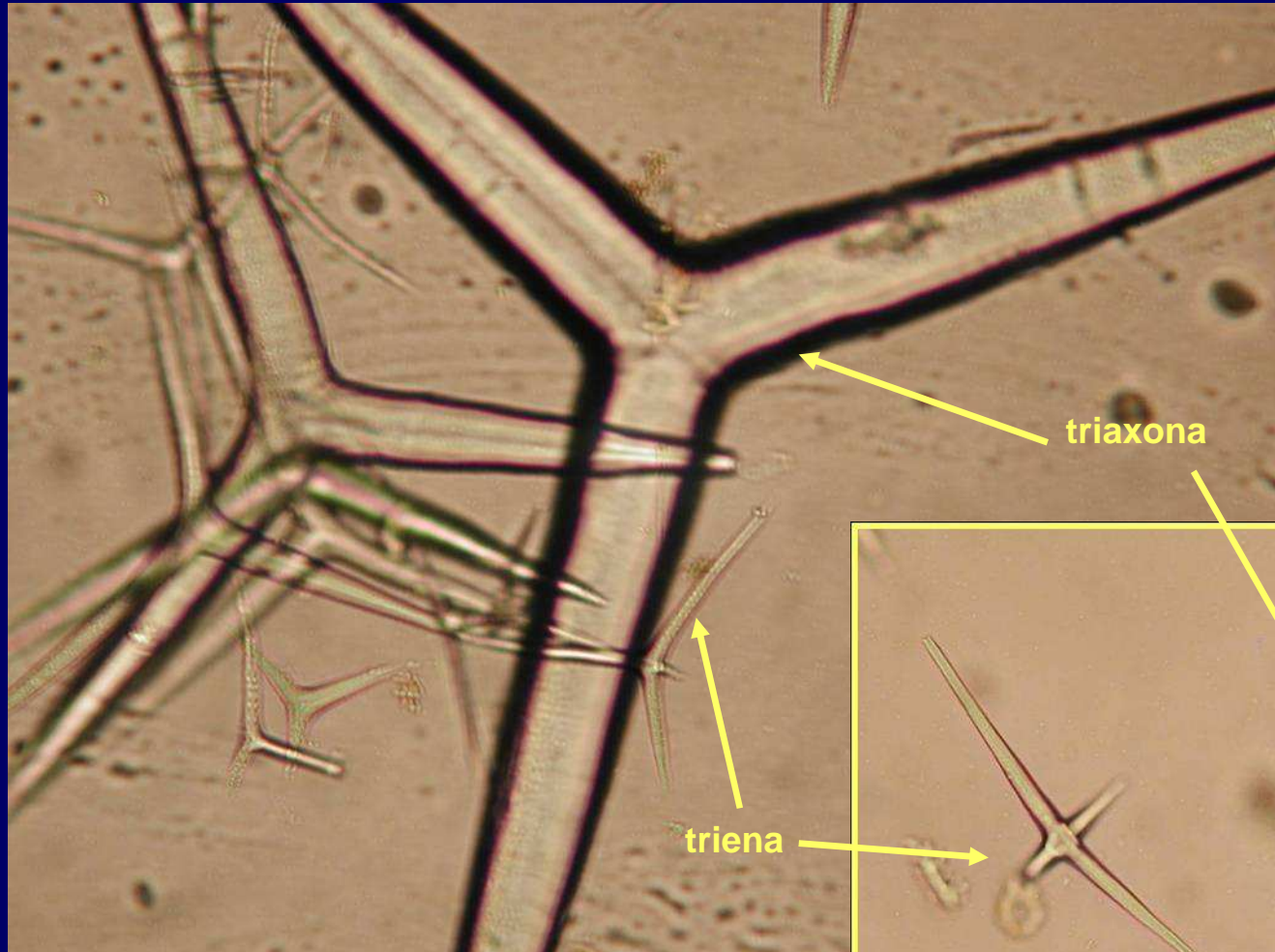


*Ircinia* sp.



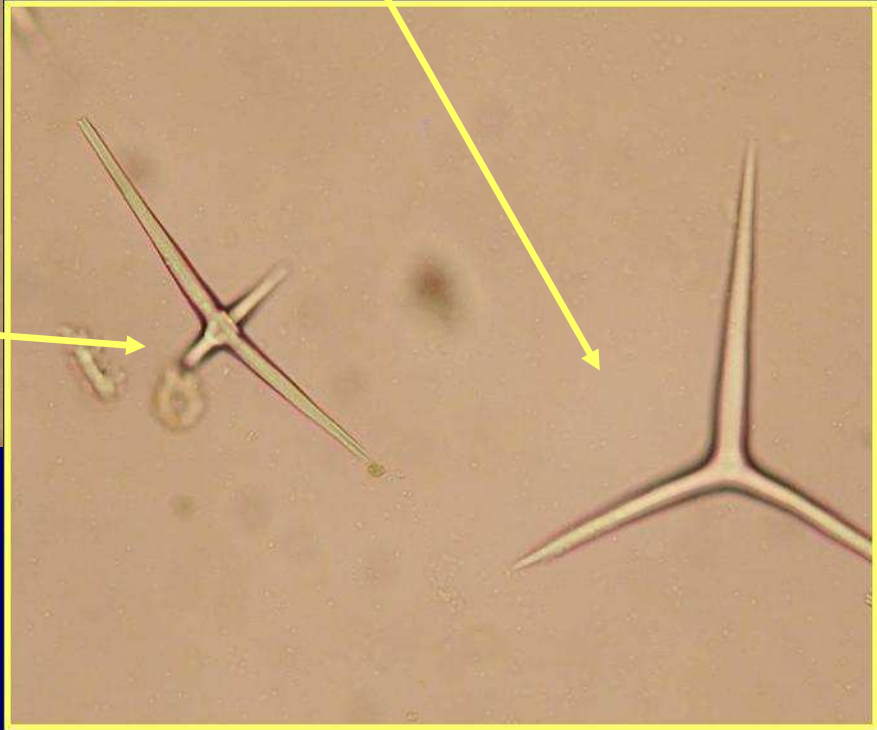
*Clathrina* sp.





triaxona

triena

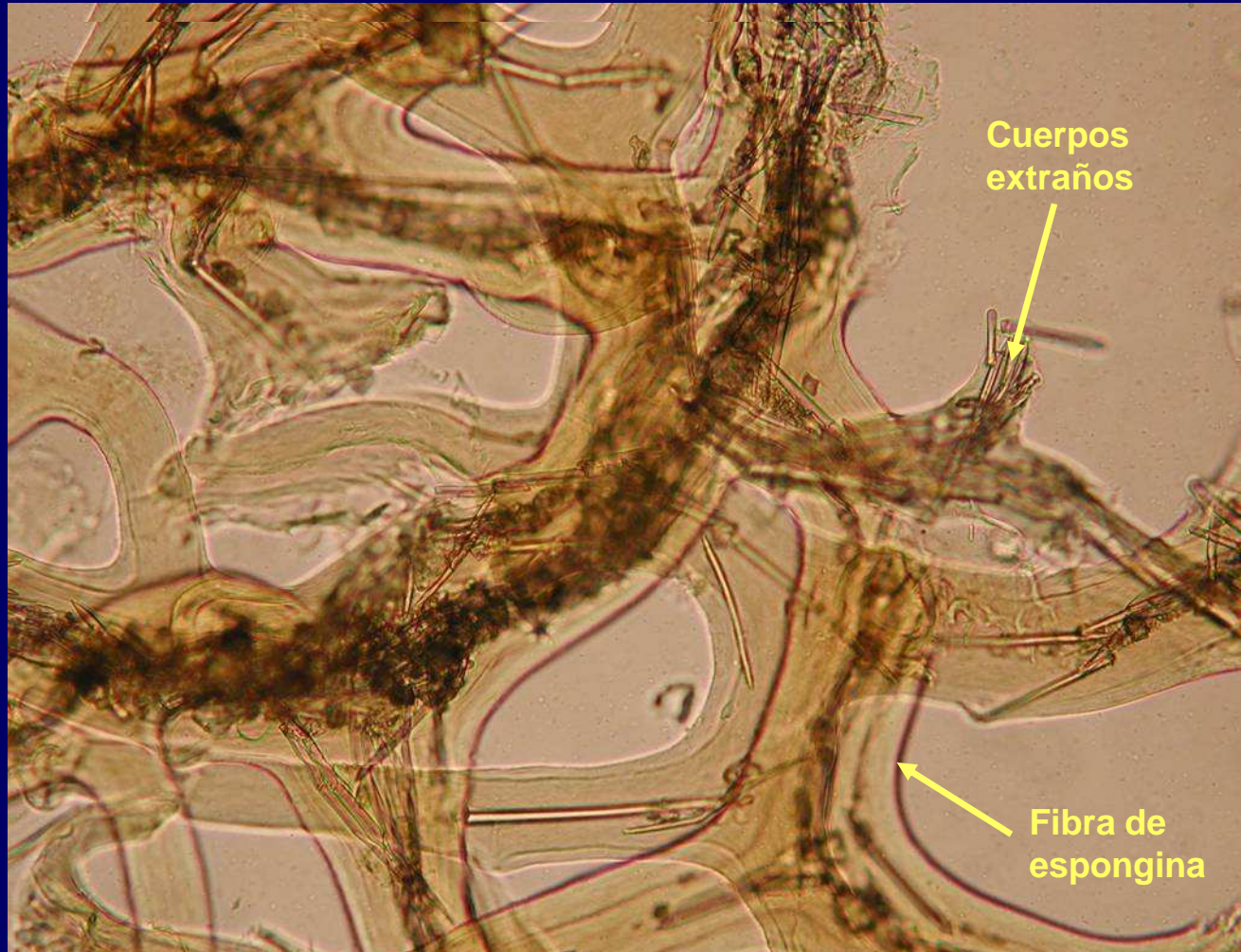


*Leuconia* sp.



*Axinella* sp.

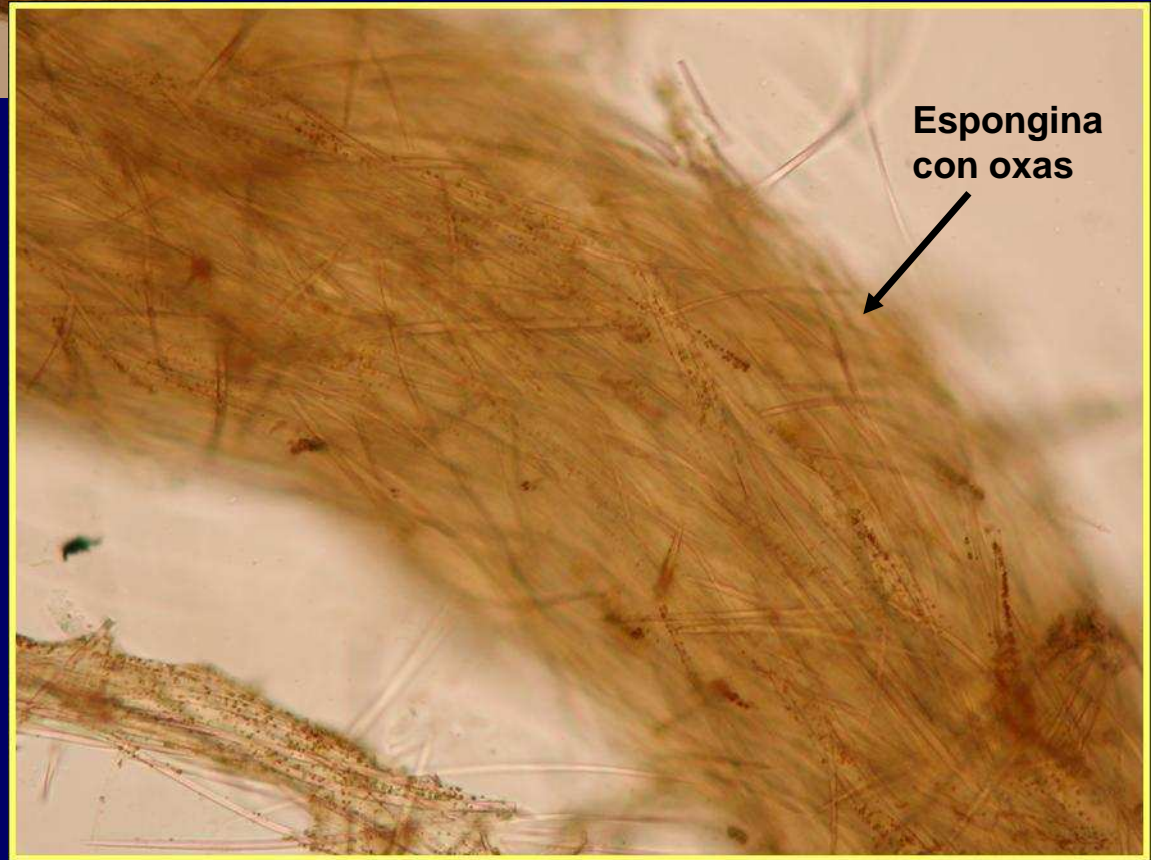




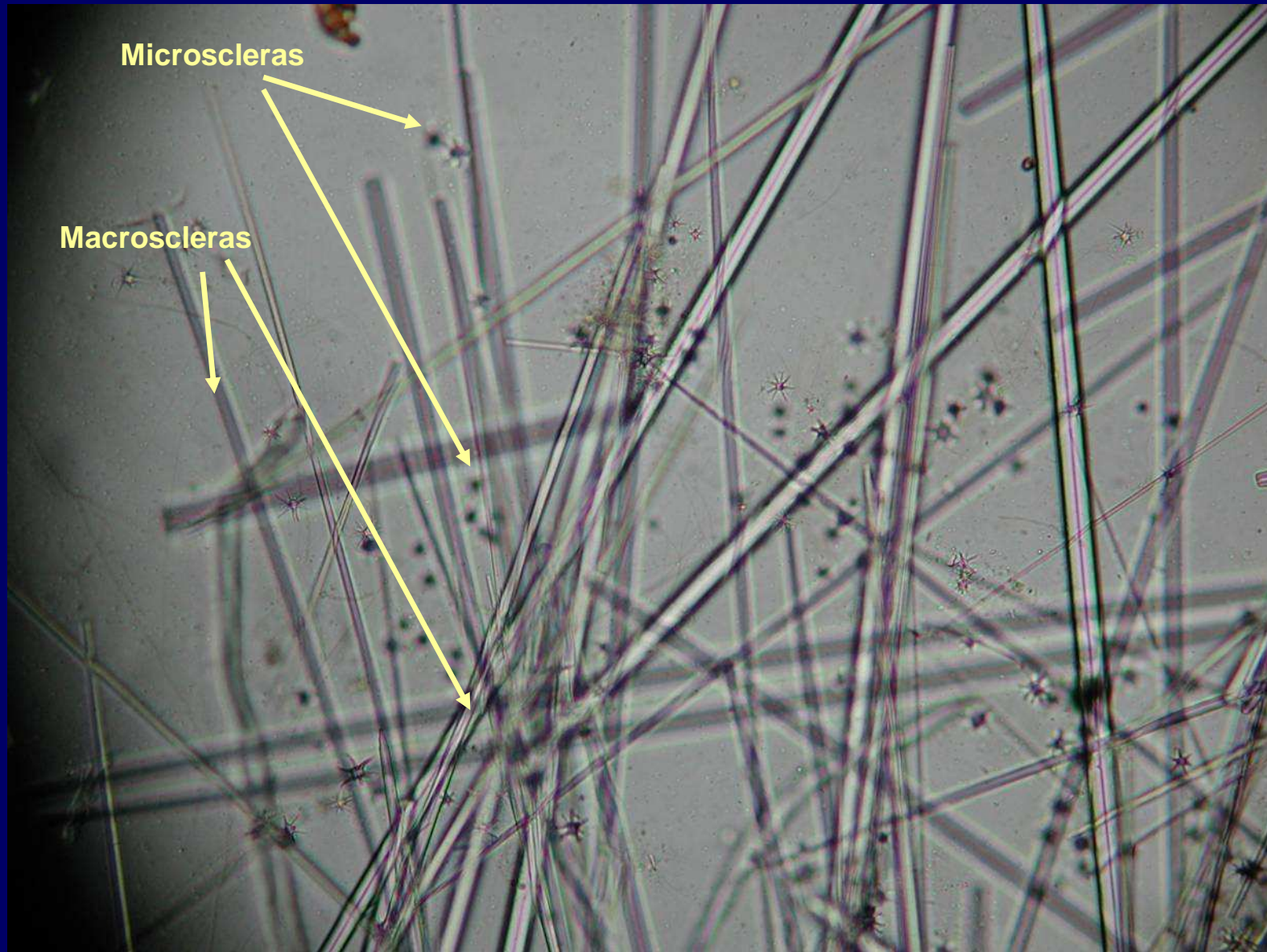
*Disidea* sp.



*Reniera* sp.

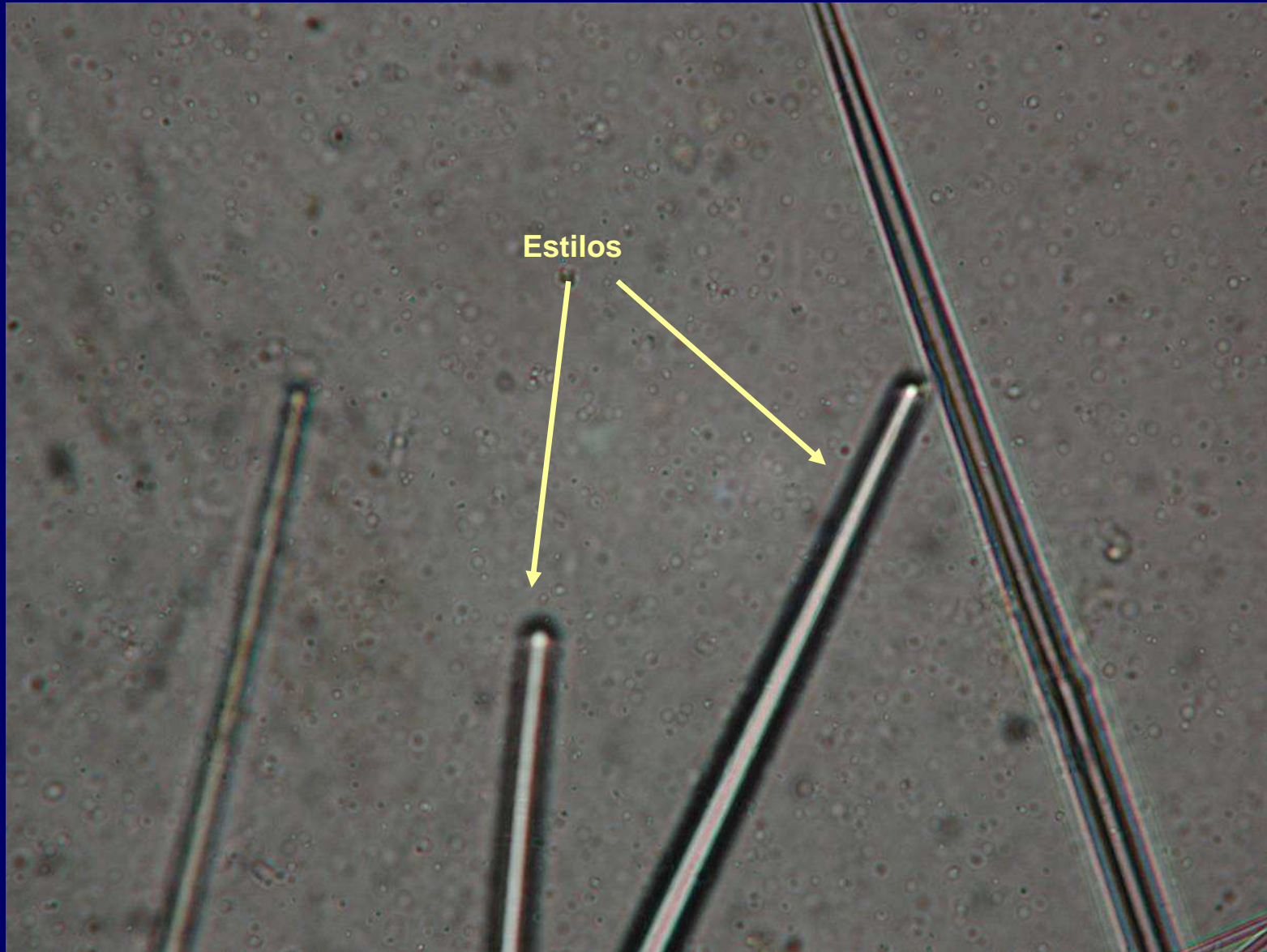




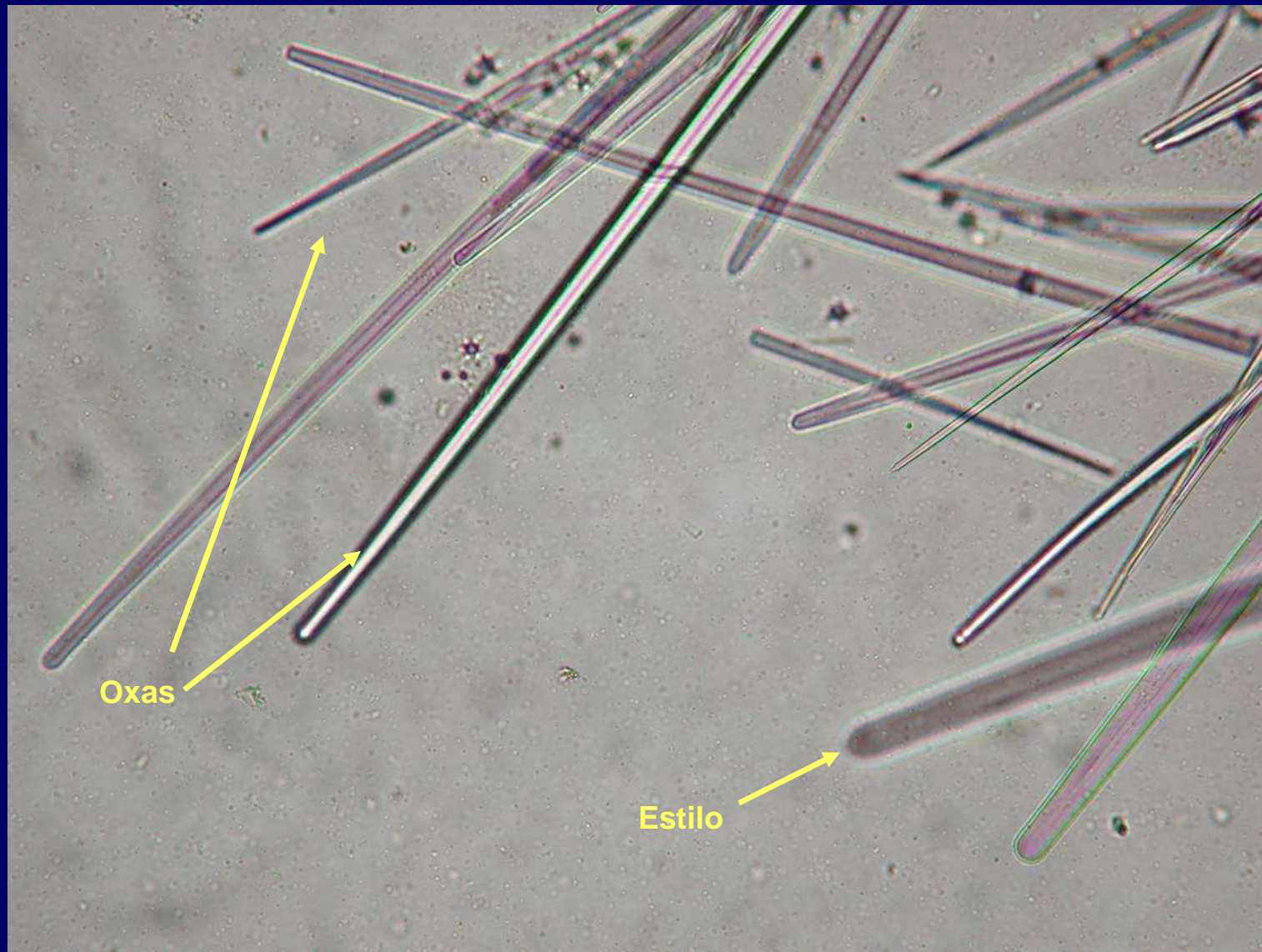


*Tethya* sp.



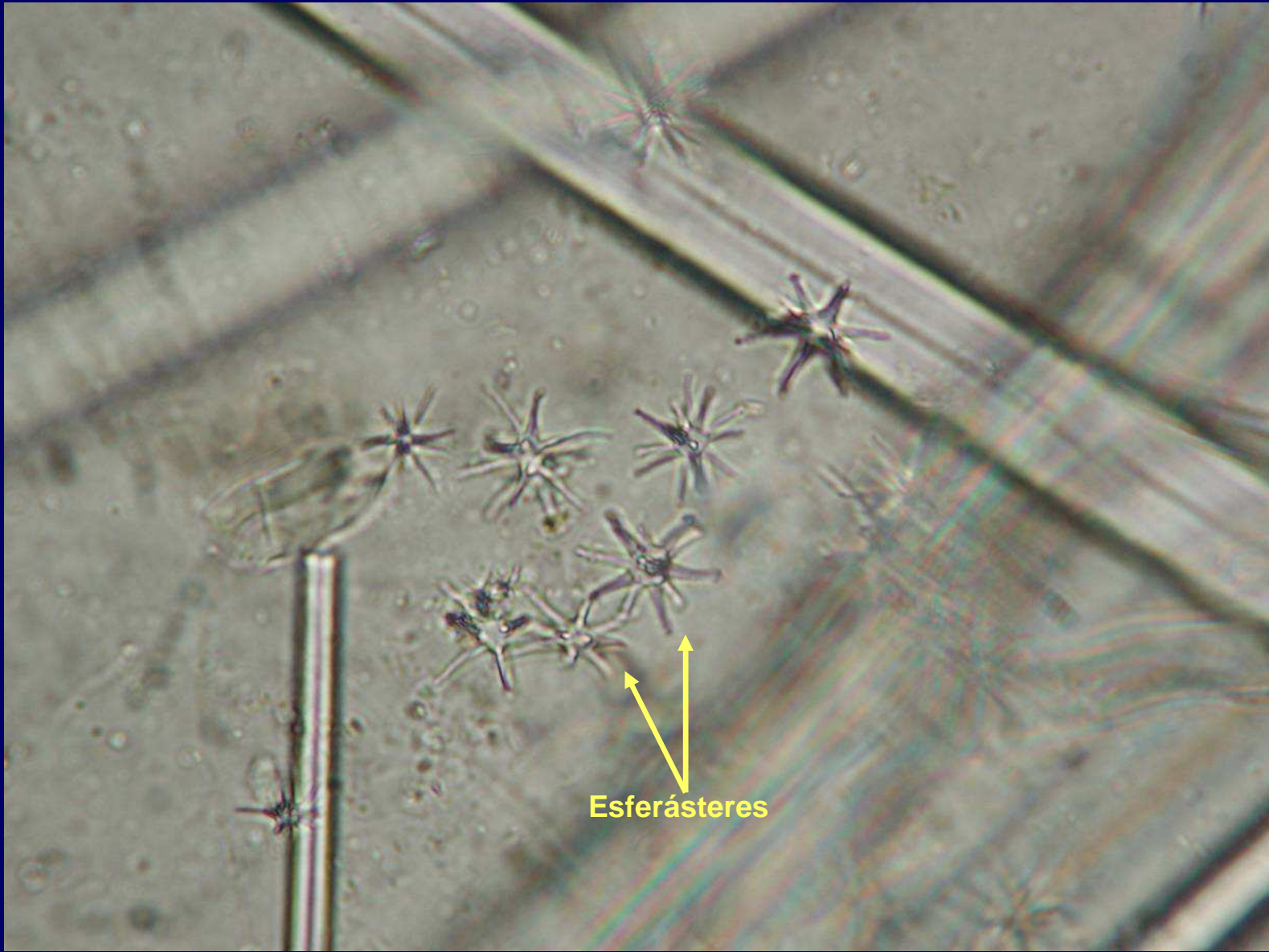


*Tethya* sp.



*Tethya* sp.



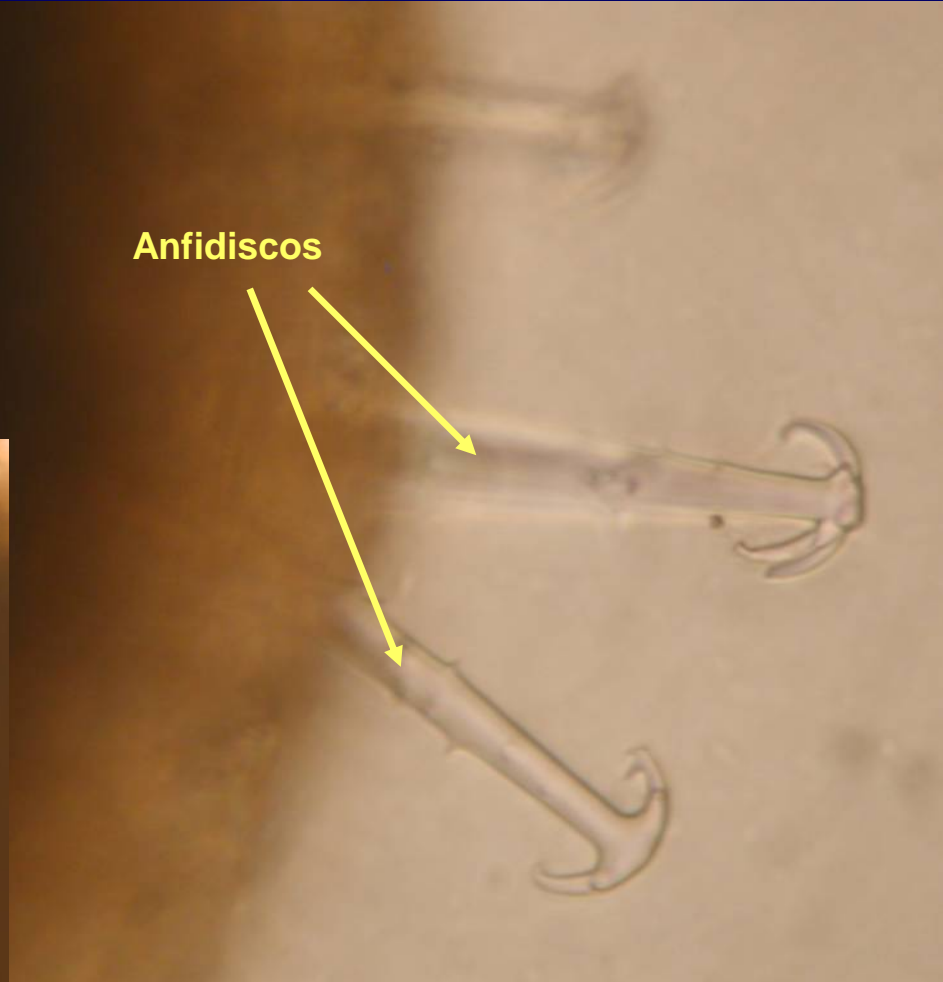
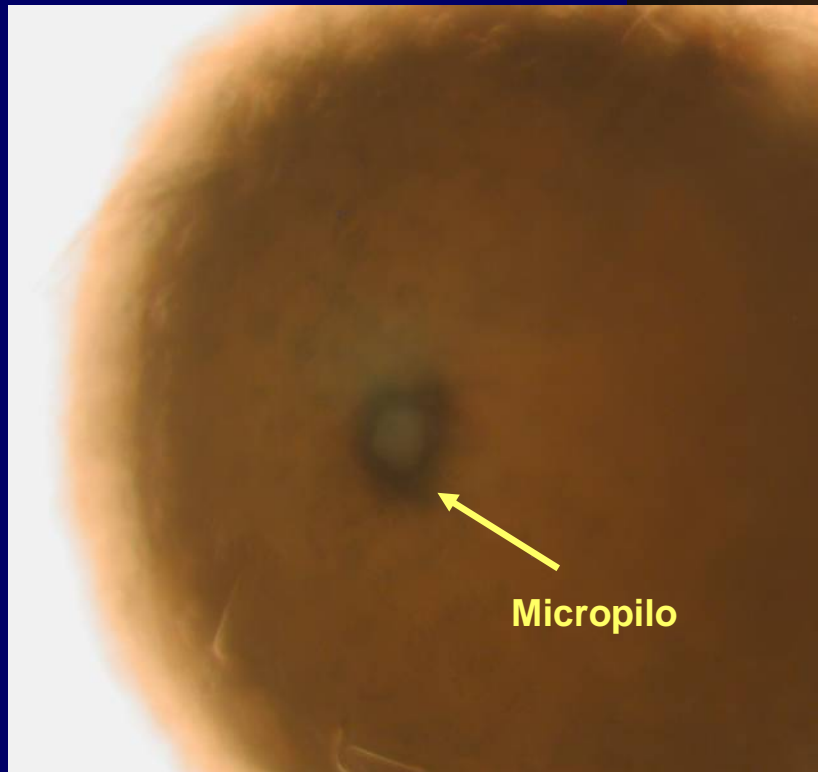
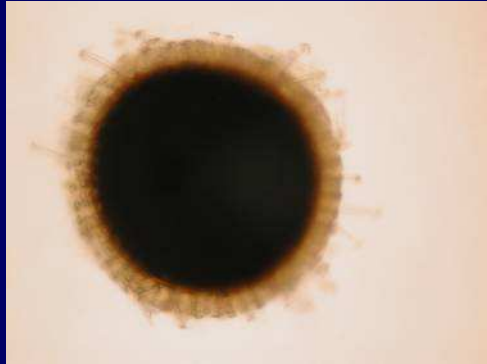


*Tethya* sp.





*Tethya* sp.



*Spongilla* sp. Gémulas