

OCW INA 2008
SESIÓN PRÁCTICA 2
Diversidad estructural de CNIDARIOS

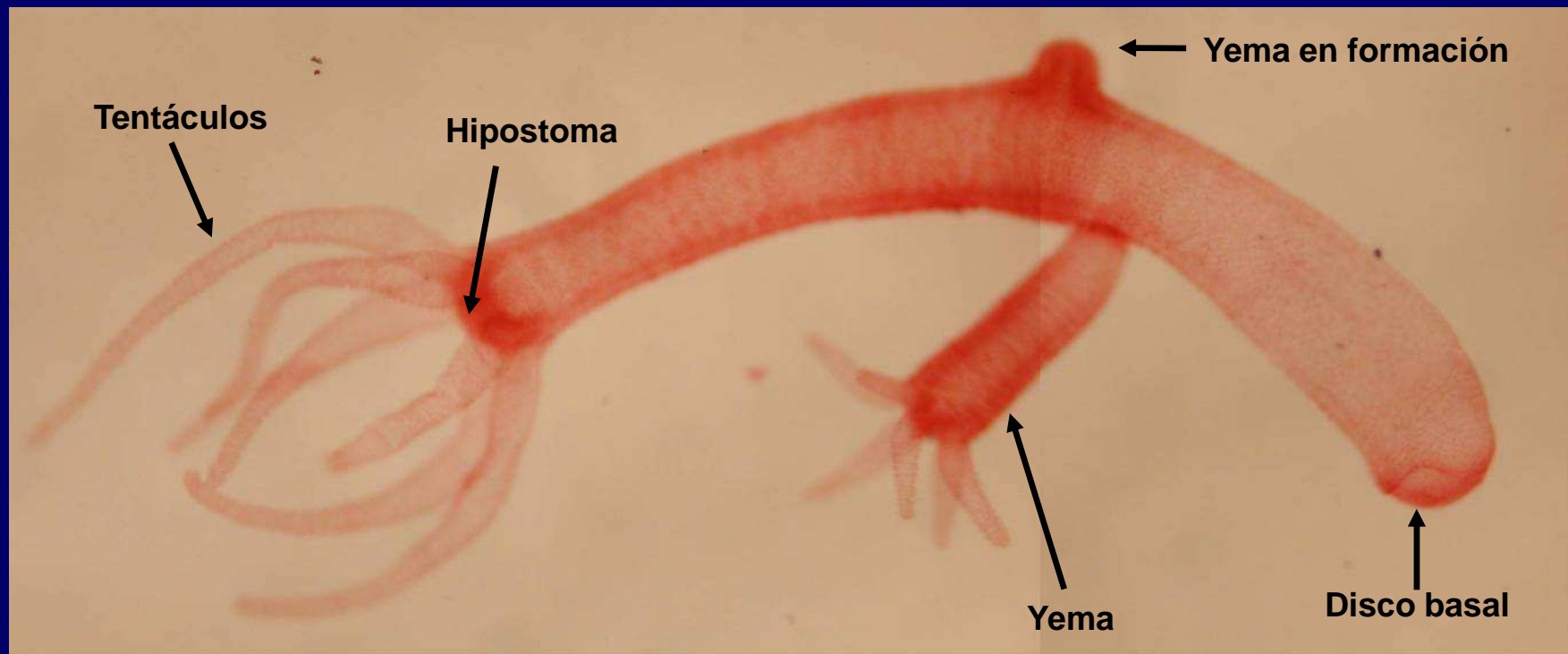
Fuente original:

Práctica 2

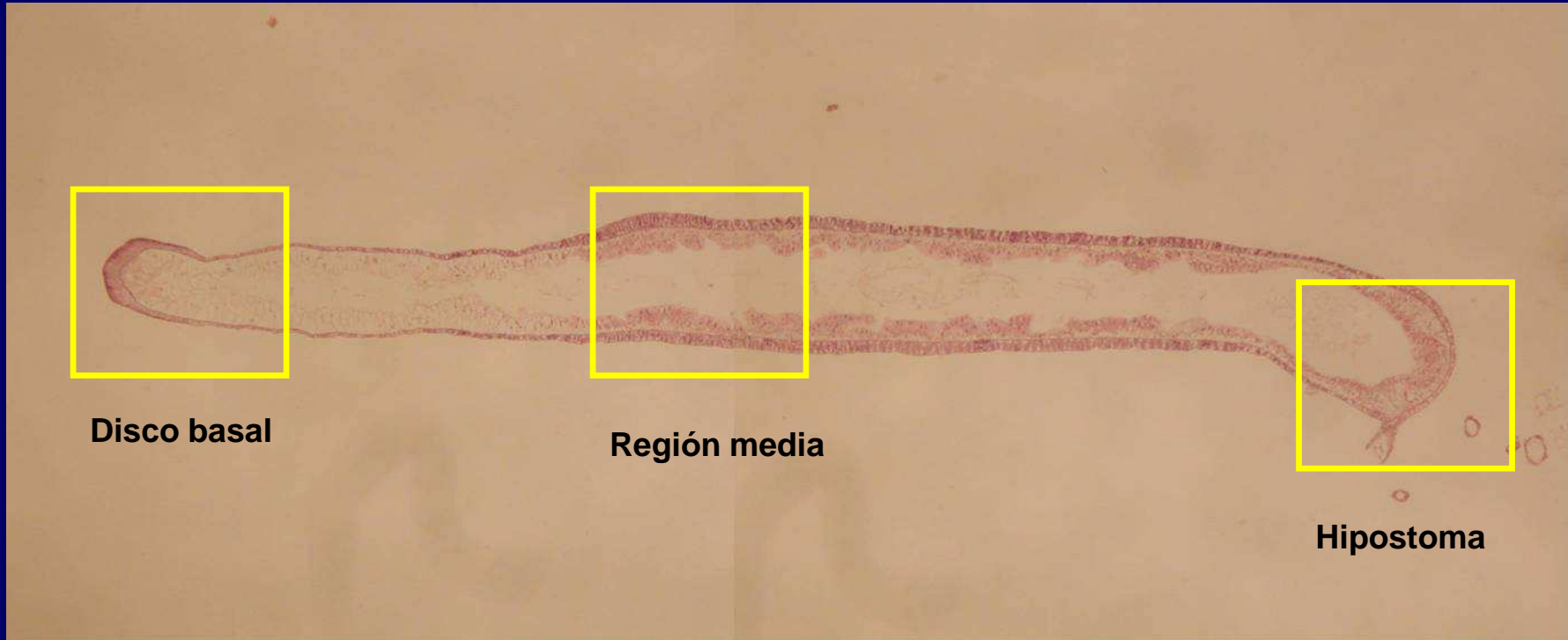
Estudio morfoanatómico de los Cnidarios. Estudio de Hidrozoos, Escifozoos y Antozoos con sus diferentes bioformas

(Guía visual de las Prácticas de Zoología)

MD García, MI Arnaldos y JJ Presa



Hydra sp. "in toto"

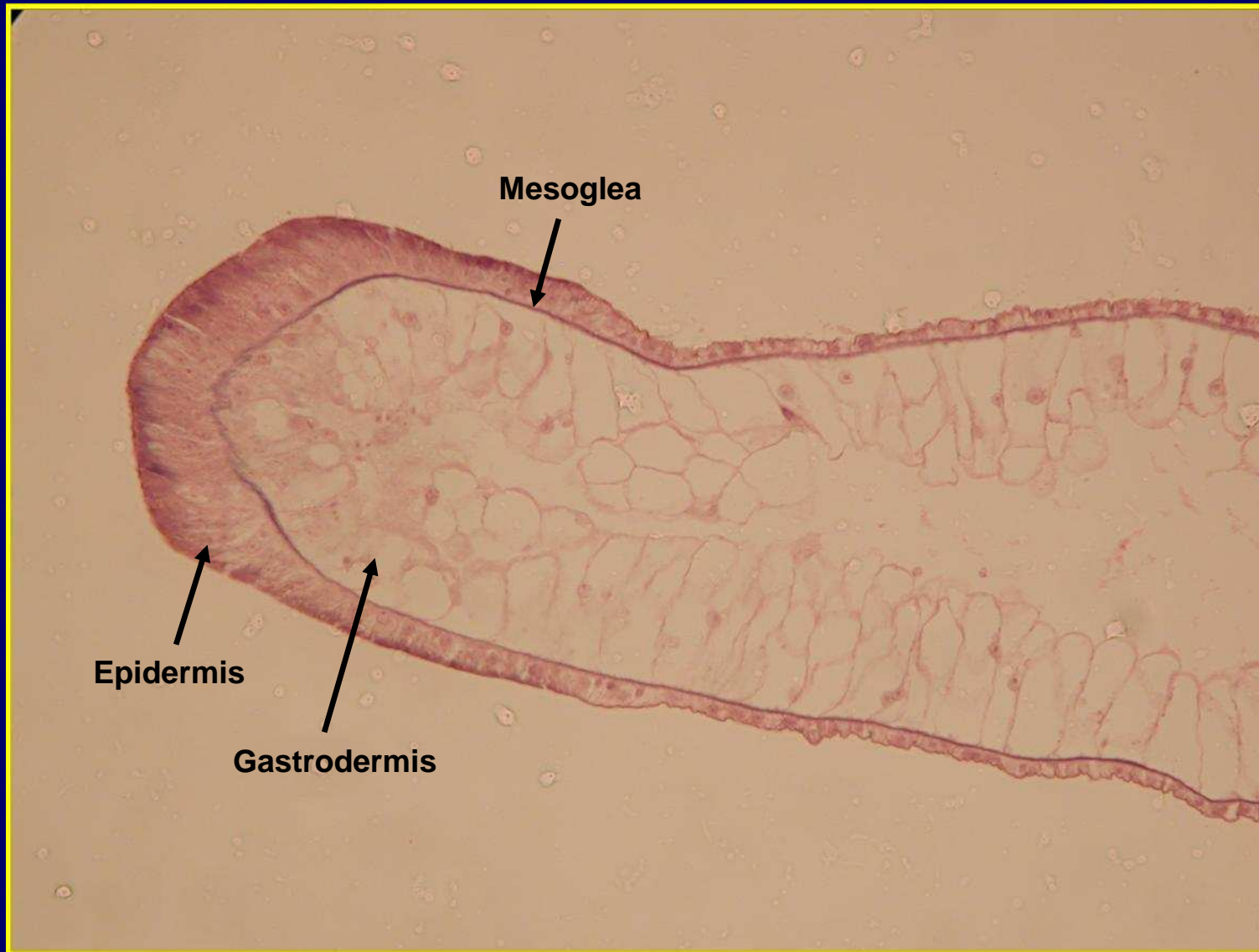


Disco basal

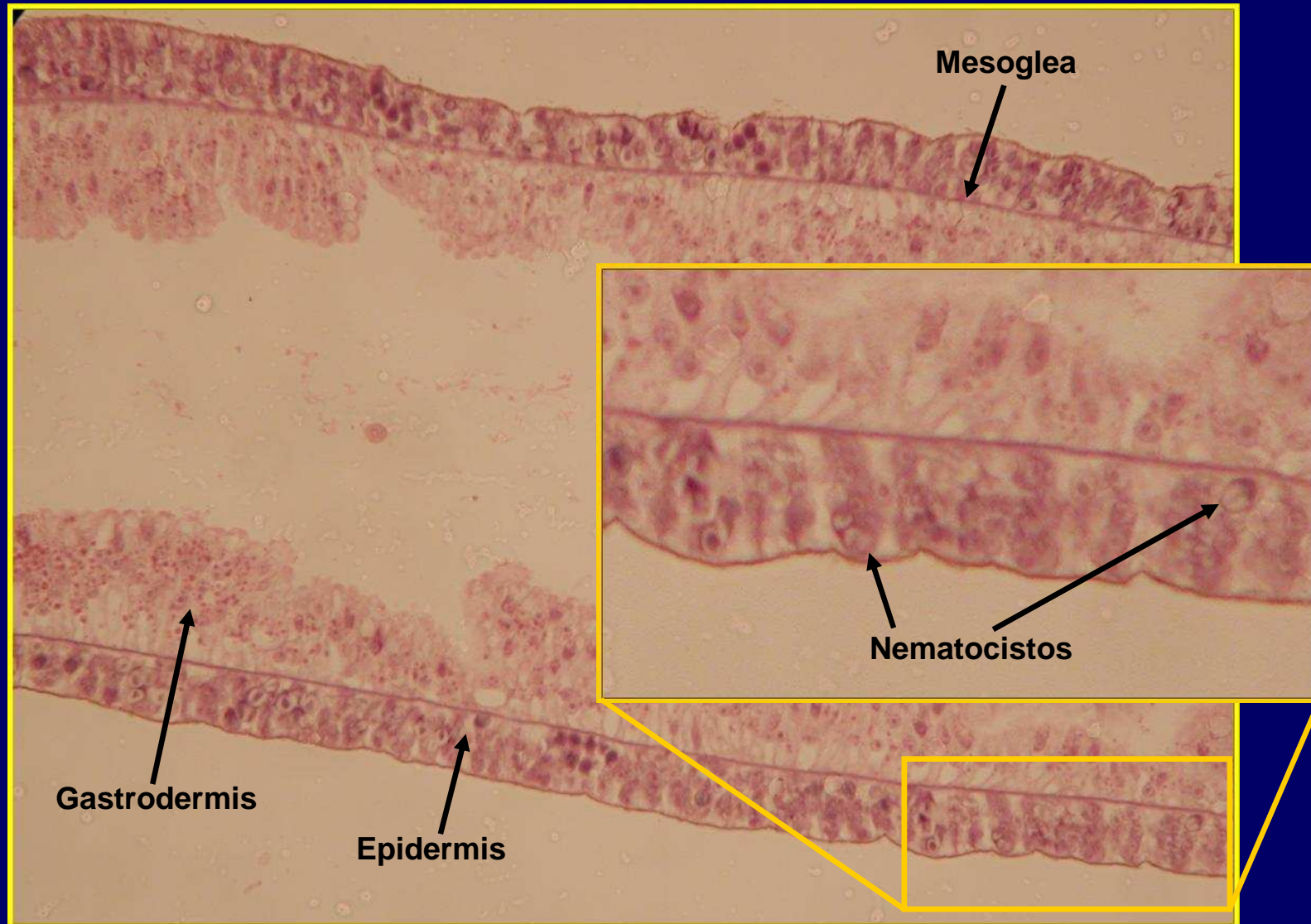
Región media

Hipostoma

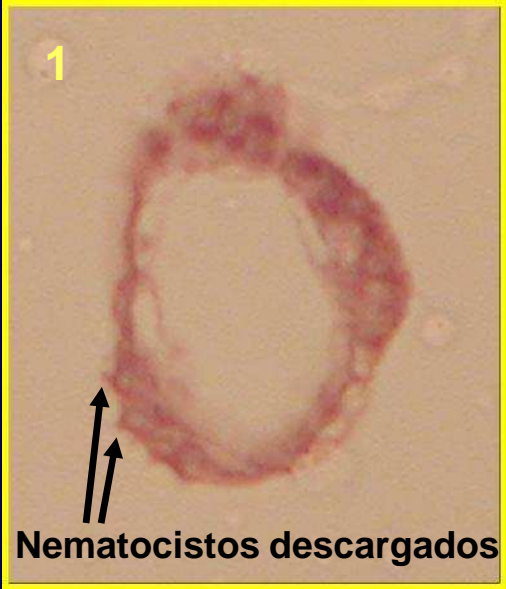
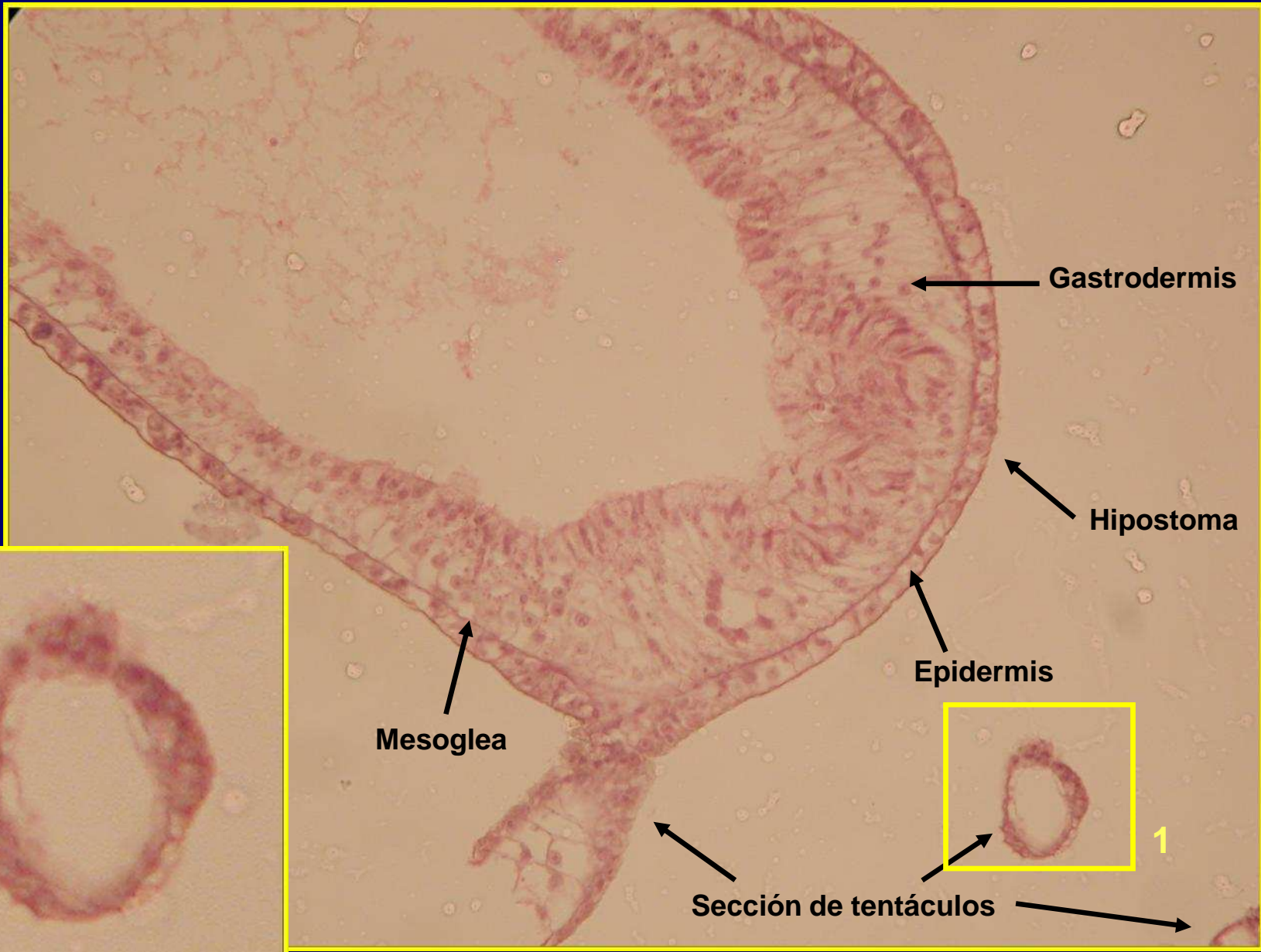
Hydra sp. Sección longitudinal



Hydra sp. Sección del discopodio

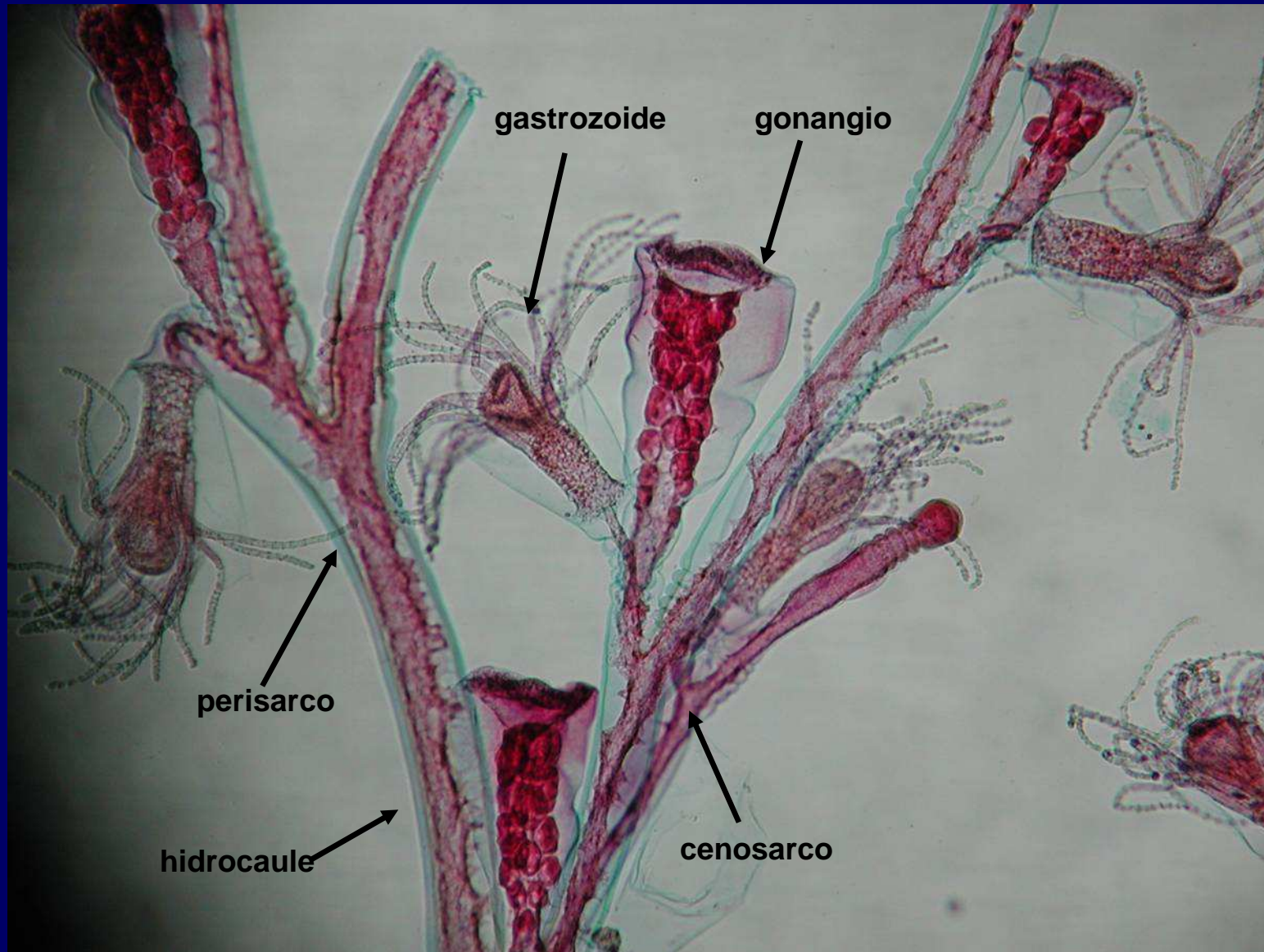


Hydra sp. Sección de la región media

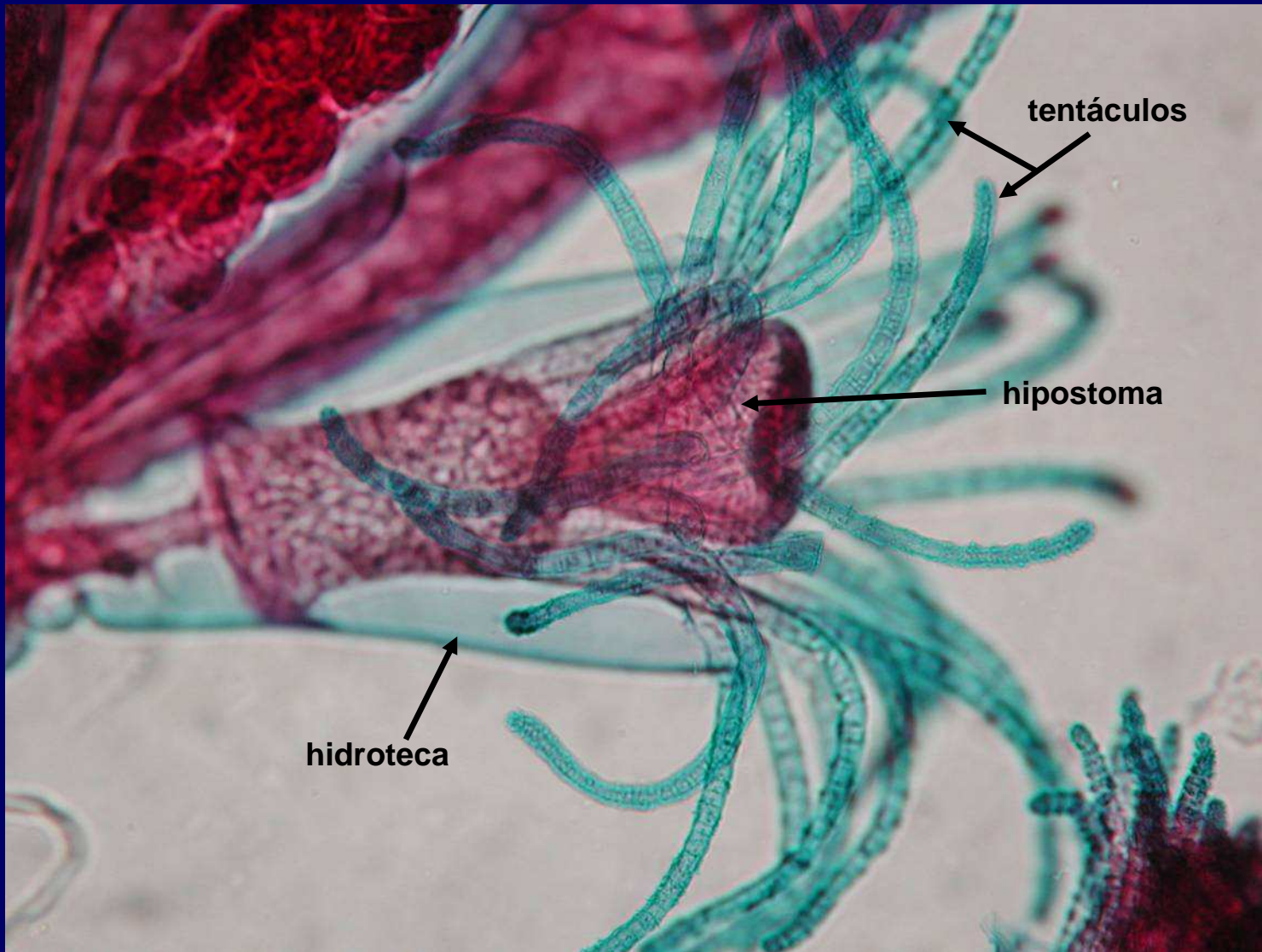


Hydra sp. Sección de la región del hipostoma

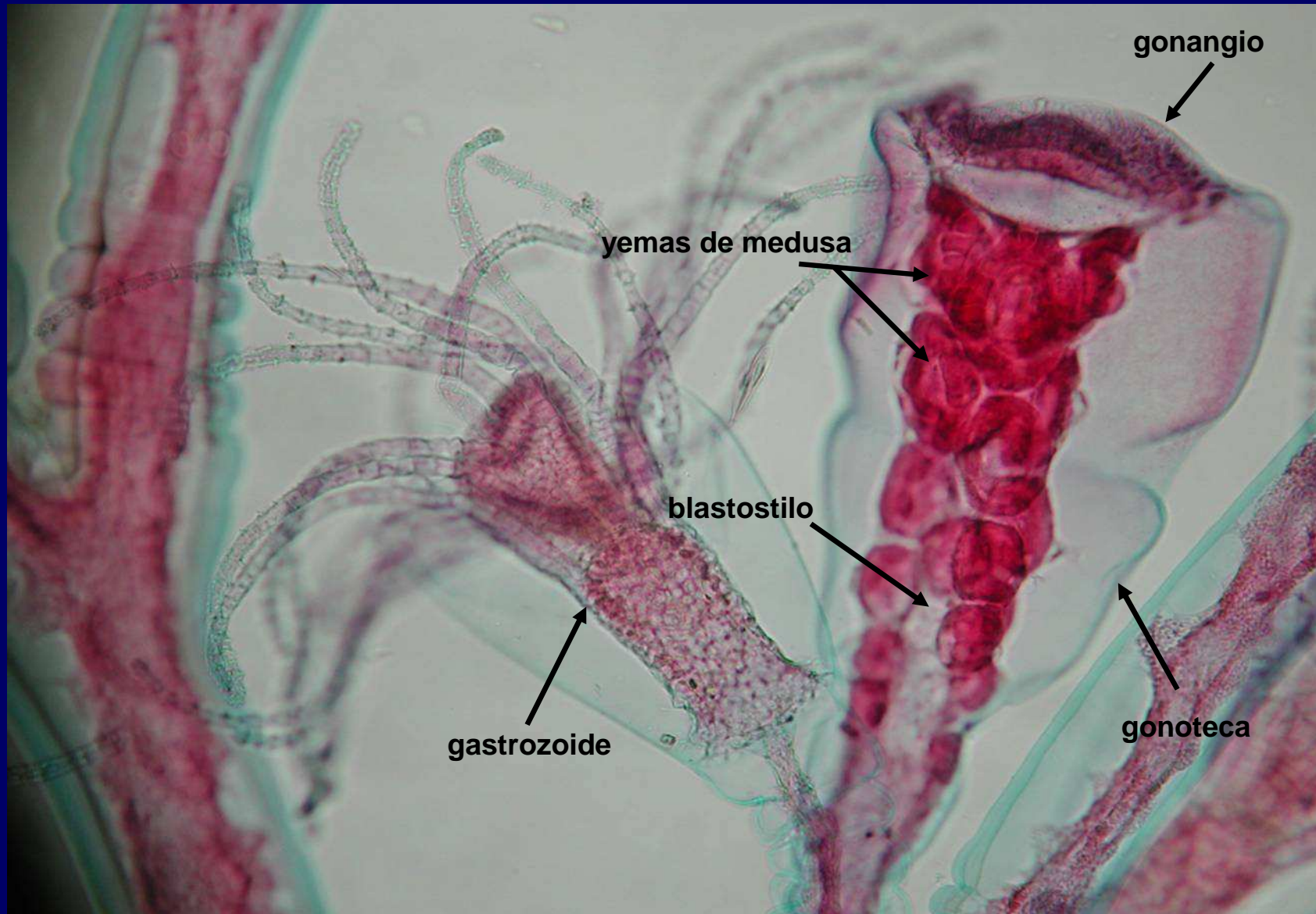




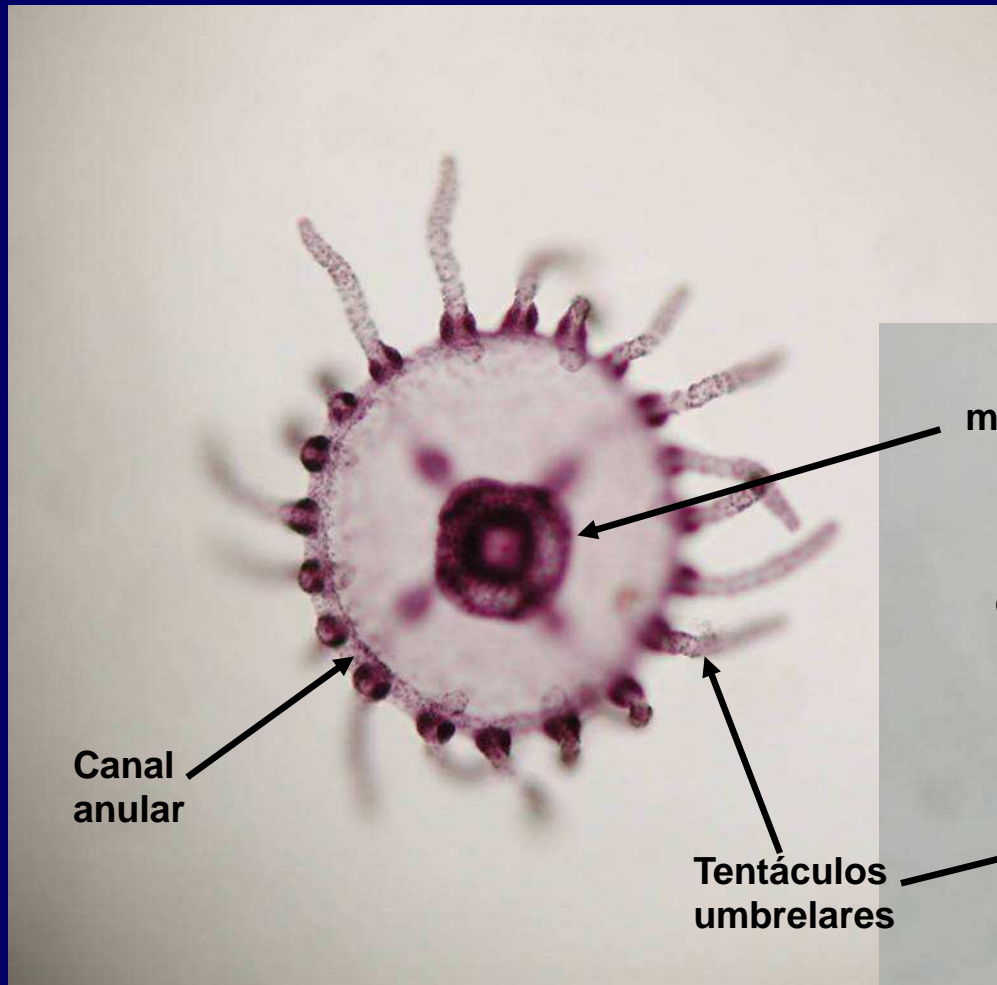
Obelia sp. Forma pólipos



Obelia sp. Gastrozoide

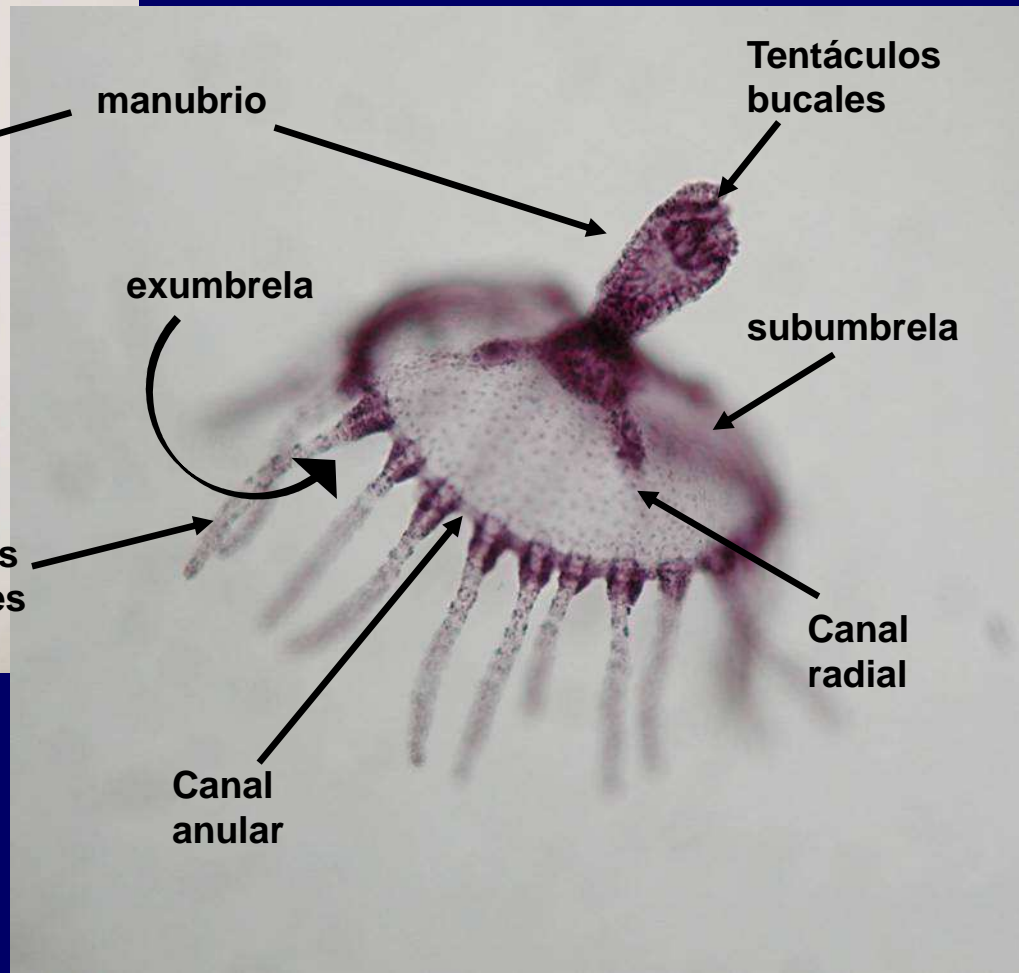


Obelia sp. Gonangio



Canal anular

Tentáculos umbrelares



manubrio

Tentáculos bucales

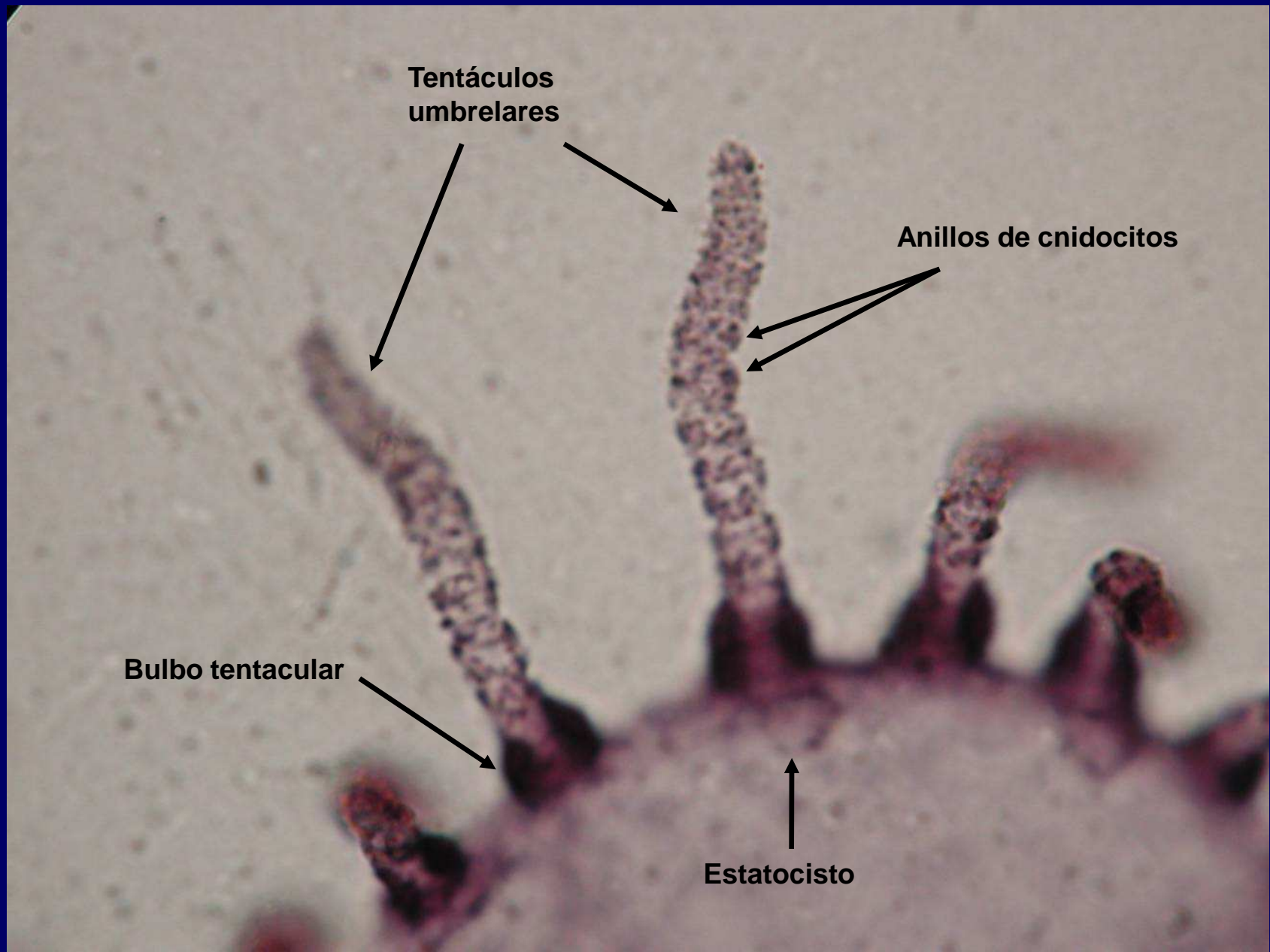
exumbrella

subumbrella

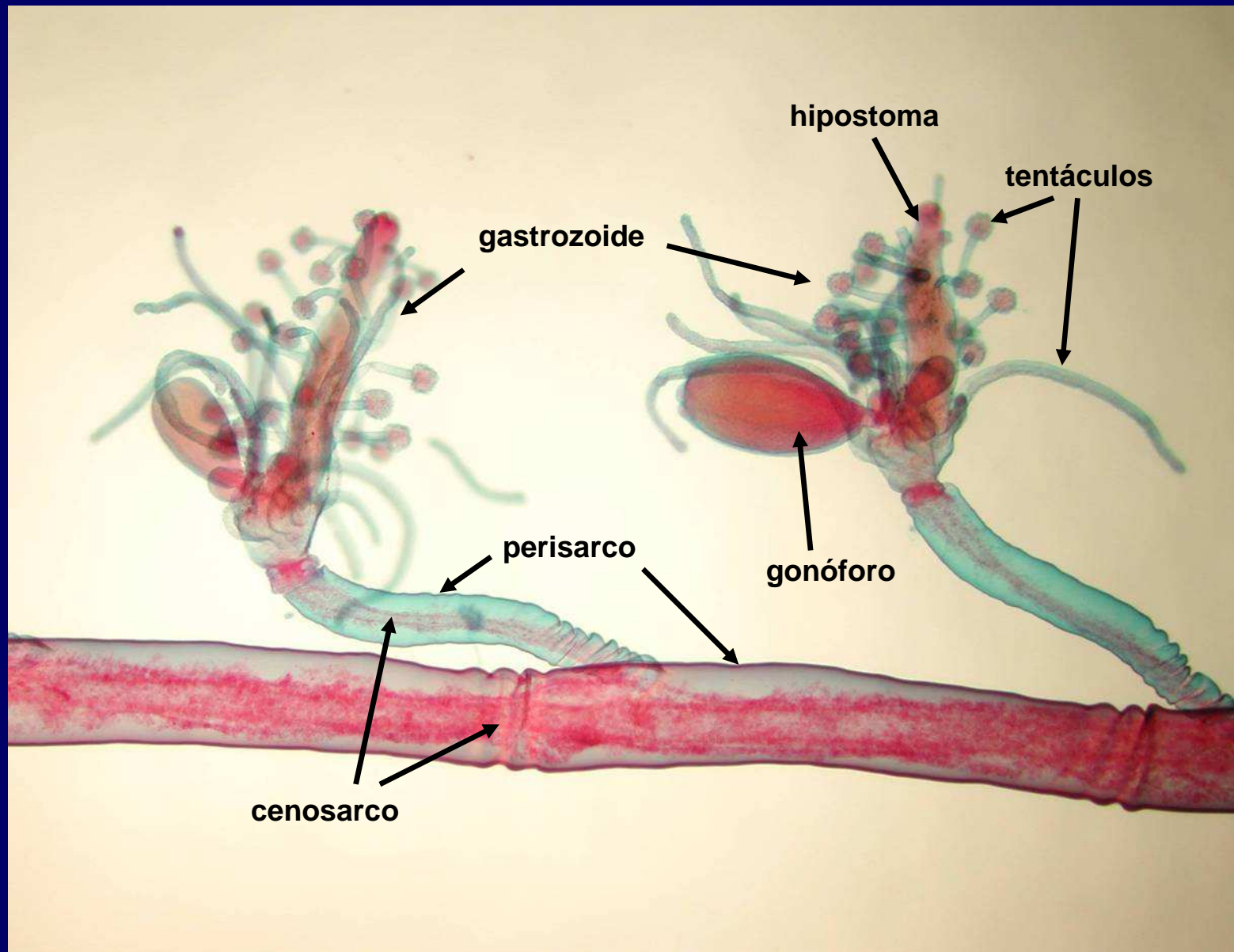
Canal radial

Canal anular

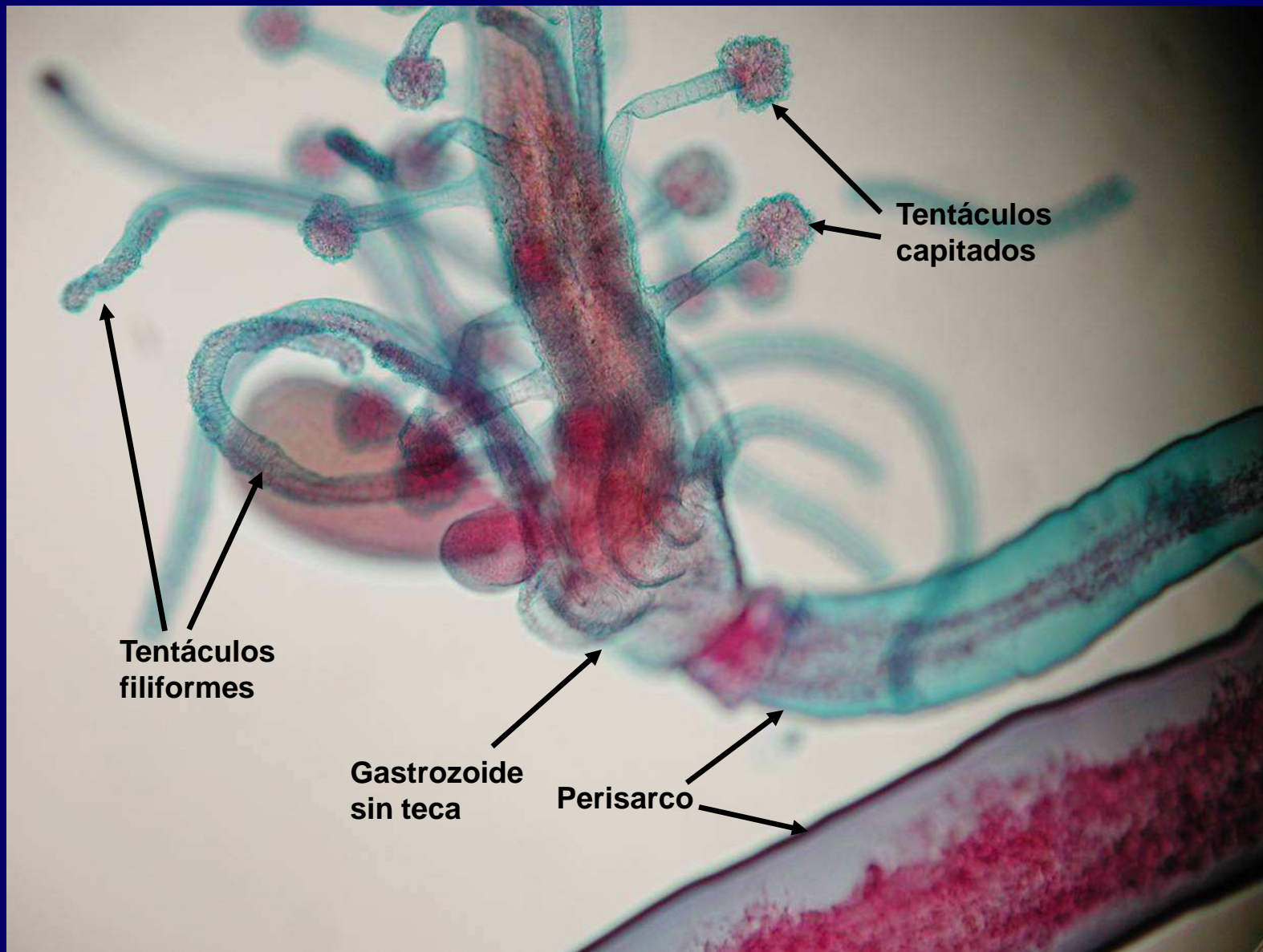
Obelia sp. Forma medusa



Obelia sp. Forma medusa

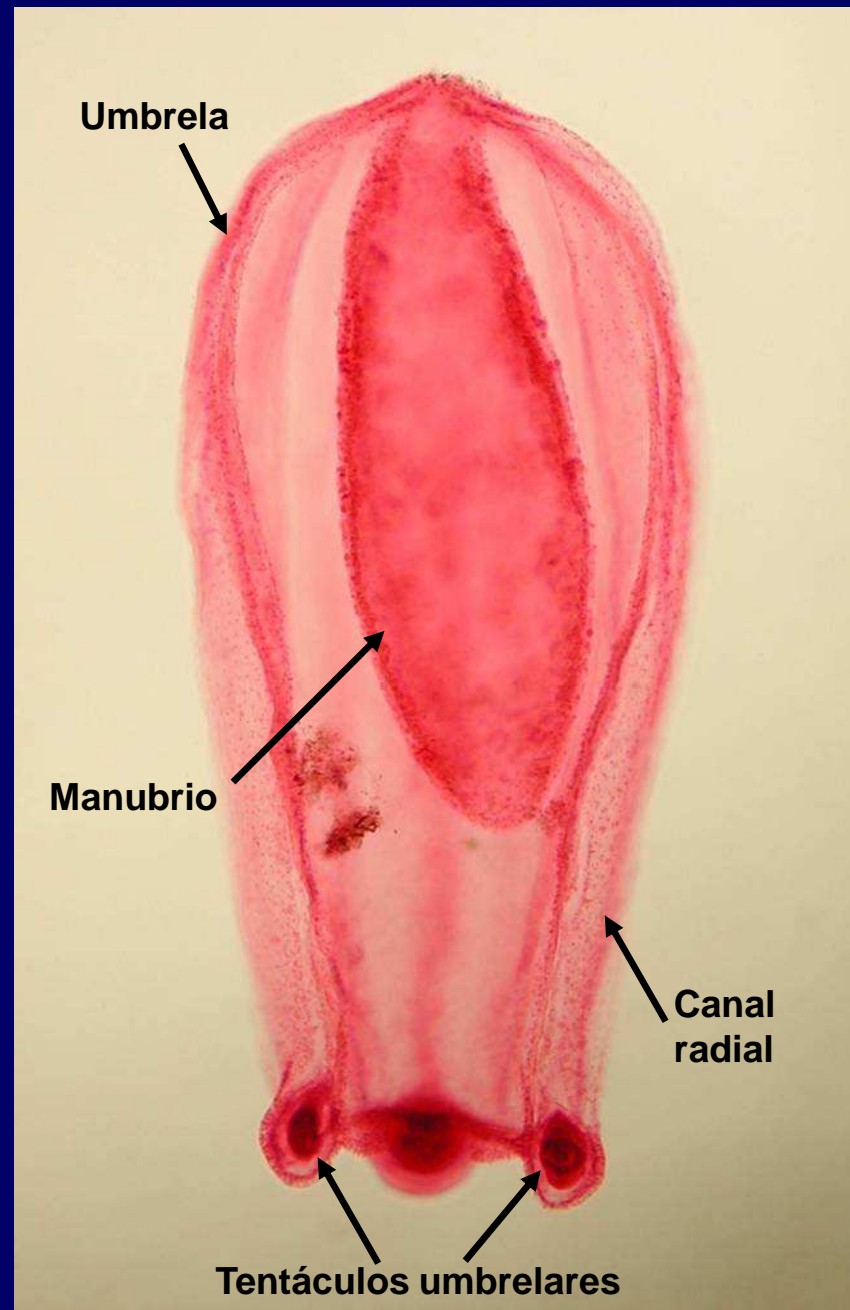


Pennaria sp. Forma pólipo

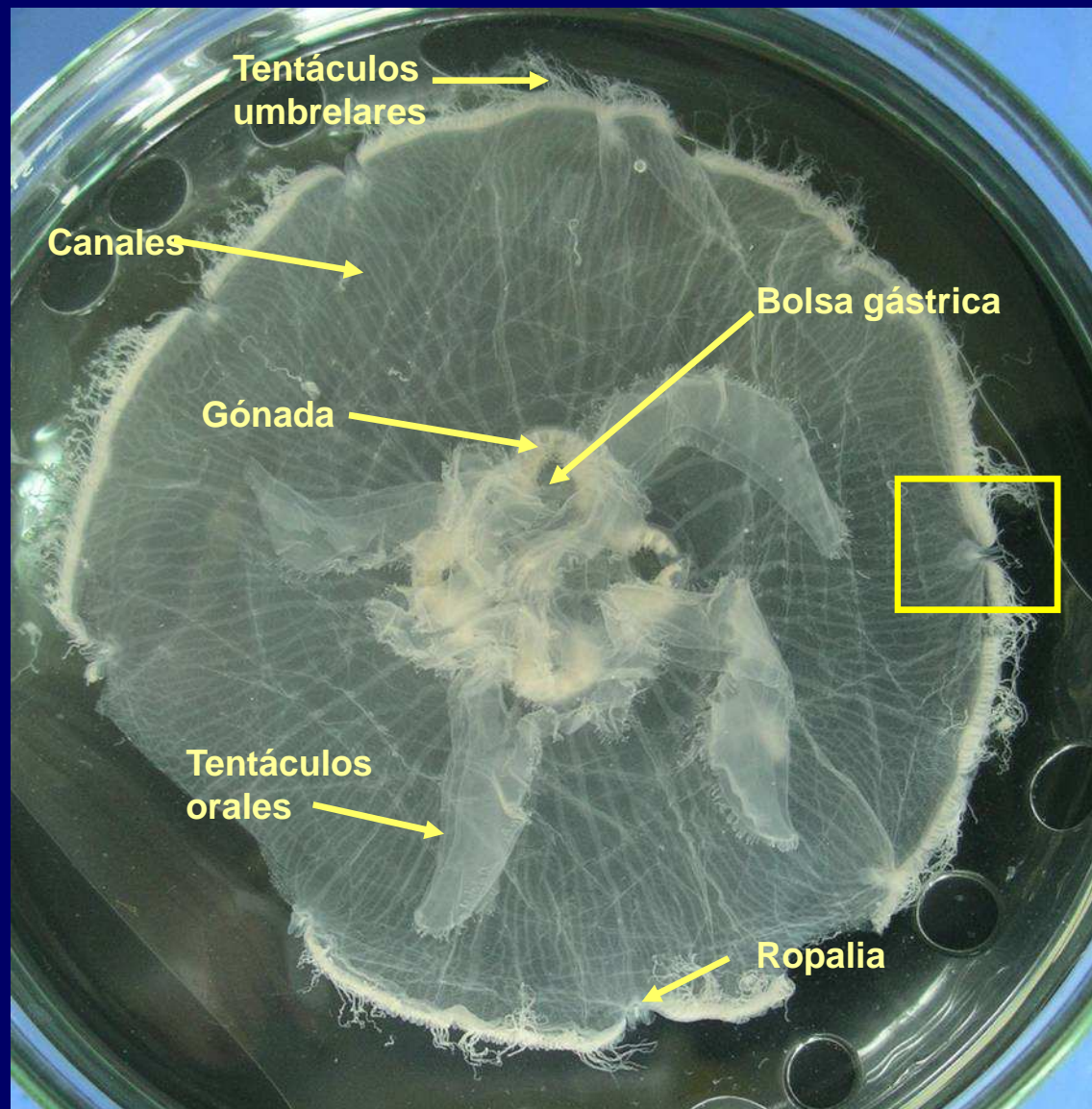


Pennaria sp. Detalle

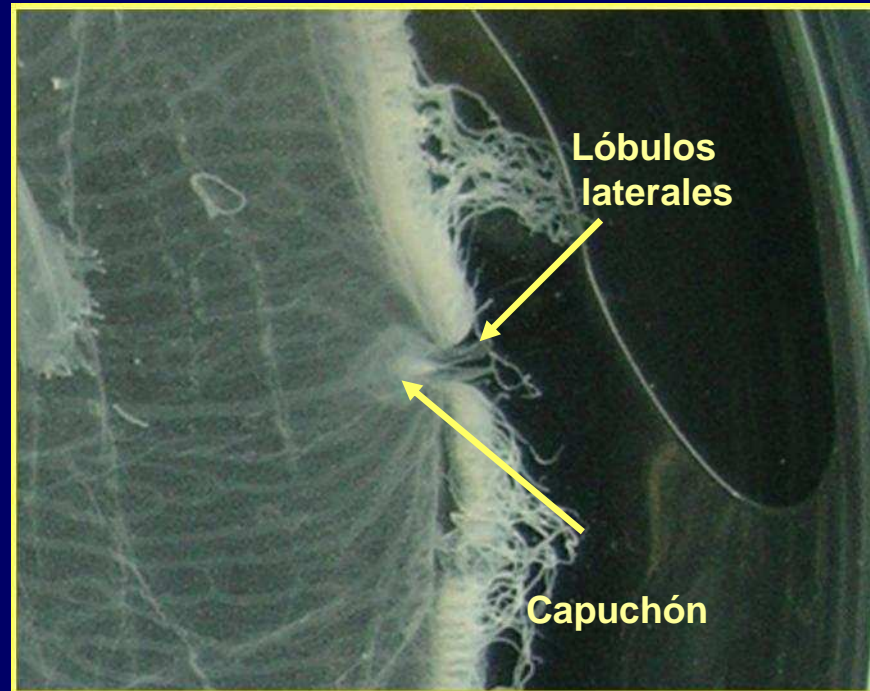
Pennaria sp. Forma medusa

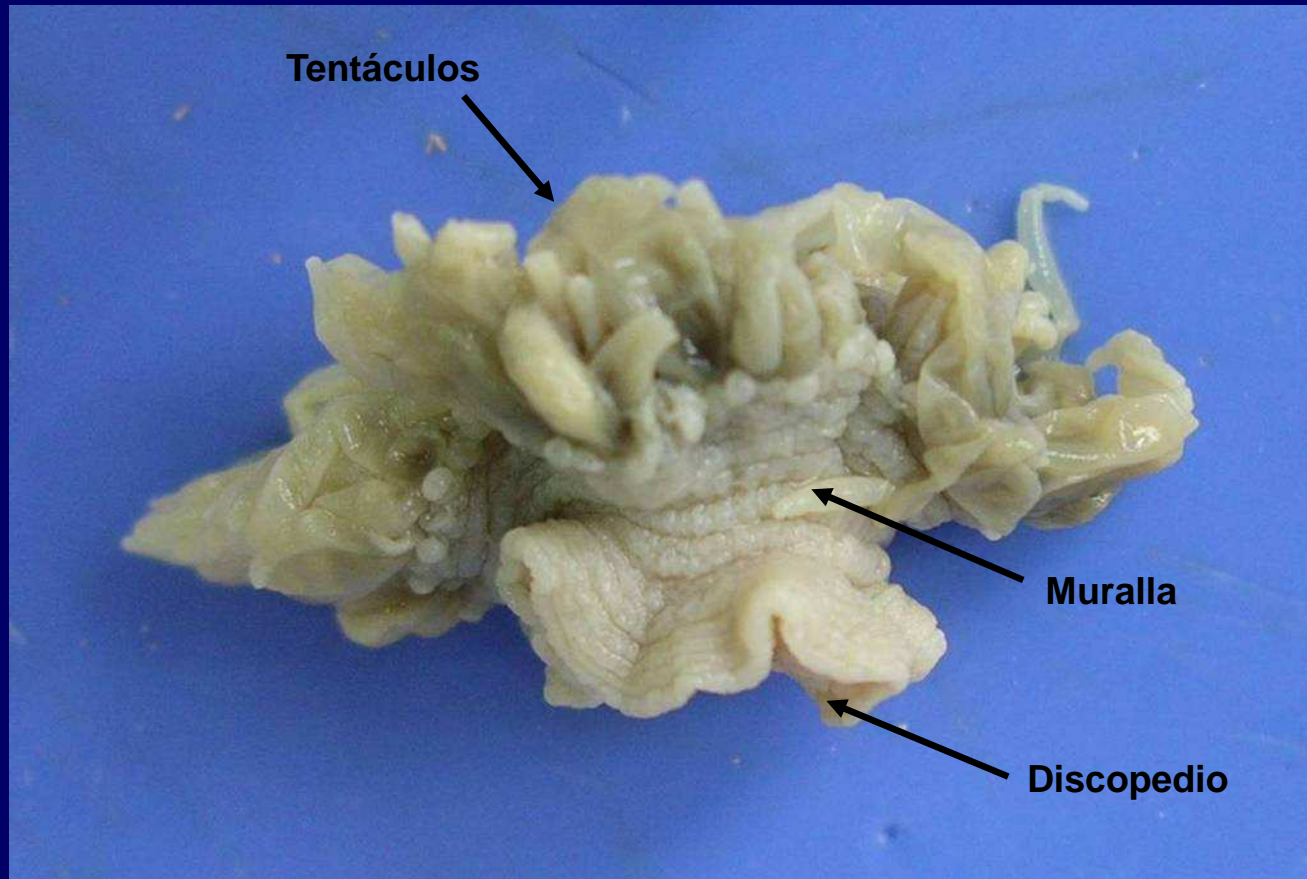


Aurelia aurita



Aurelia aurita.
Ropalia





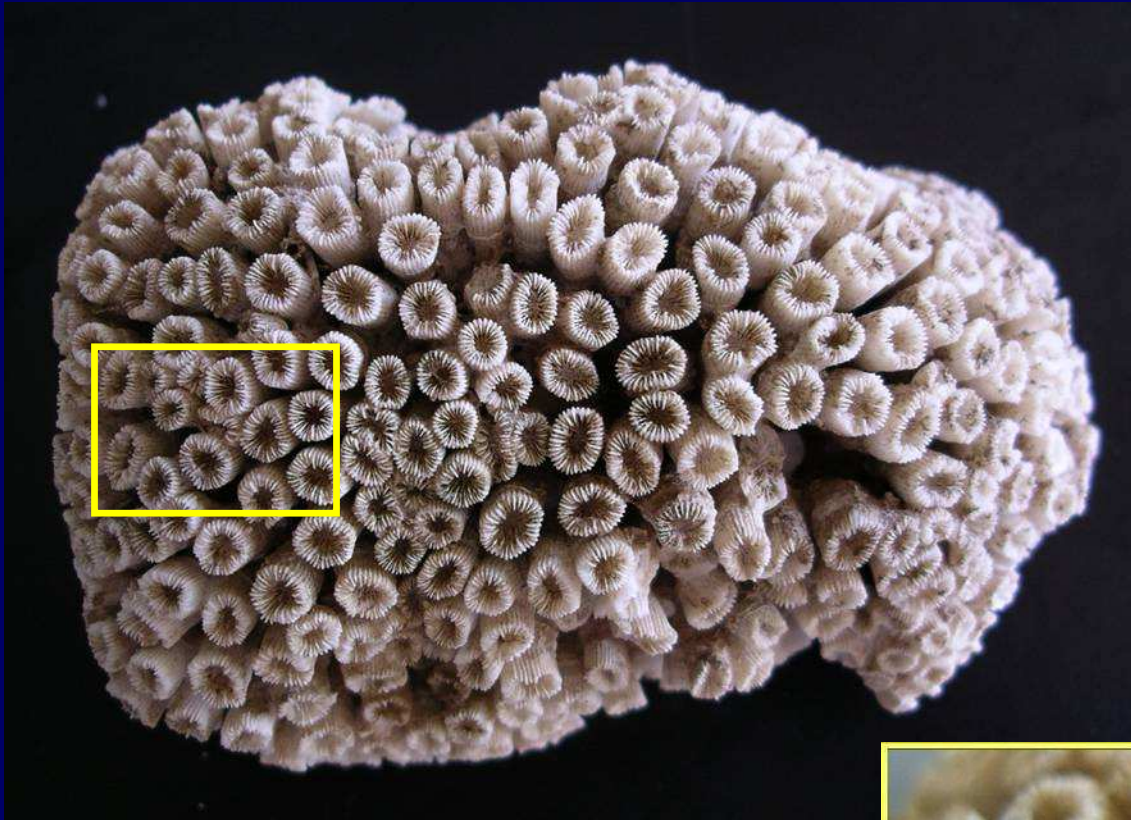
Anemonia sp. Vista lateral

Fungia sp.

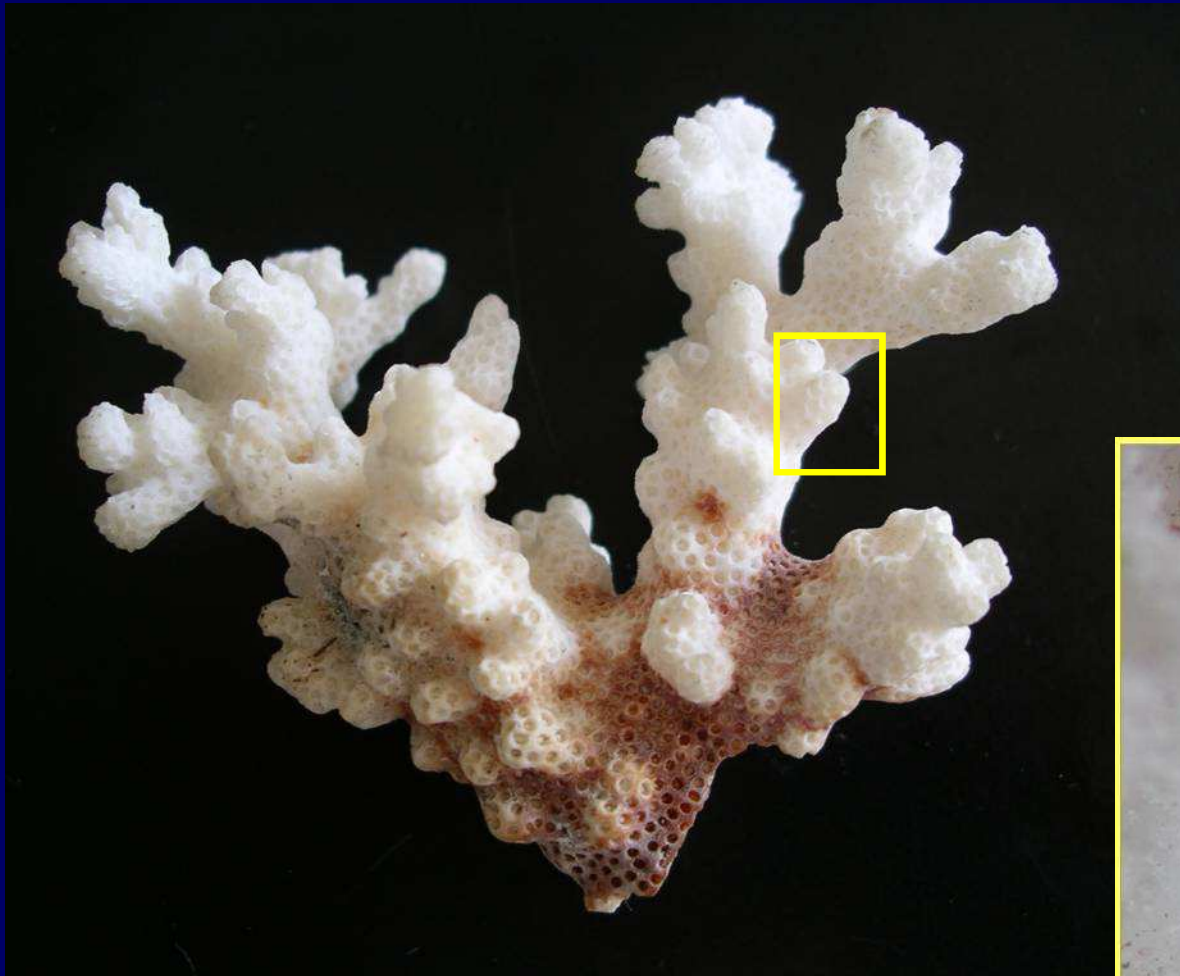




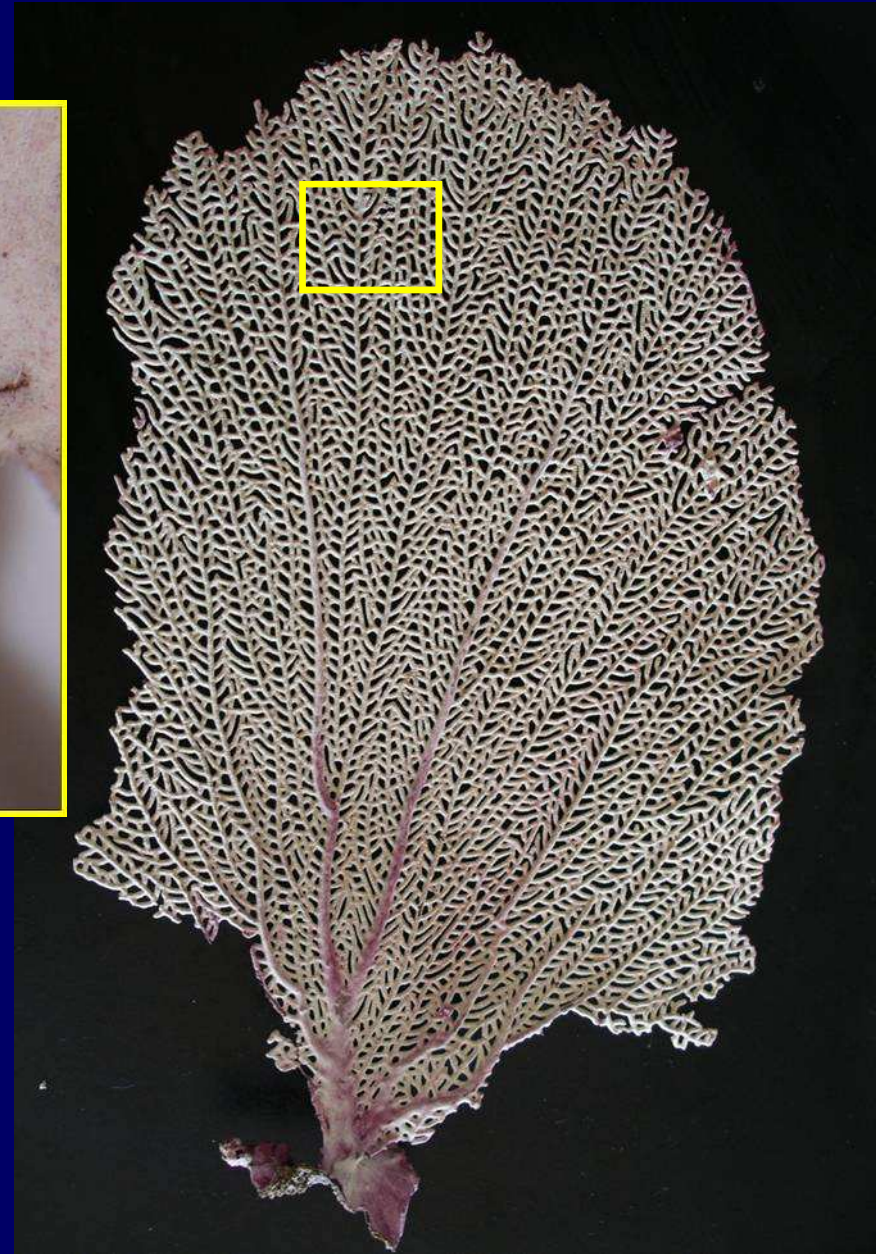
Balanophyllia sp.



Cladocora cespitosa



Acropora sp.



Gorgonia sp.

Alcyonium sp.

