

**OCW INA 2008**

**SESIÓN PRÁCTICA 3**

**Diversidad estructural de ACELOMADOS (Platelmintos)  
y PSEUDOCOLOMADOS (Nemátodos)**

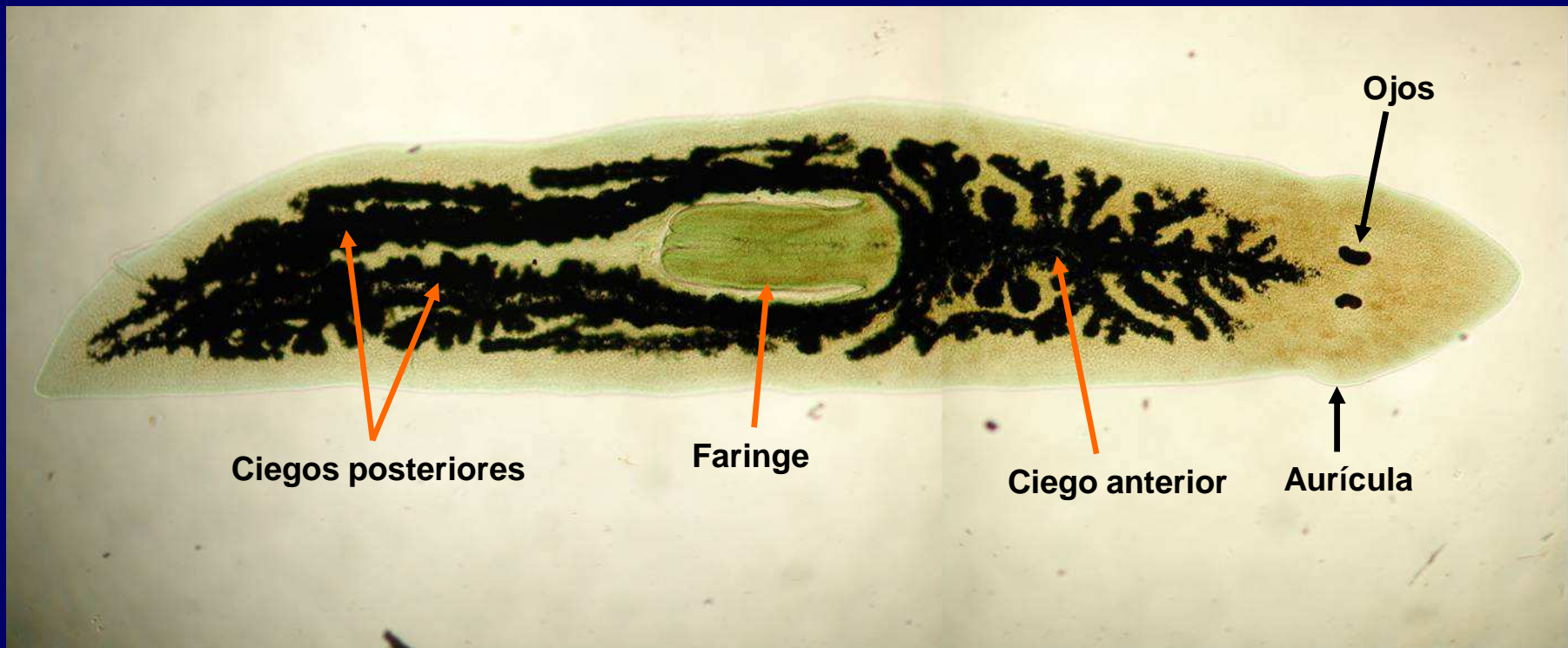
Fuente original:

Práctica 4

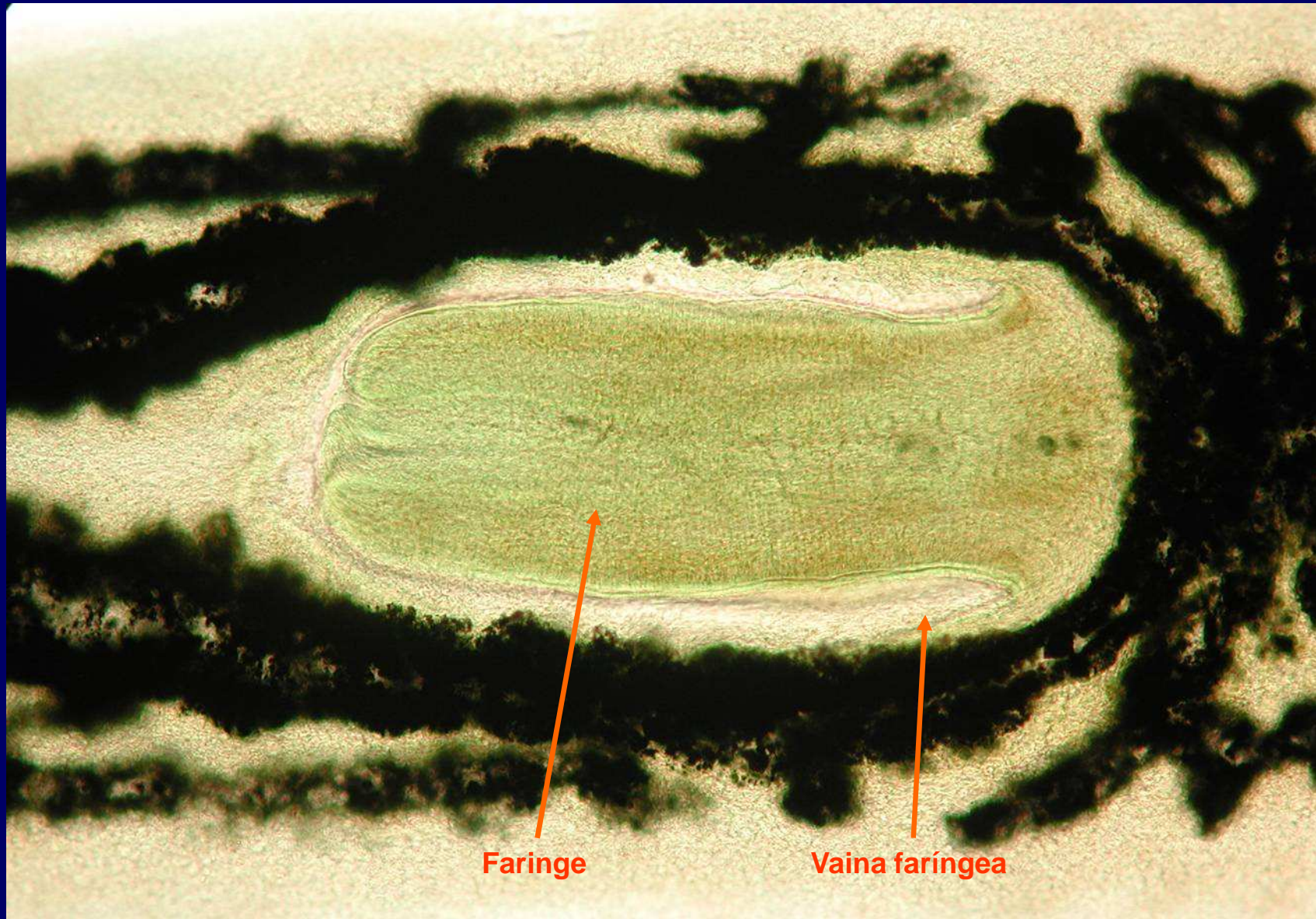
Estudio morfoanatómico de Platelmintos y Nemátodos

(Guía visual de las Prácticas de Zoología)

MD García, MI Arnaldos y JJ Presa

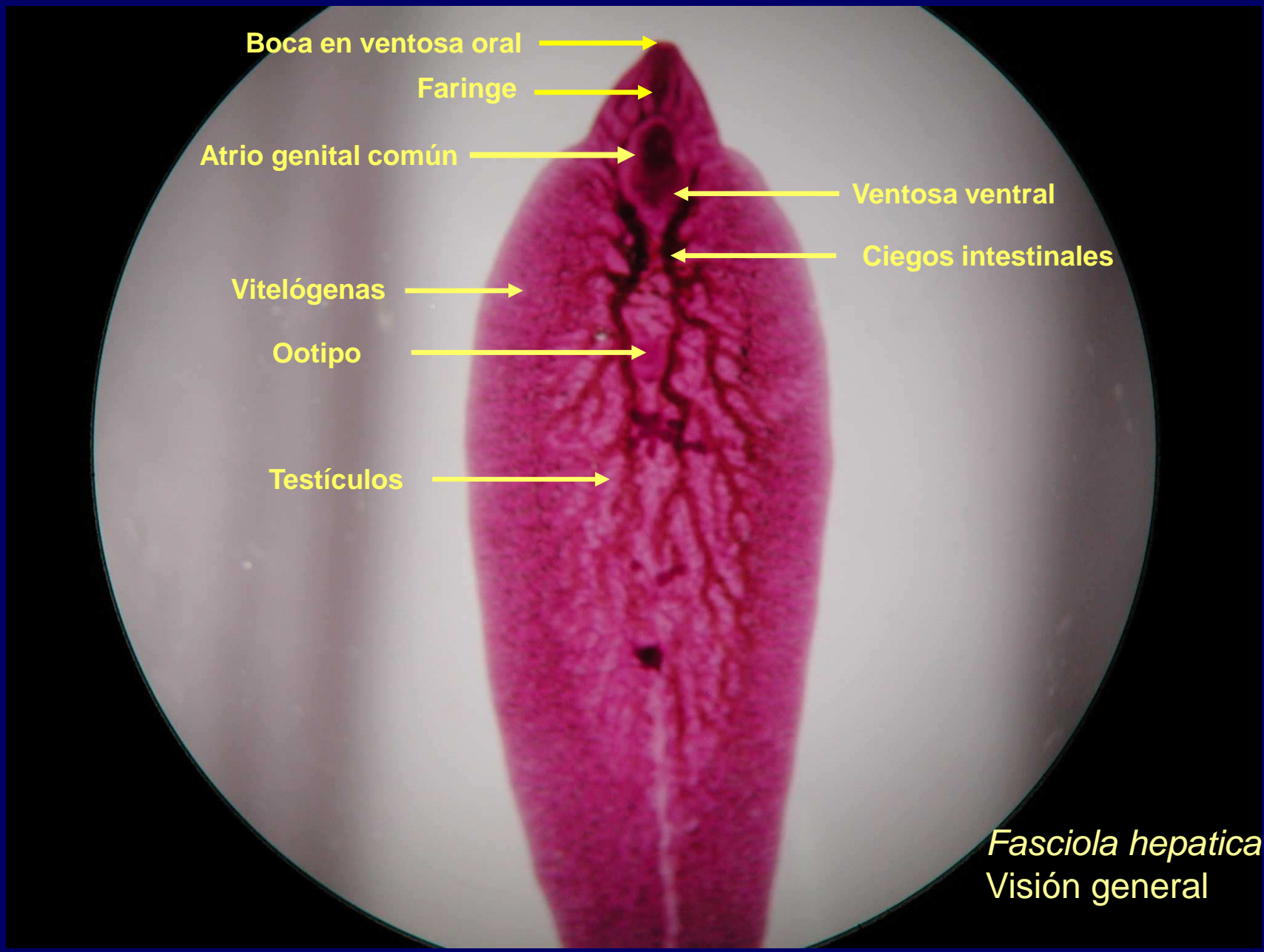


Planaria de agua dulce



Planaria de agua dulce. Detalle de la faringe





Boca en ventosa oral

Faringe

Atrio genital común

Ventosa ventral

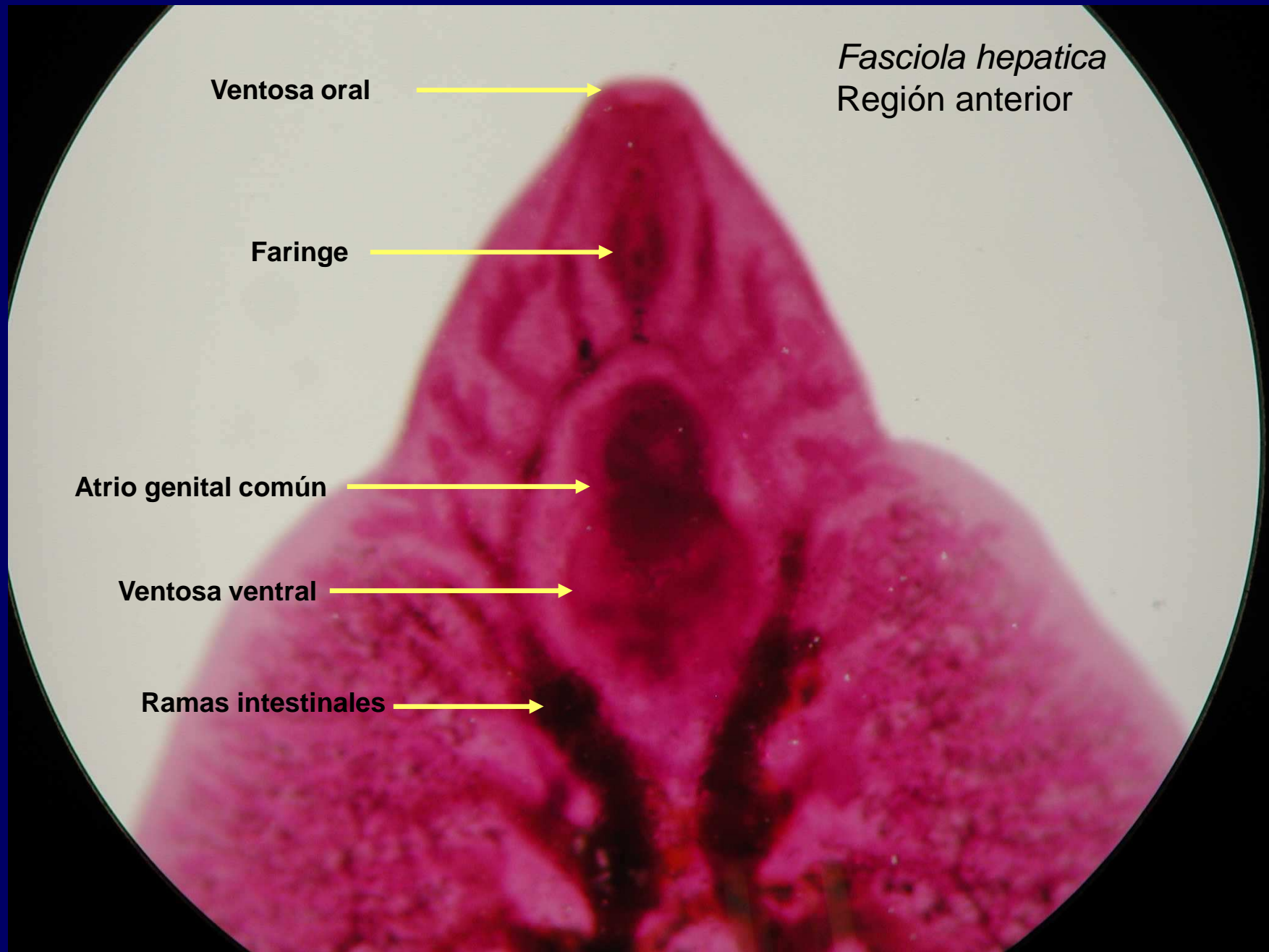
Ciegos intestinales

Vitelógenas

Ootipo

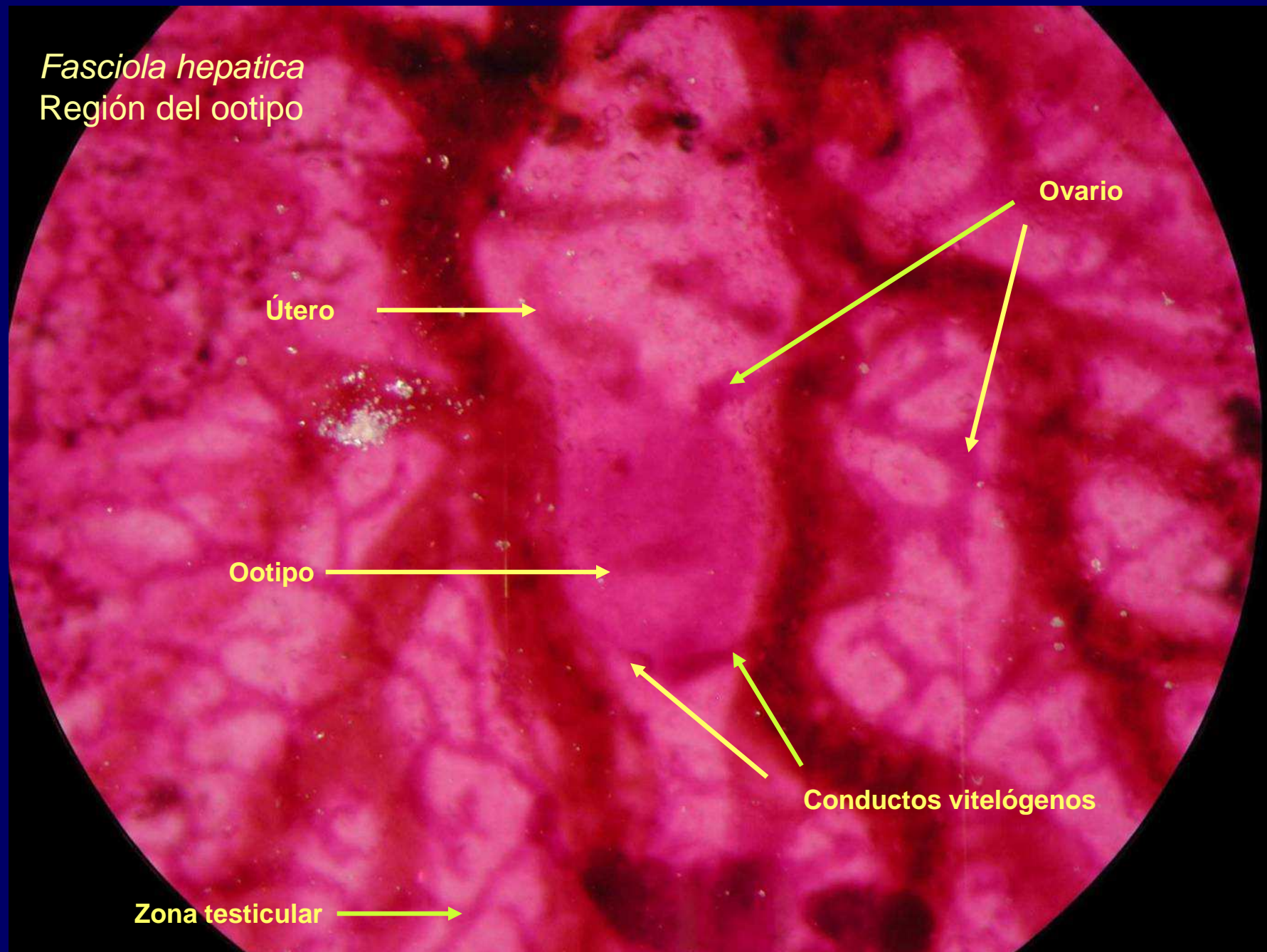
Testículos

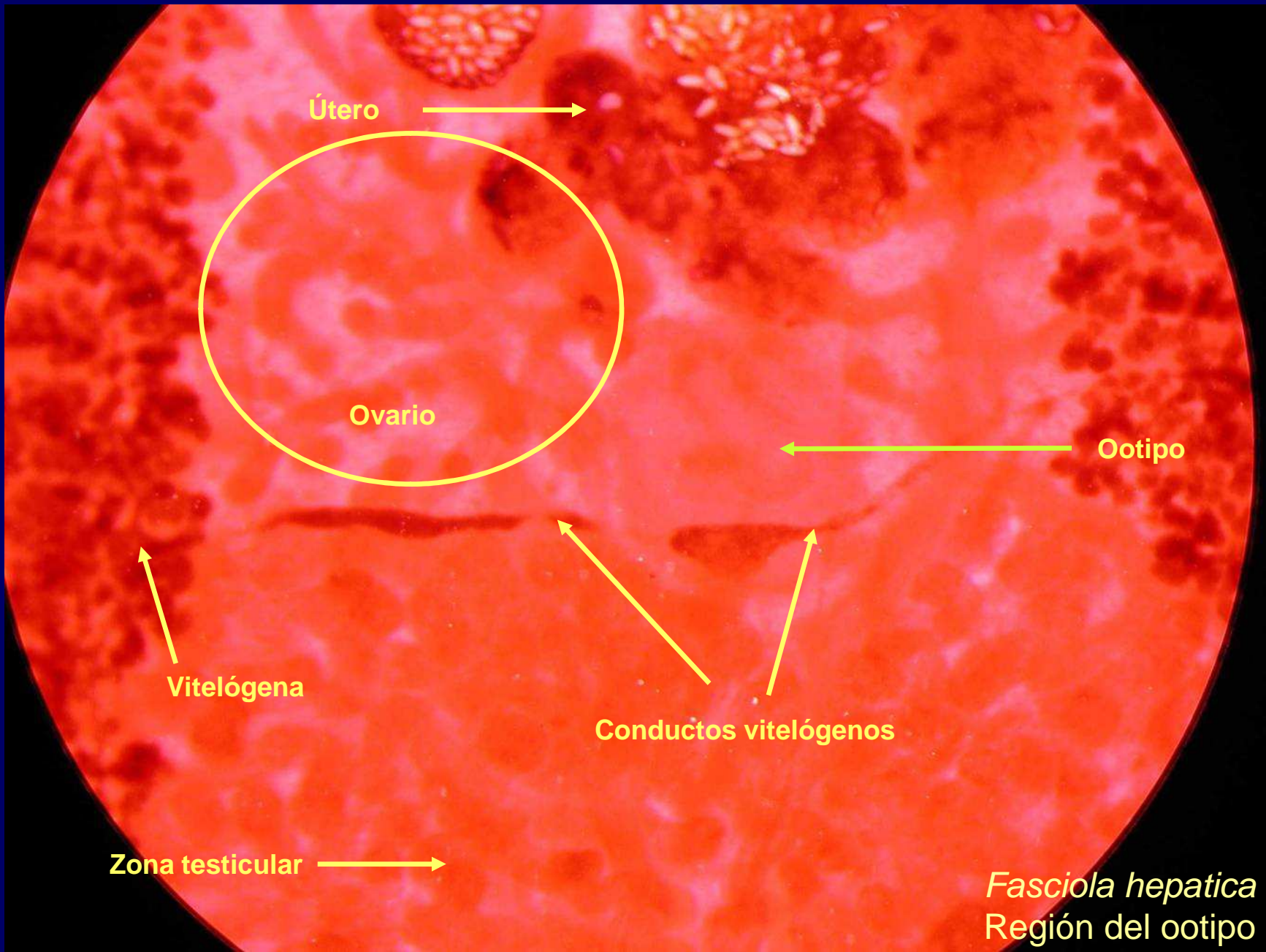
*Fasciola hepatica*  
Visión general





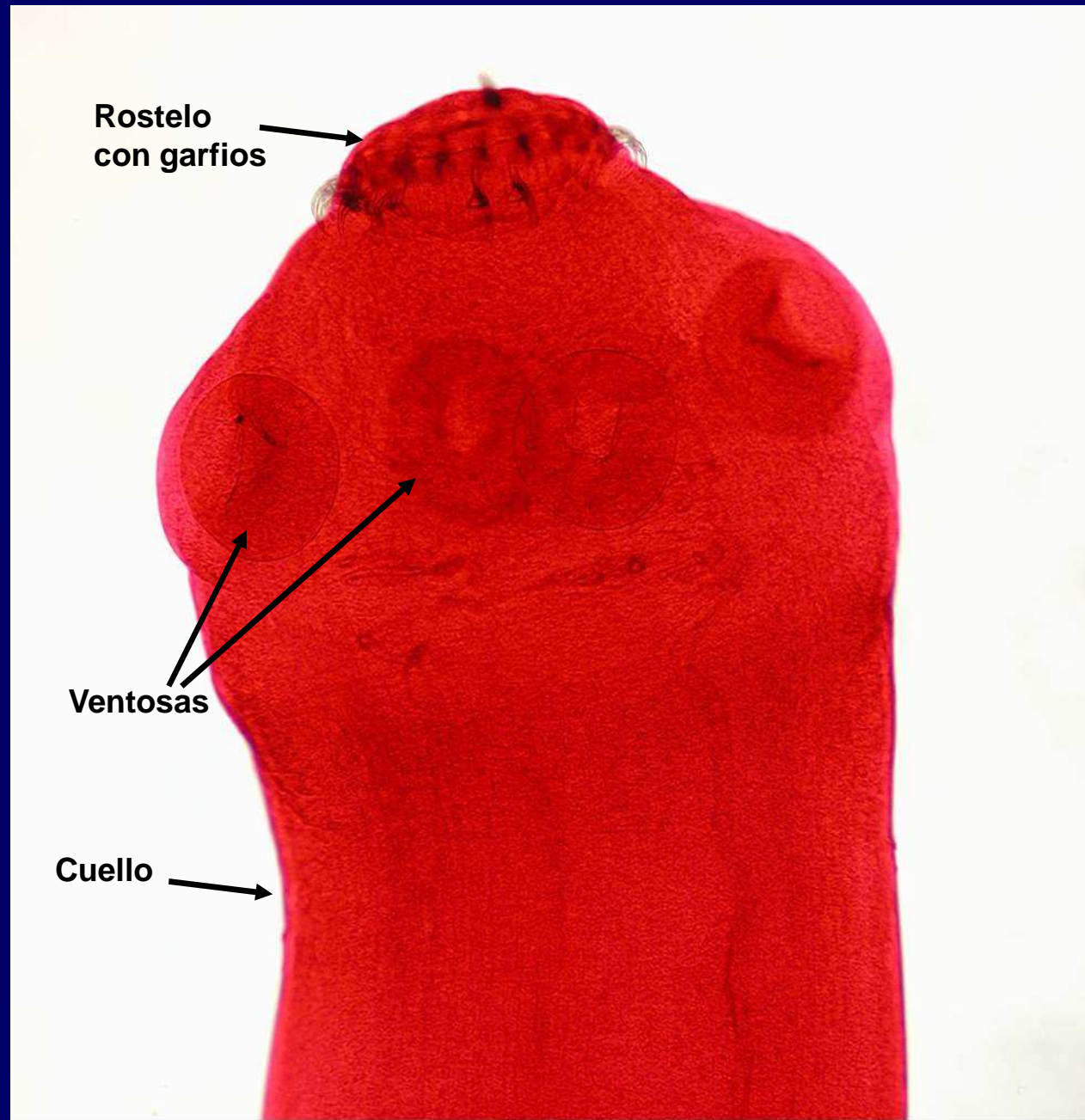
*Fasciola hepatica*  
Región del ootipo



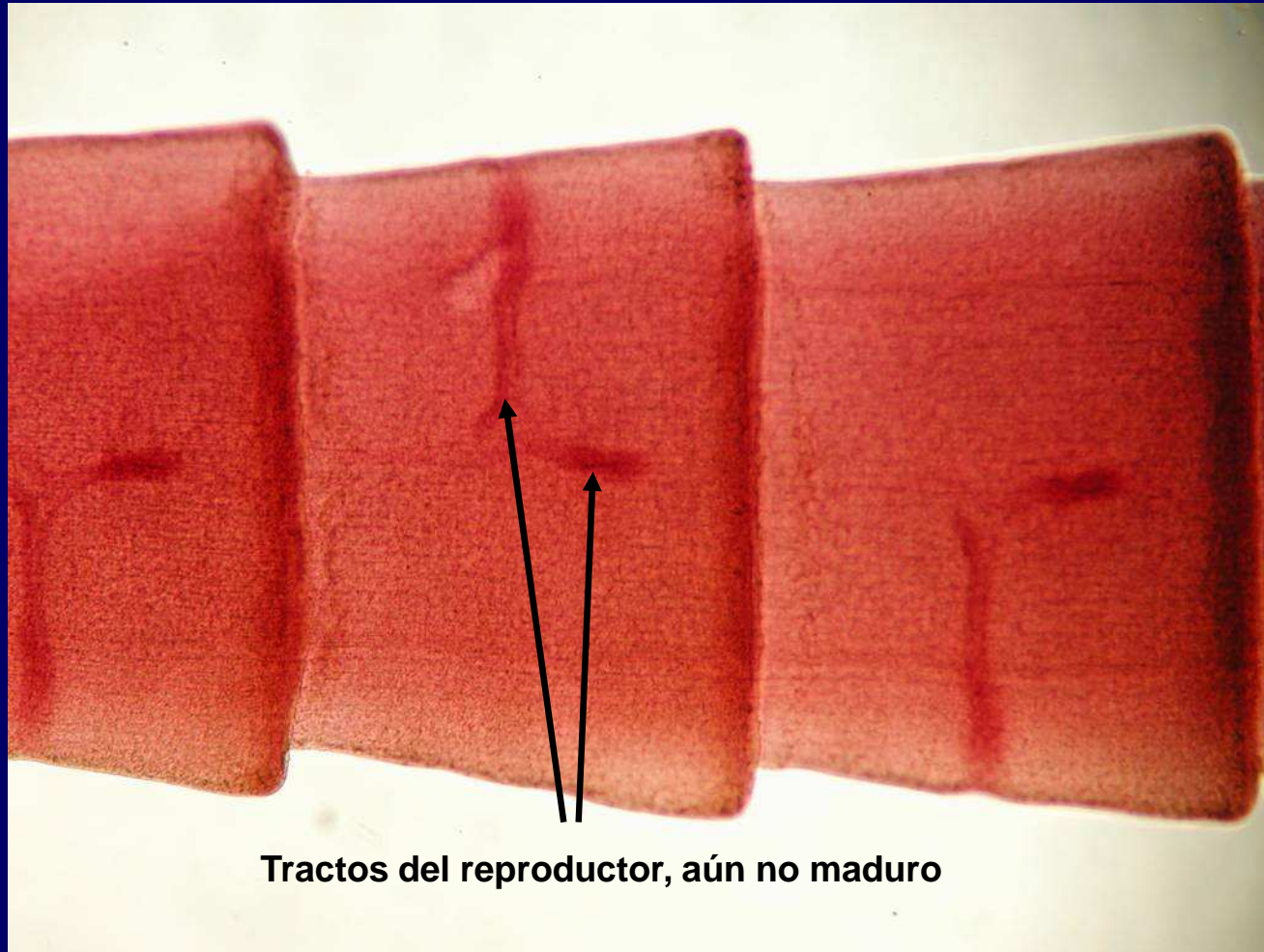




*Taenia* sp.  
Escólex

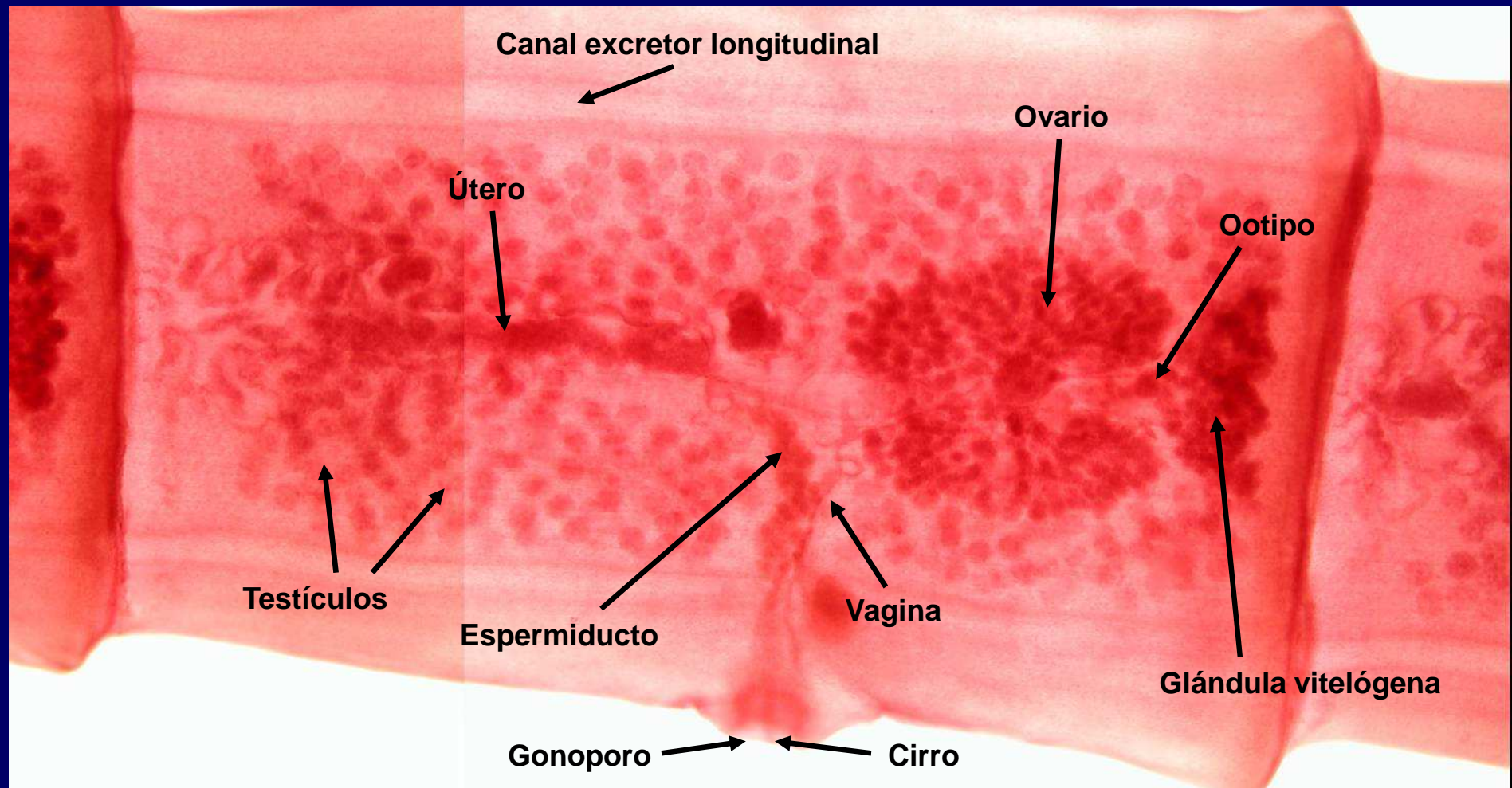






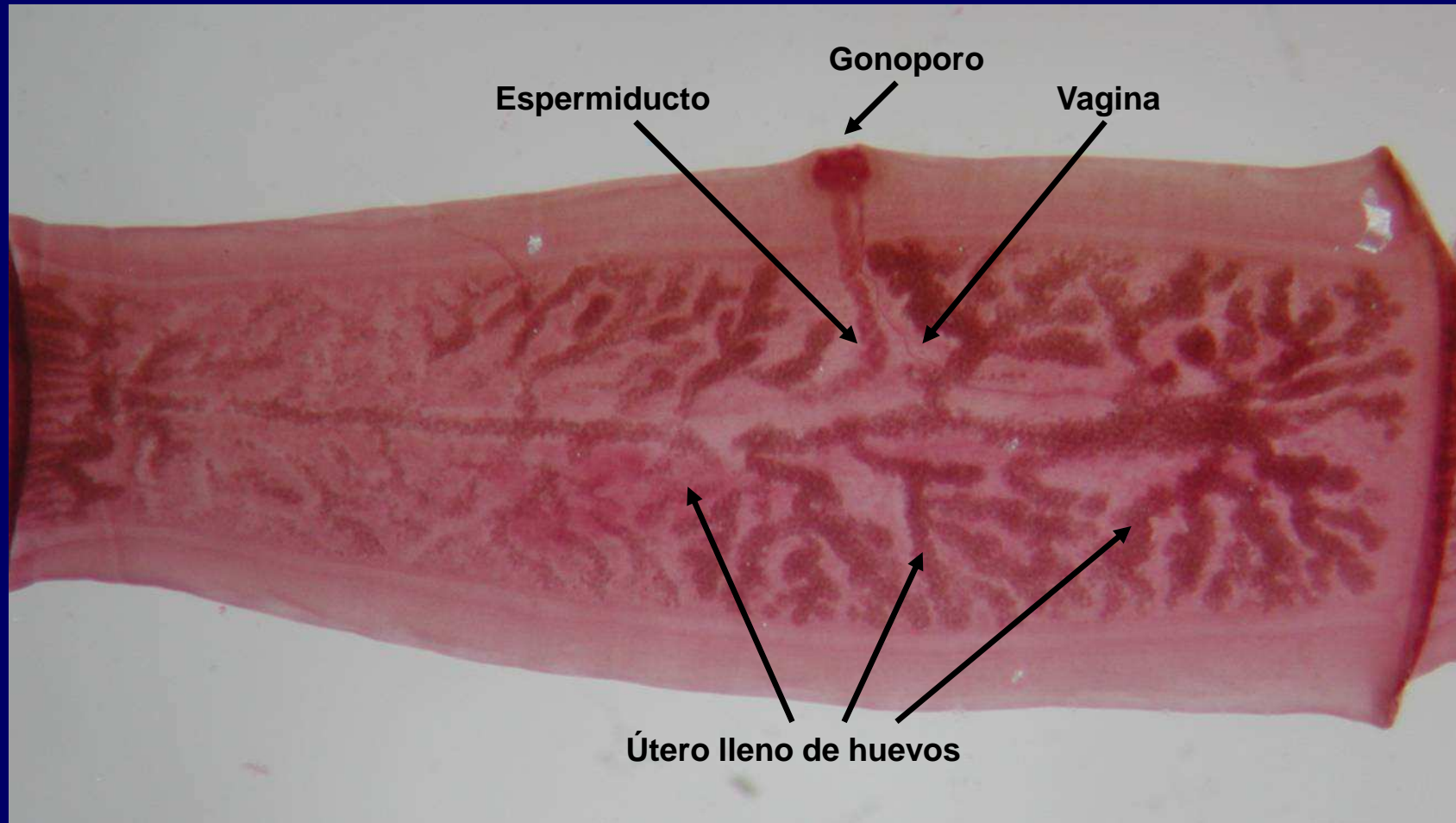
**Tractos del reproductor, aún no maduro**

*Taenia* sp. Proglótides jóvenes

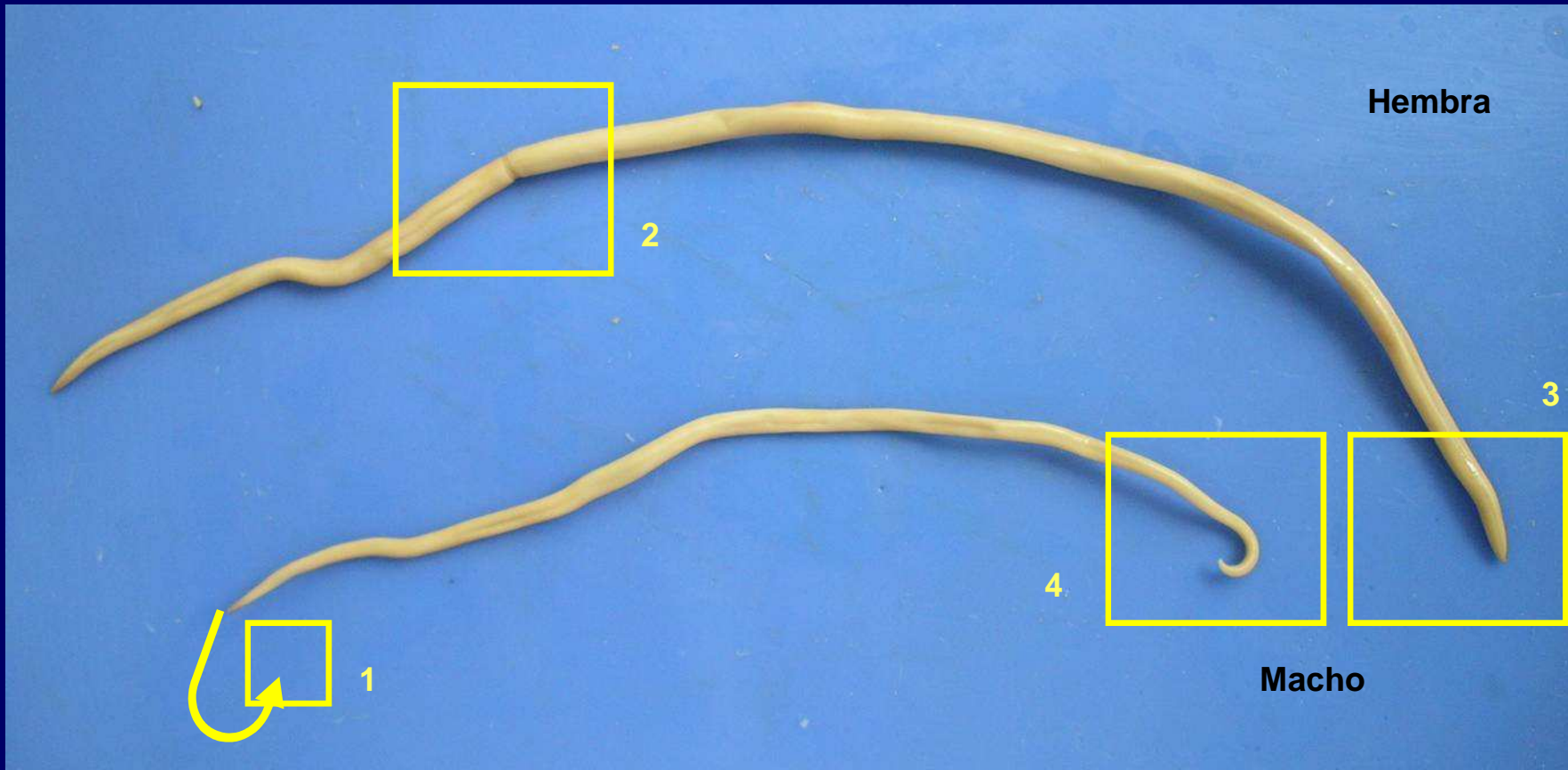


*Taenia* sp. Proglótide maduro





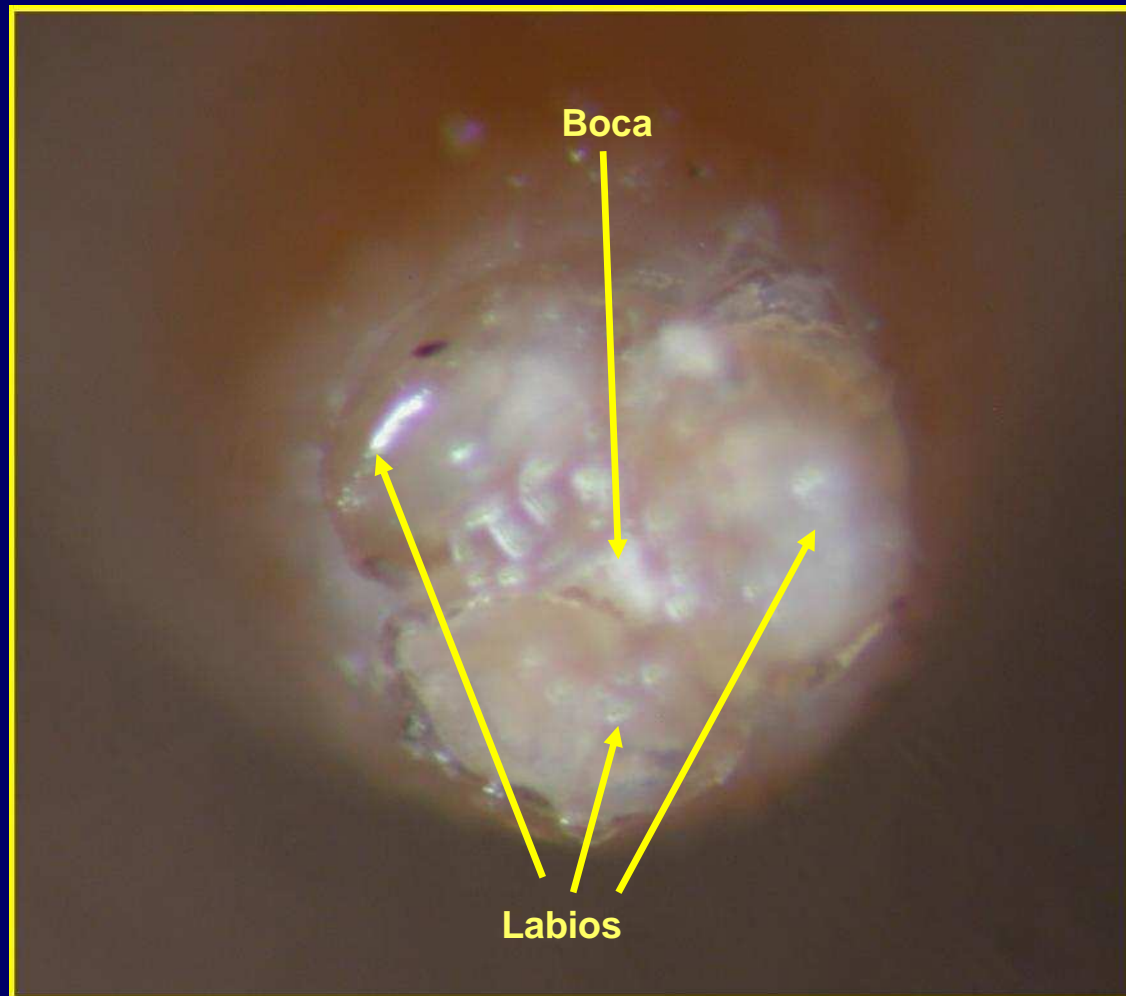
*Taenia* sp. Proglótide grávido

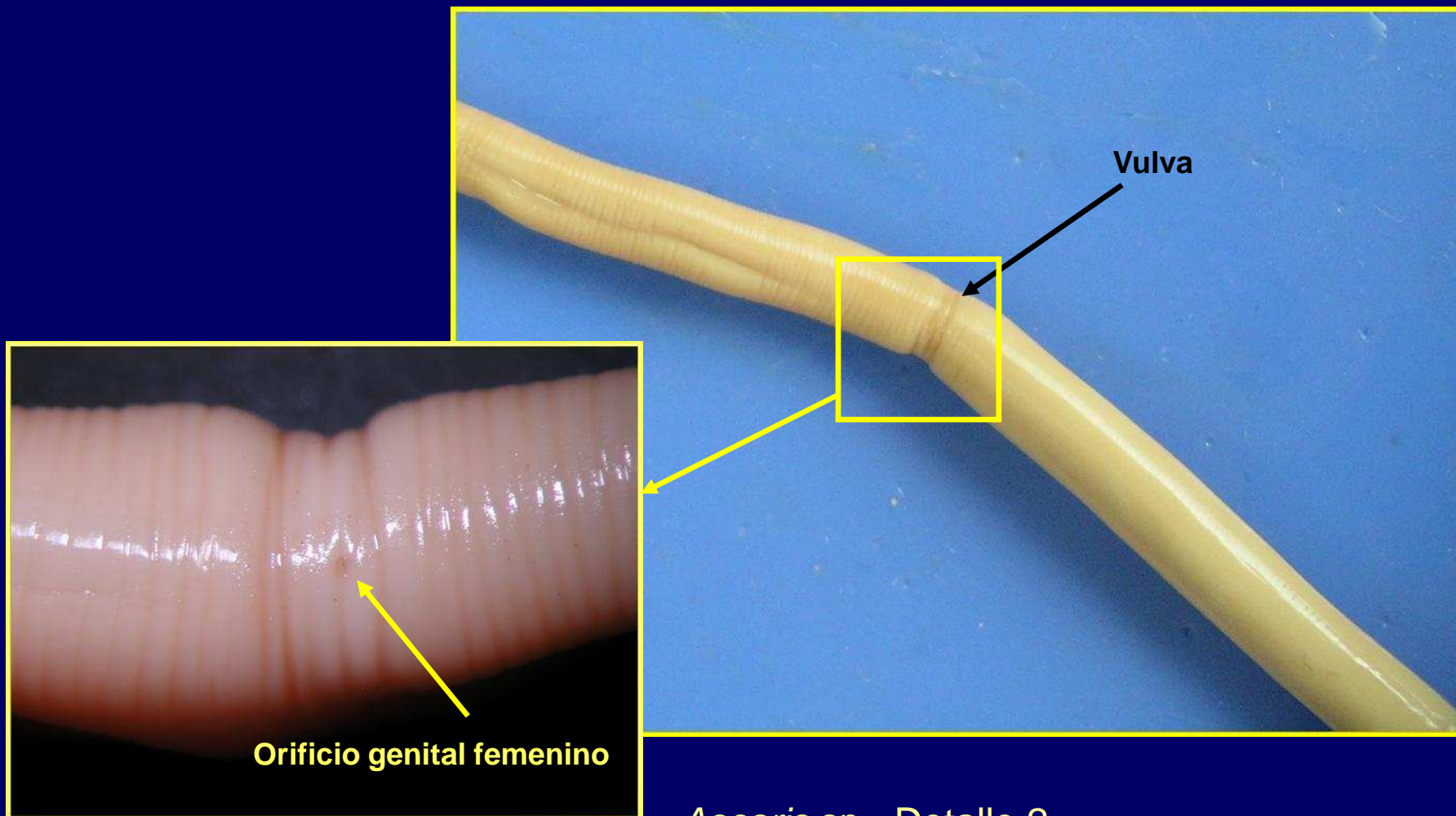


*Ascaris sp.*



*Ascaris* sp. Detalle 1

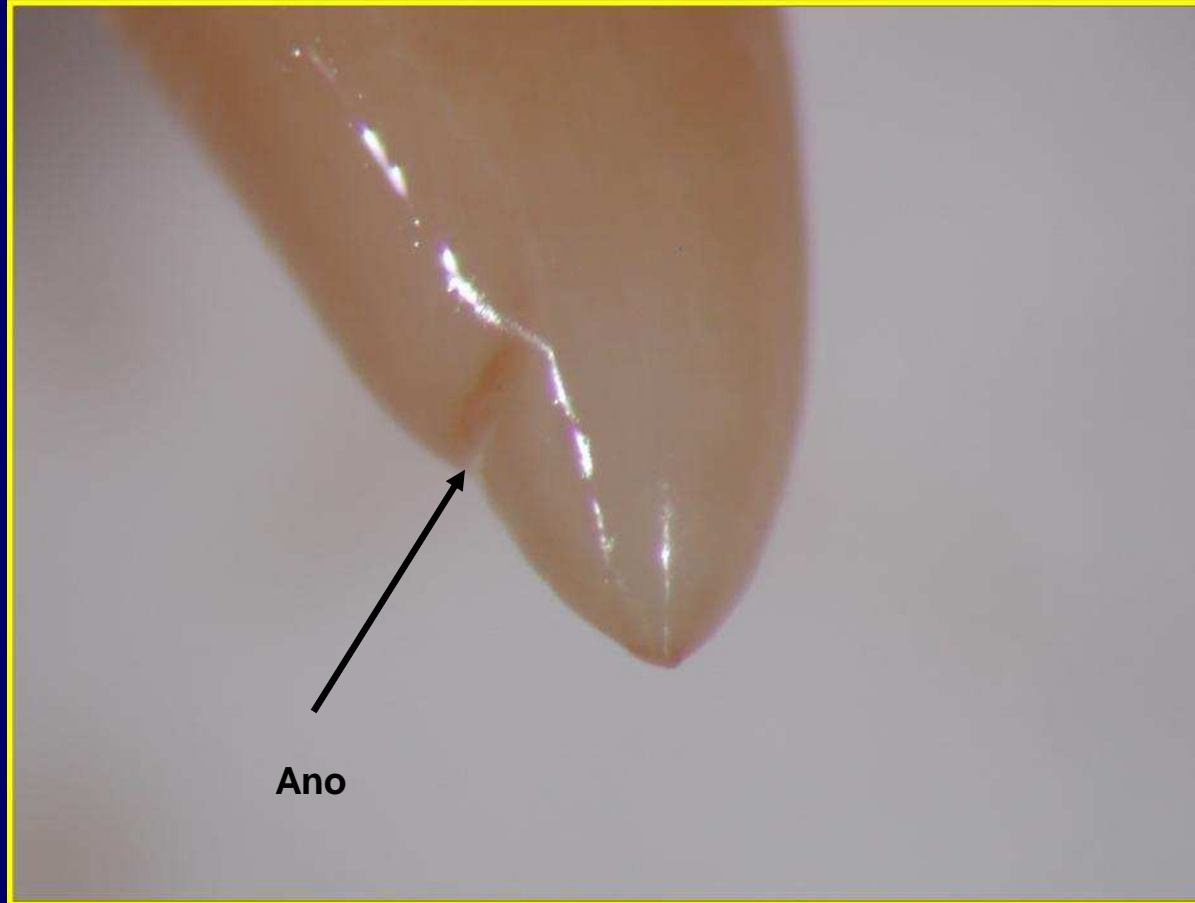




*Ascaris* sp. Detalle 2



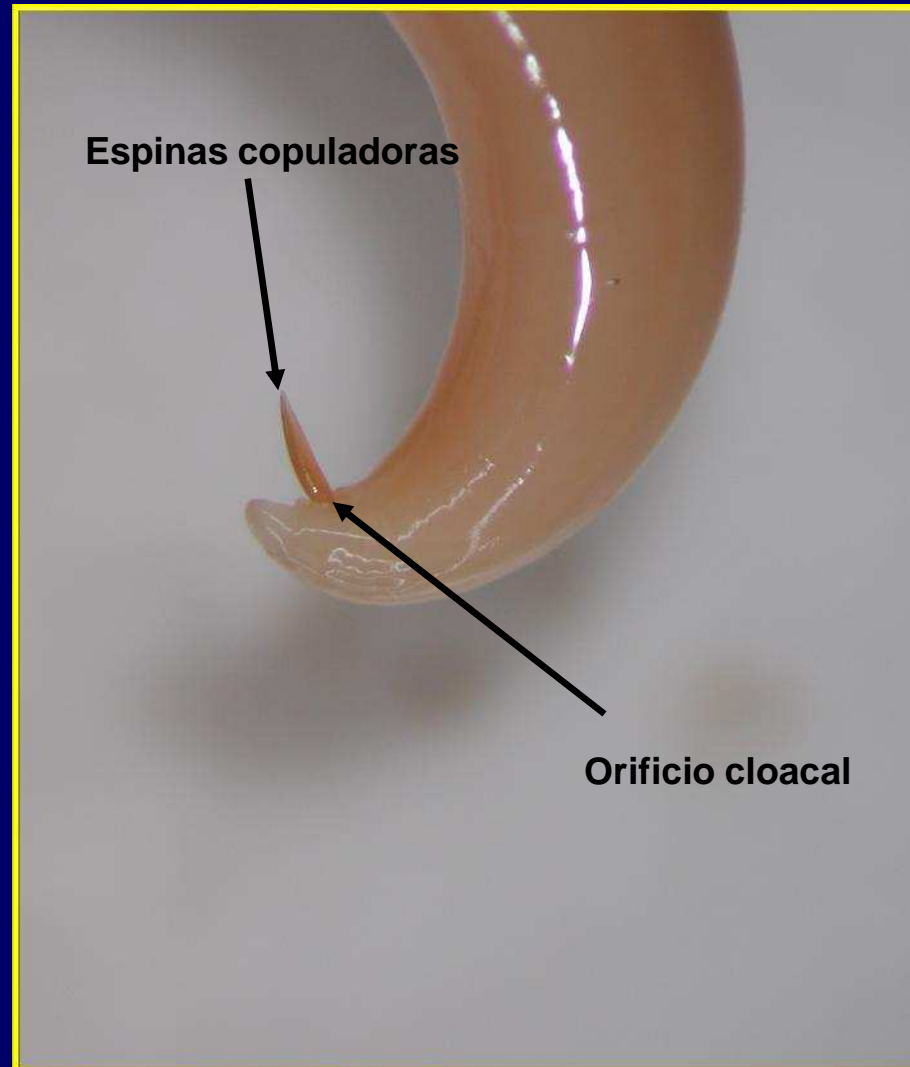




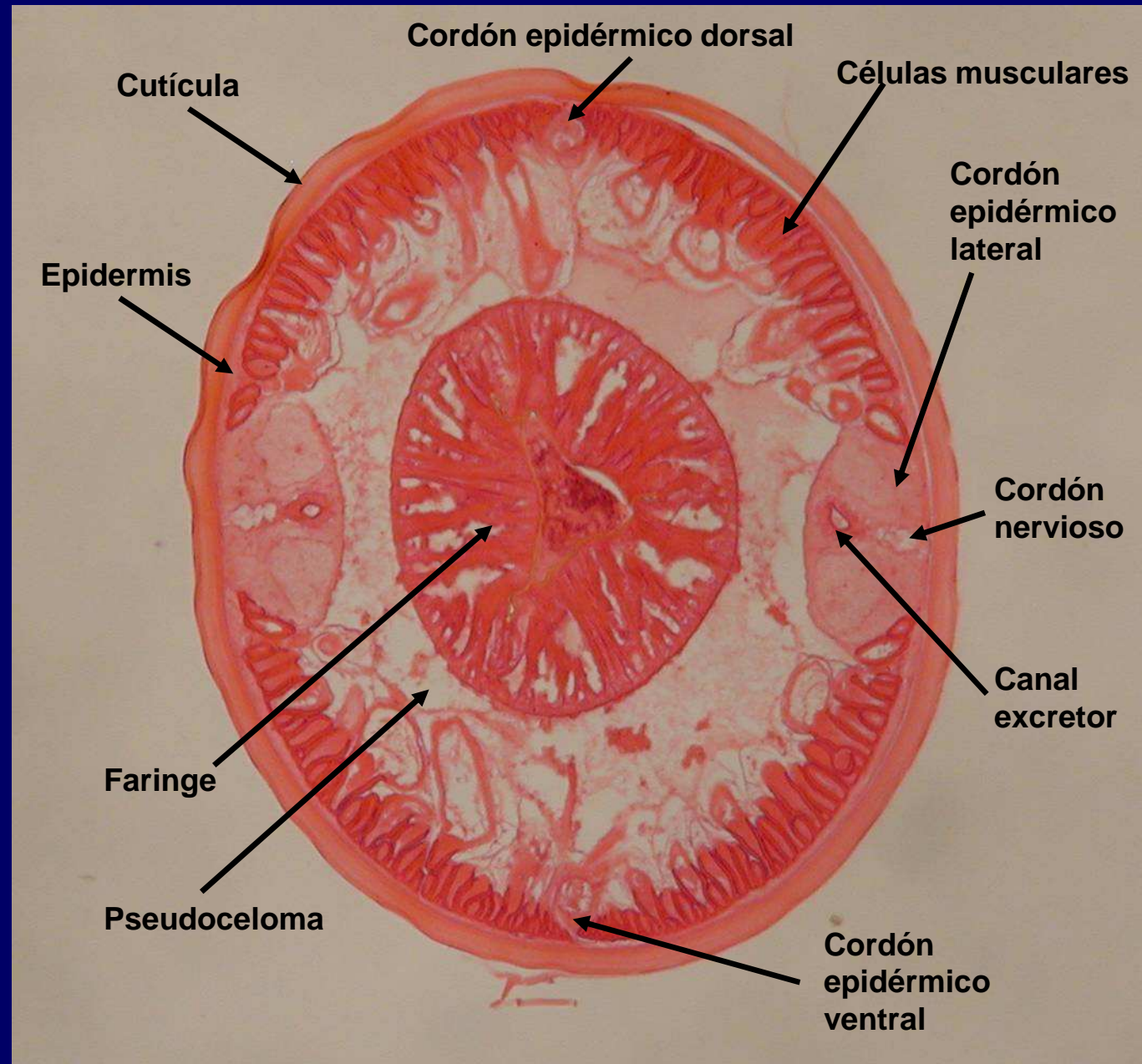
*Ascaris* sp. Detalle 3



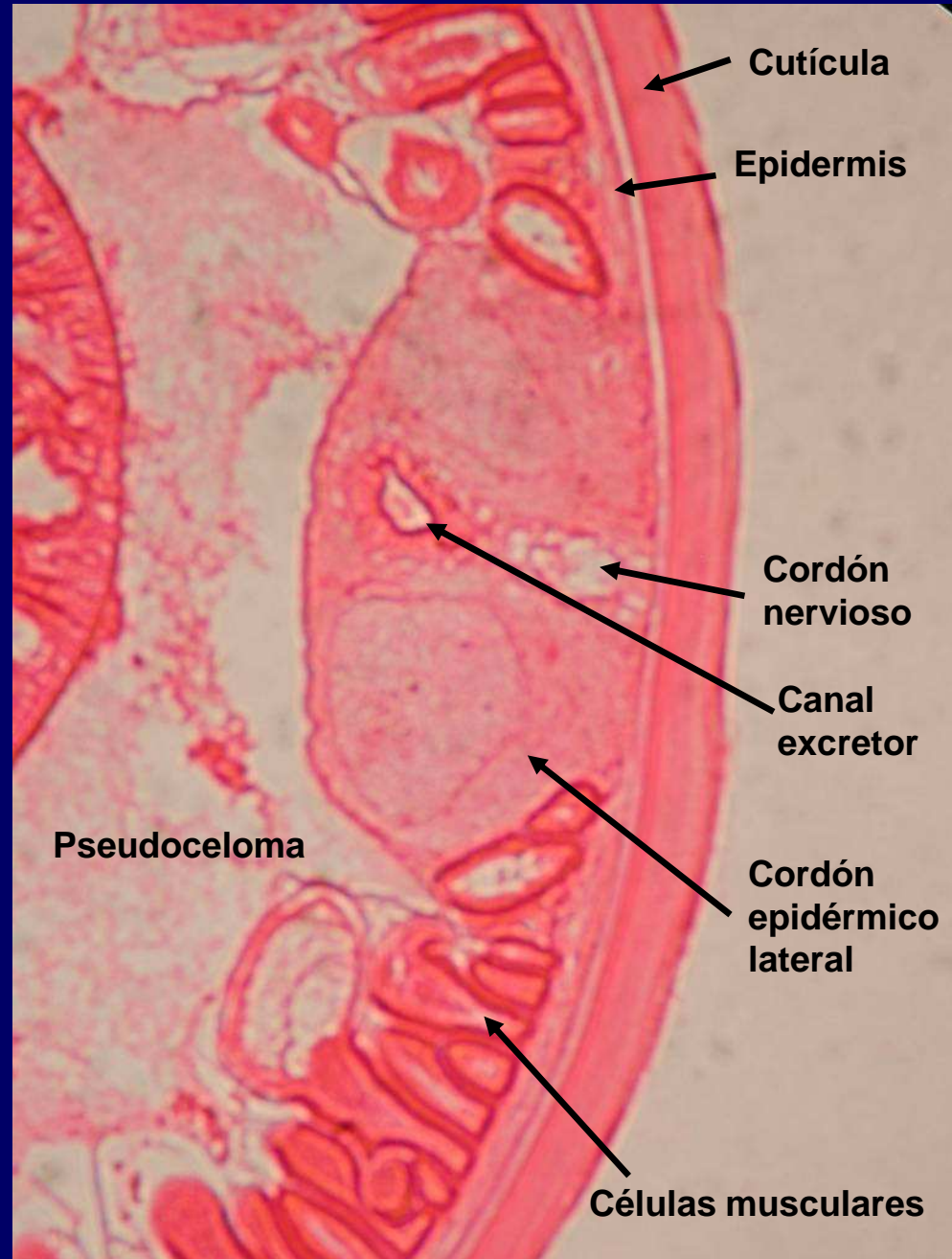
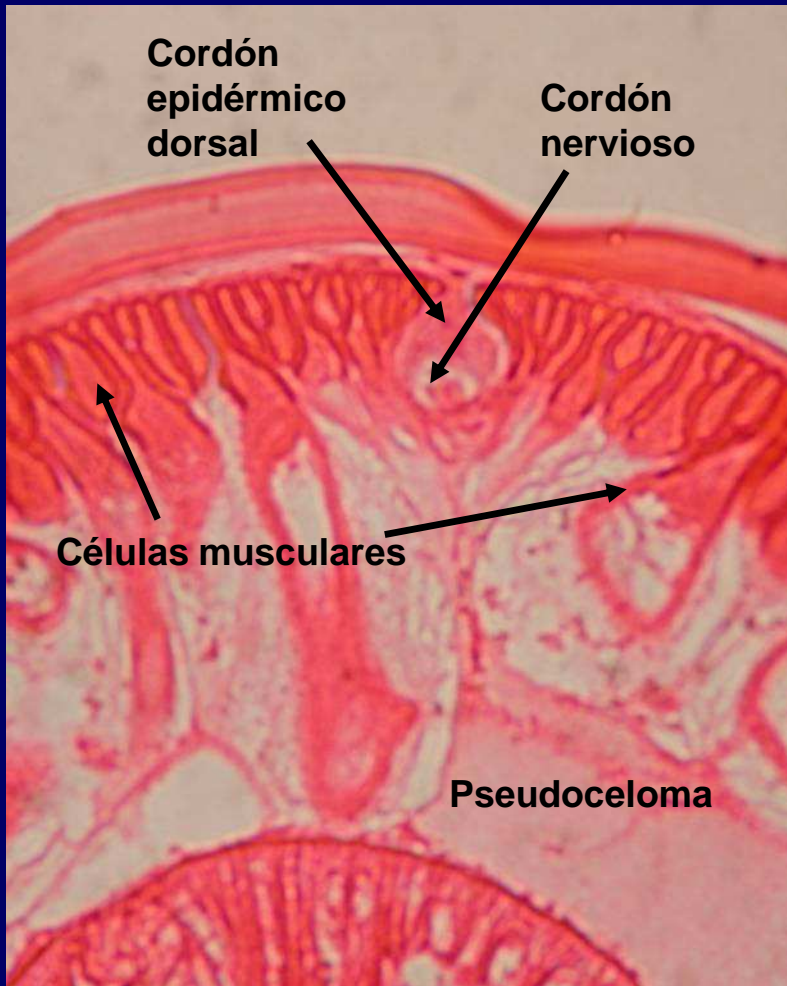
*Ascaris* sp. Detalle 4



*Ascaris* sp.  
Sección al nivel de la faringe







*Ascaris* sp.  
Detalle de cordones epidérmicos dorsal y lateral