

OCW INA 2008
SESIÓN PRÁCTICA 4
Diversidad estructural de ANÉLIDOS

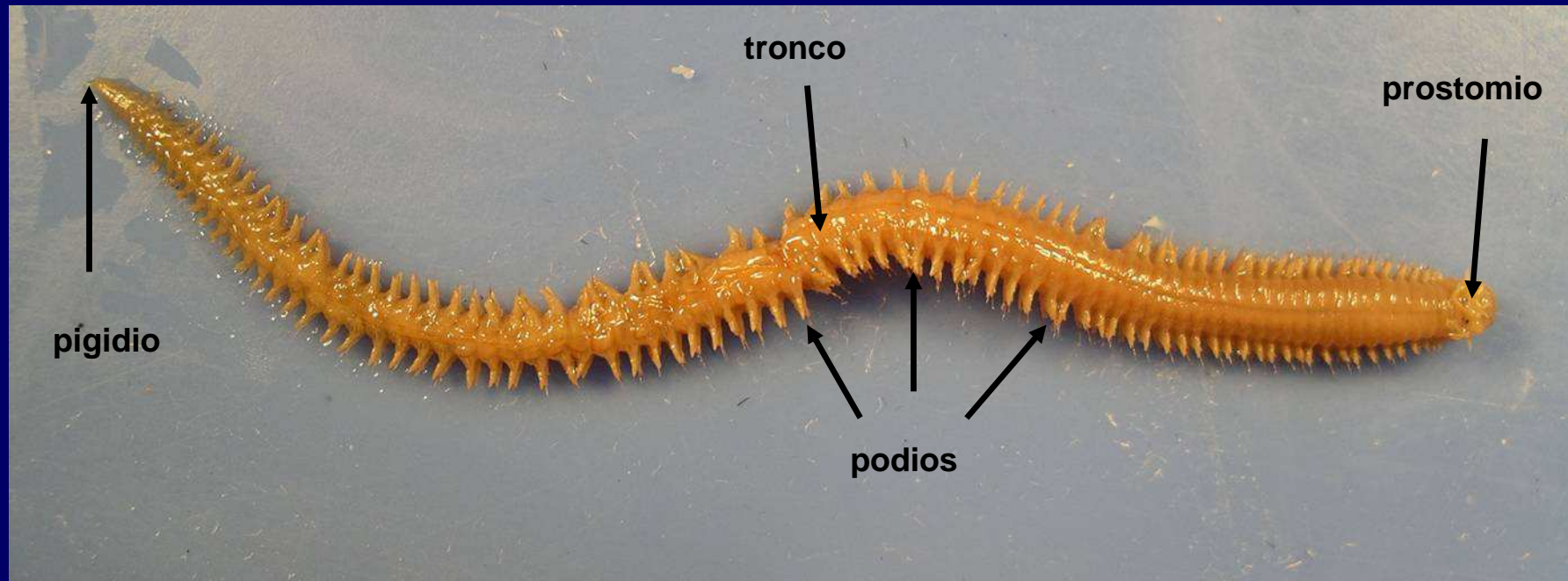
Fuente original:

Práctica 5

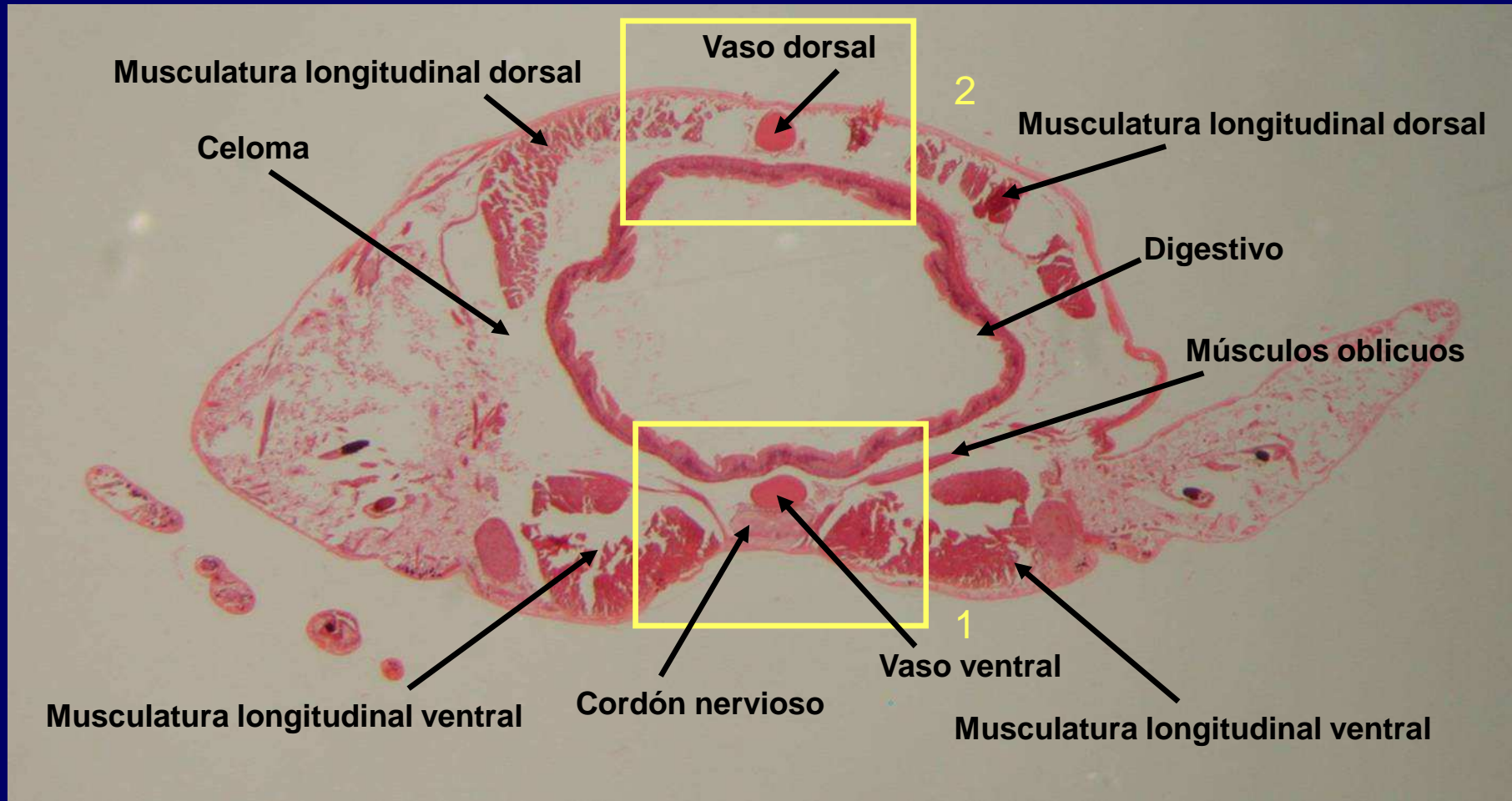
Estudio morfoanatómico de Anélidos

(Guía visual de las Prácticas de Zoología)

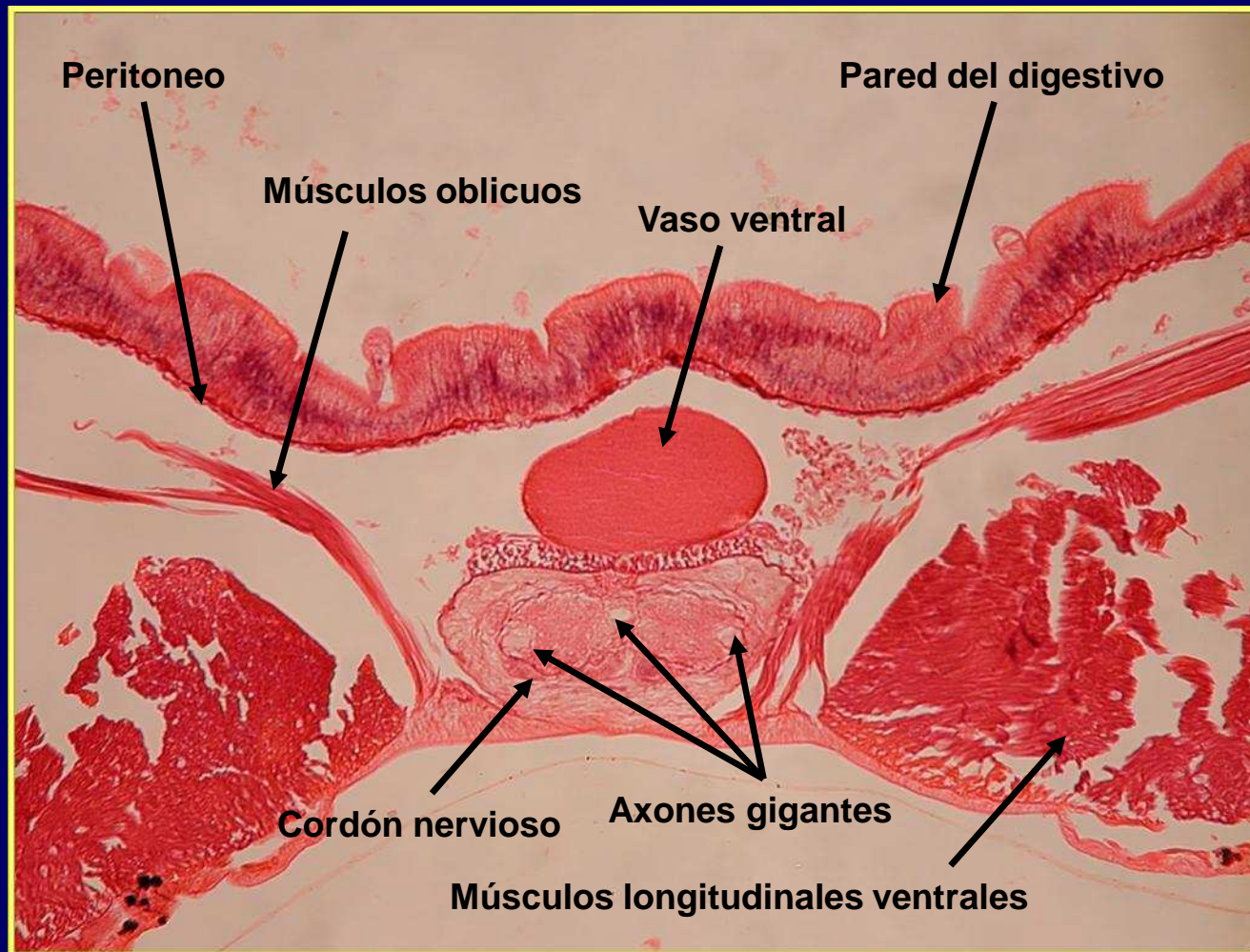
MD García, MI Arnaldos y JJ Presa



Nereis sp.

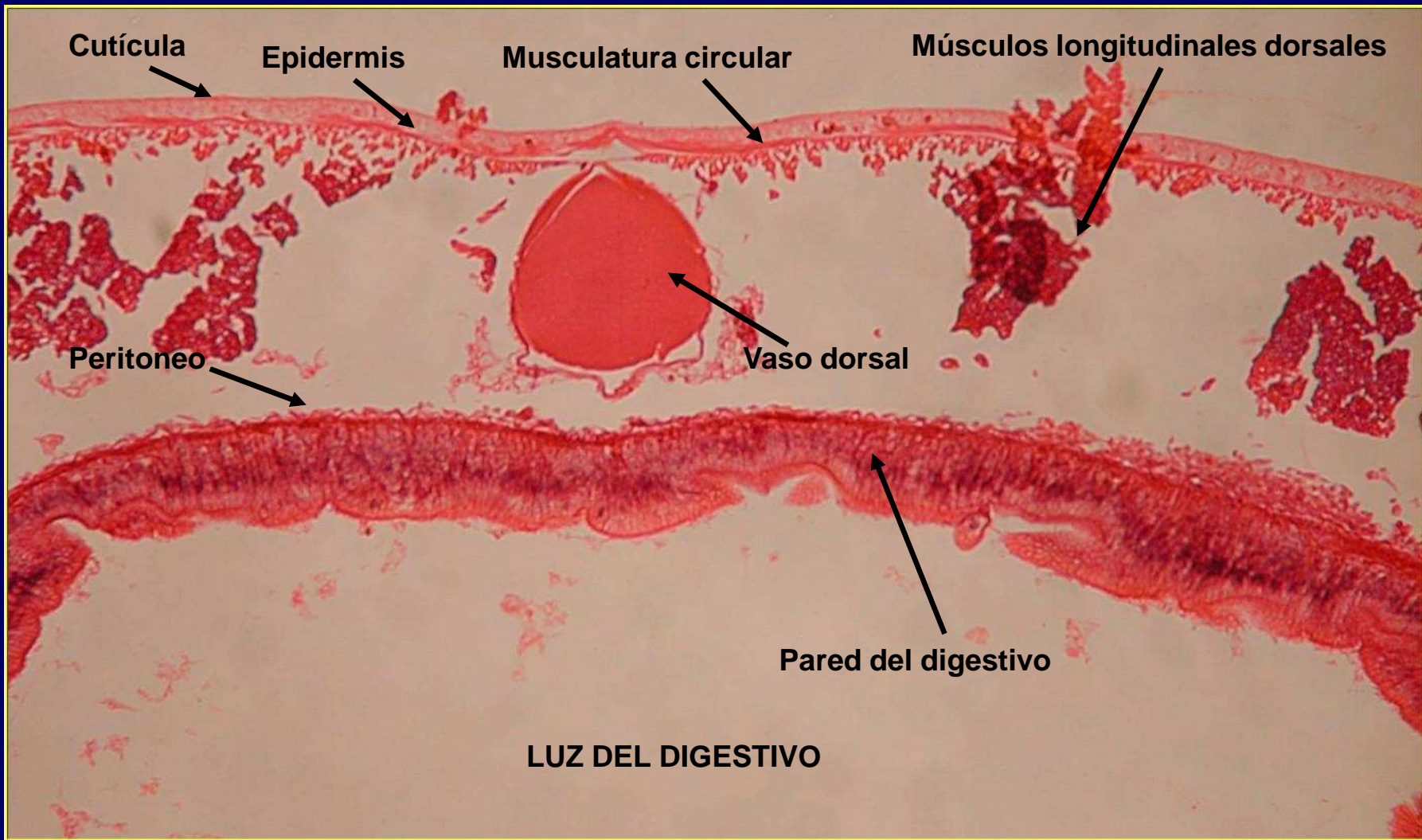


Nereis sp. Estructura de un segmento



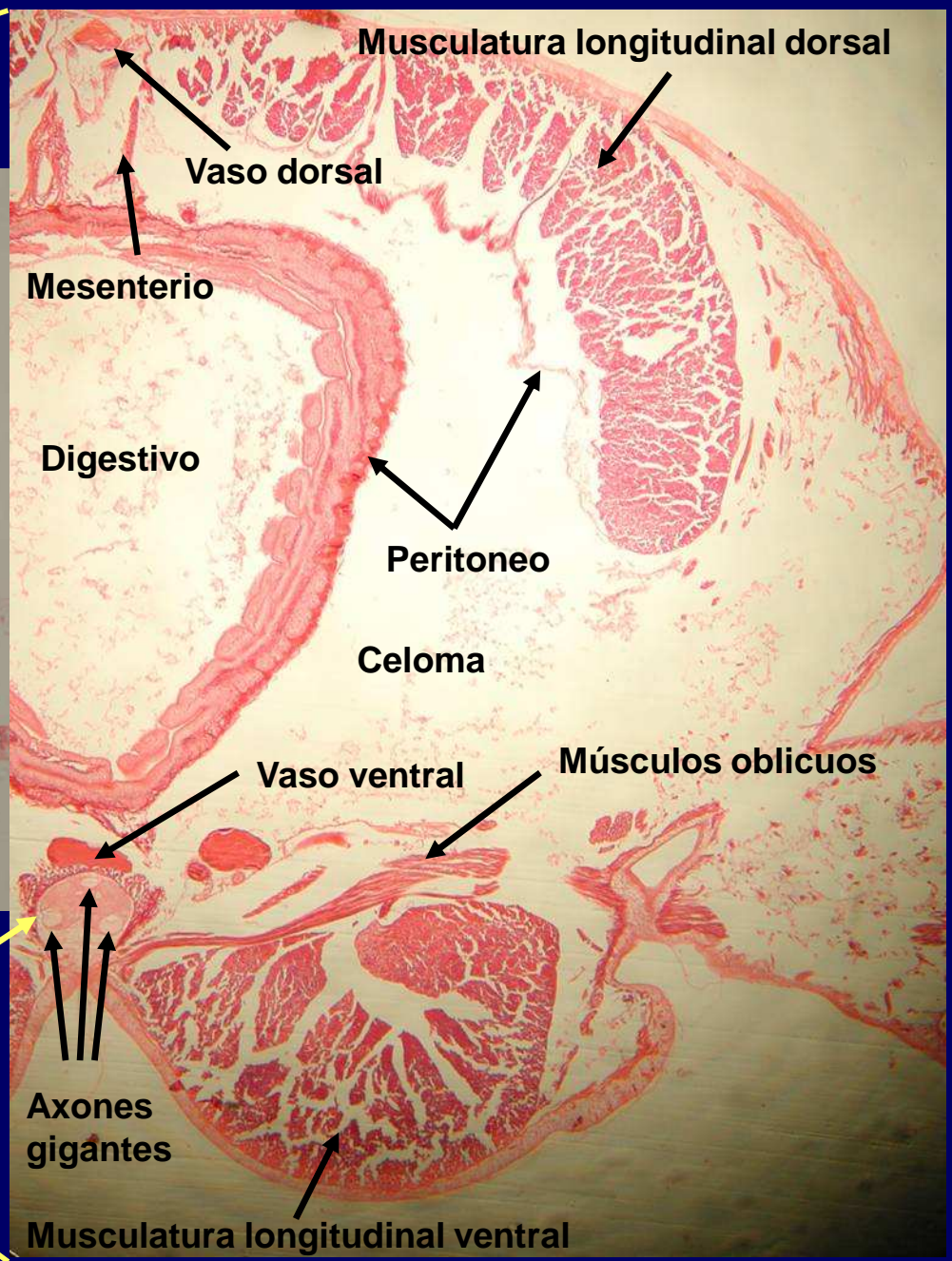
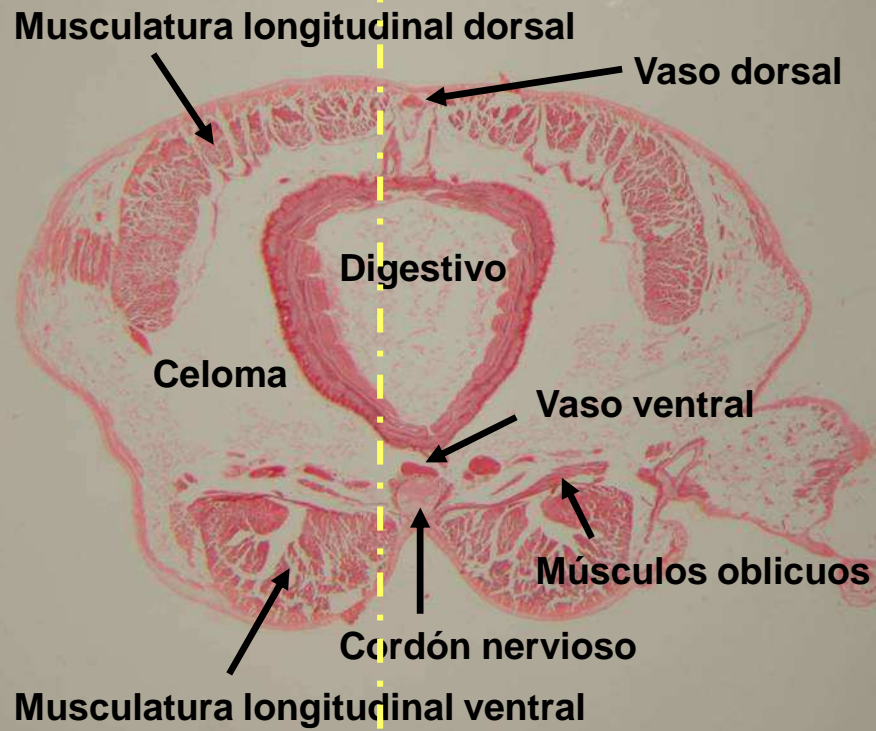
Nereis sp. Detalle 1



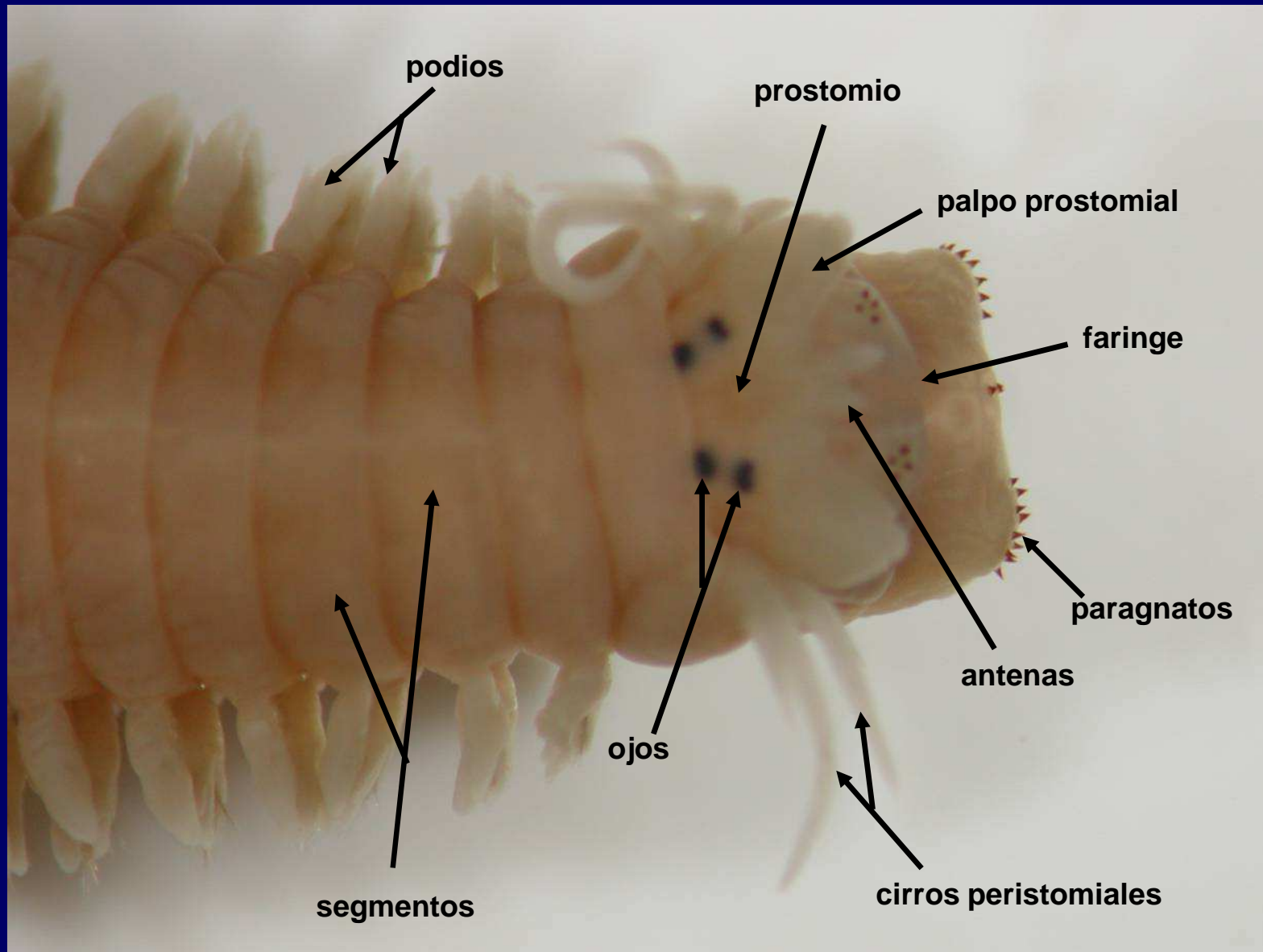


Nereis sp. Detalle 2

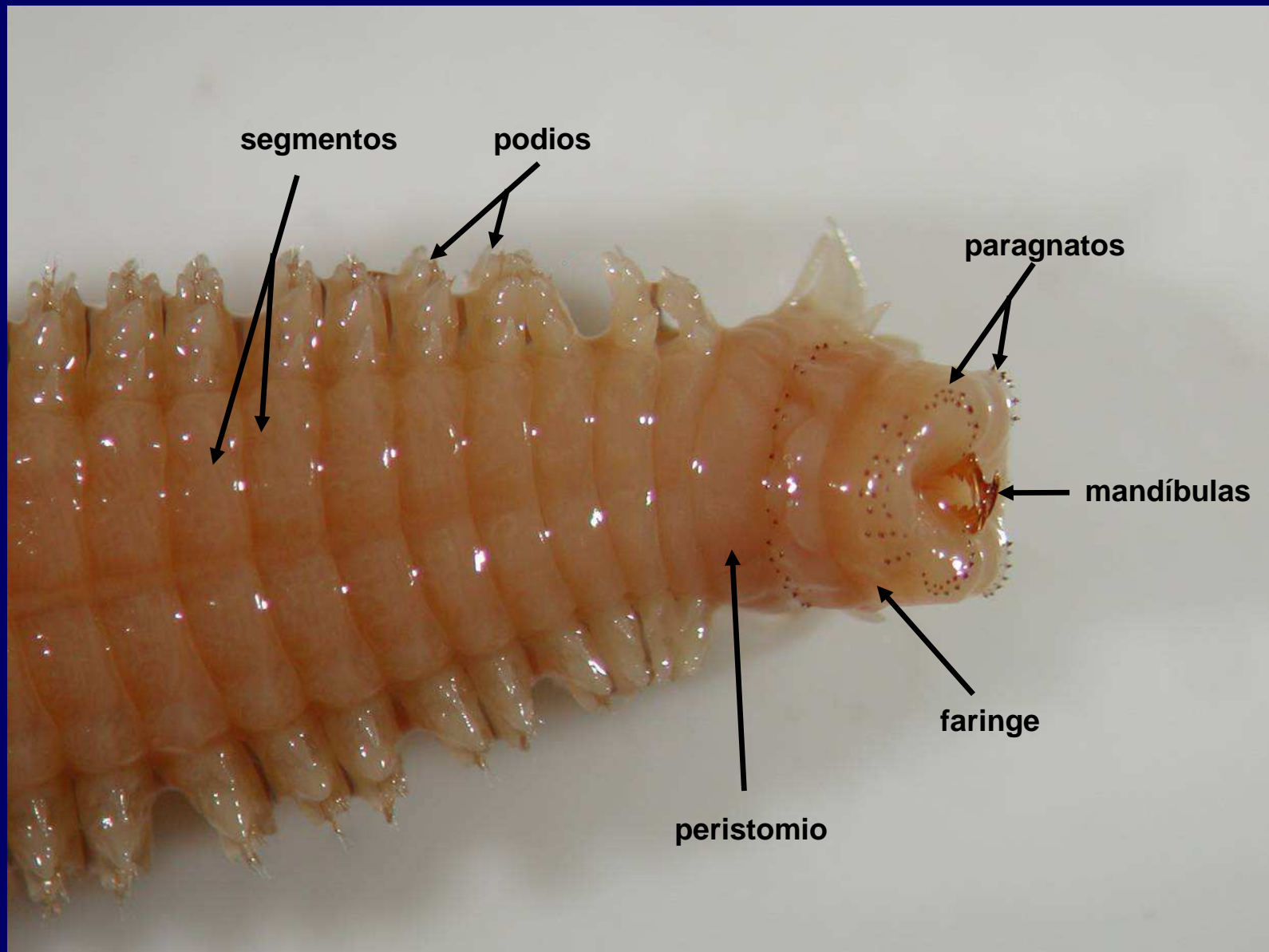




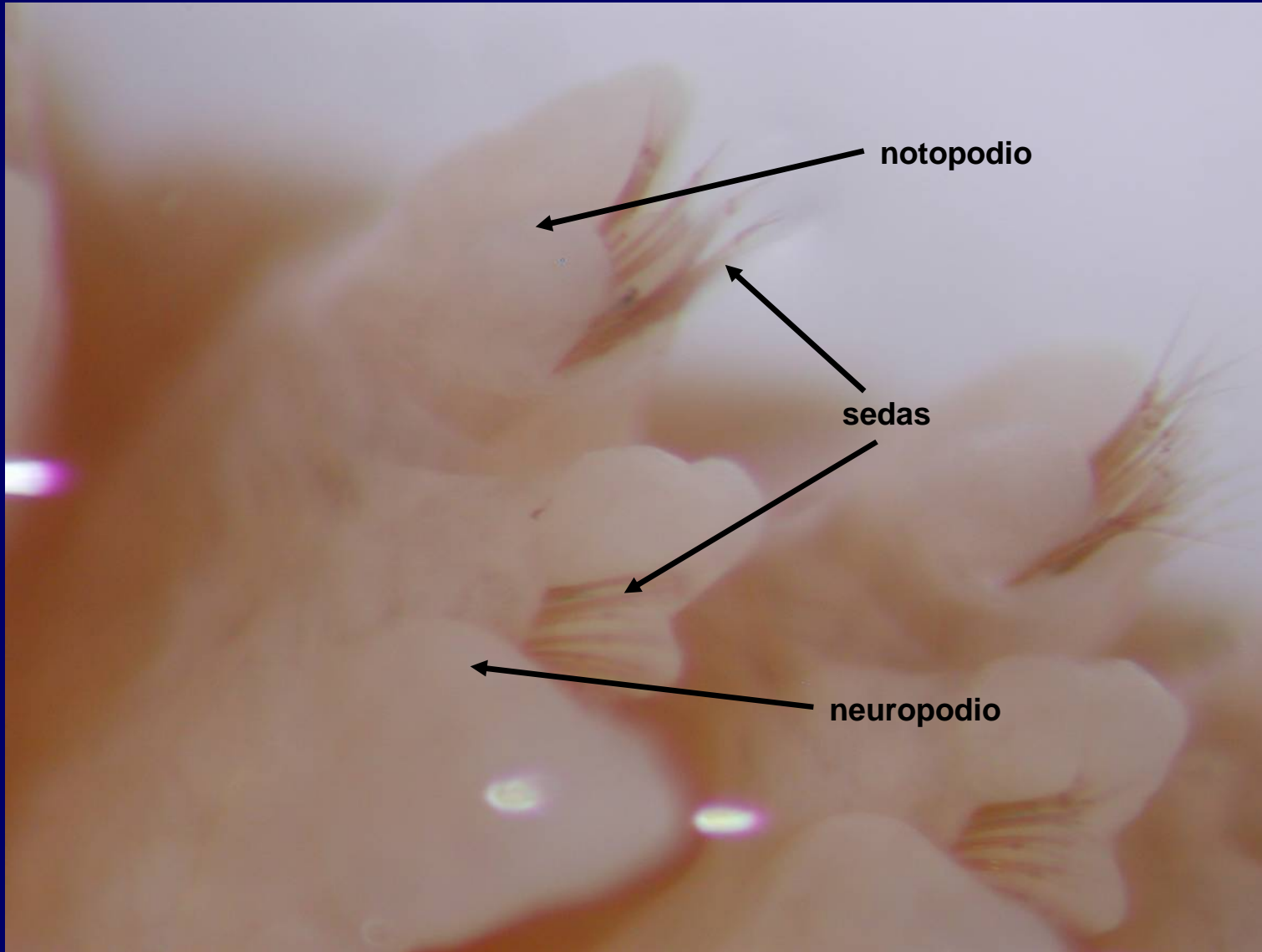
Cordón nervioso



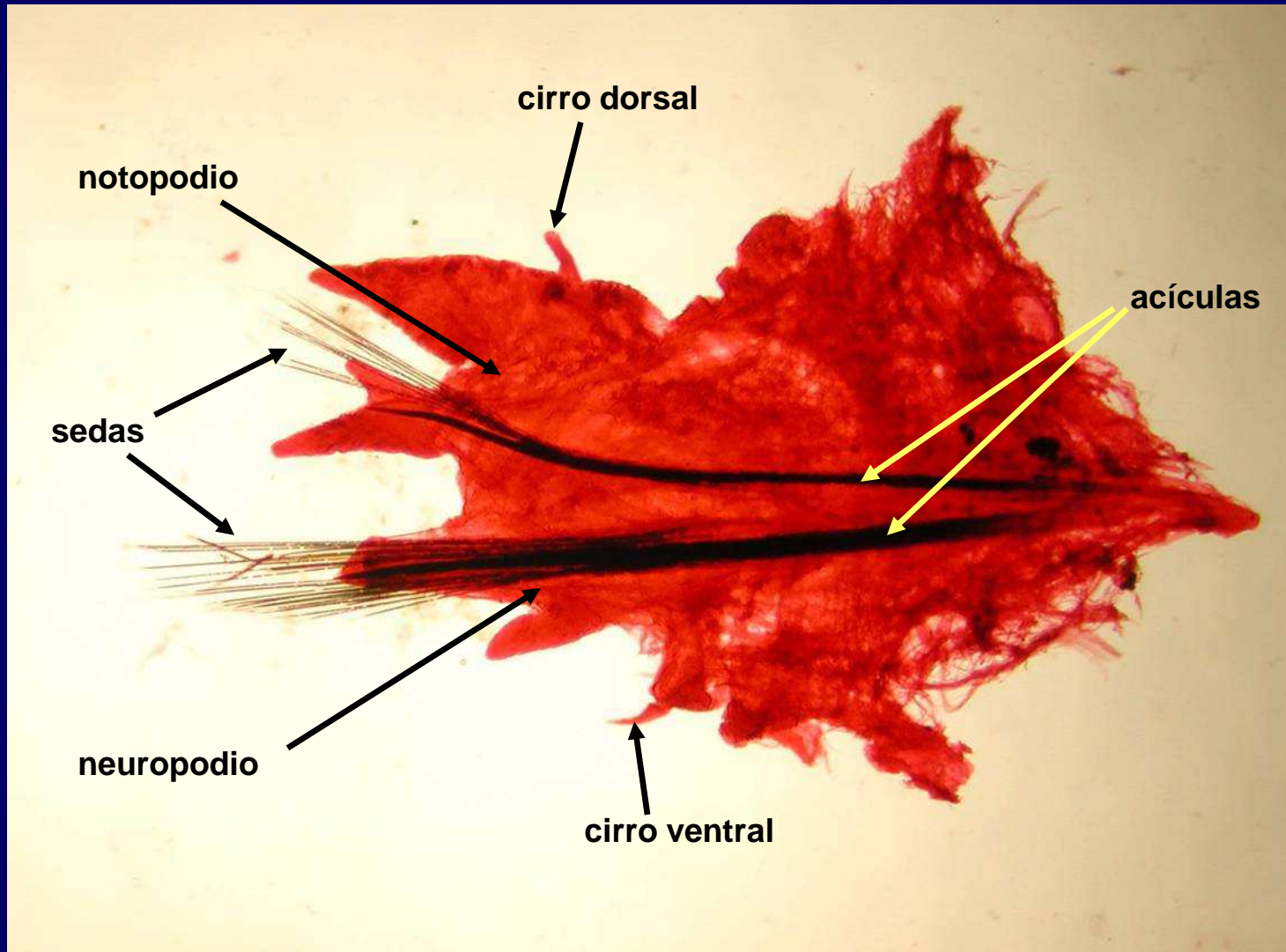
Nereis sp. Región anterior (visión dorsal)



Nereis sp. Región anterior (visión ventral)



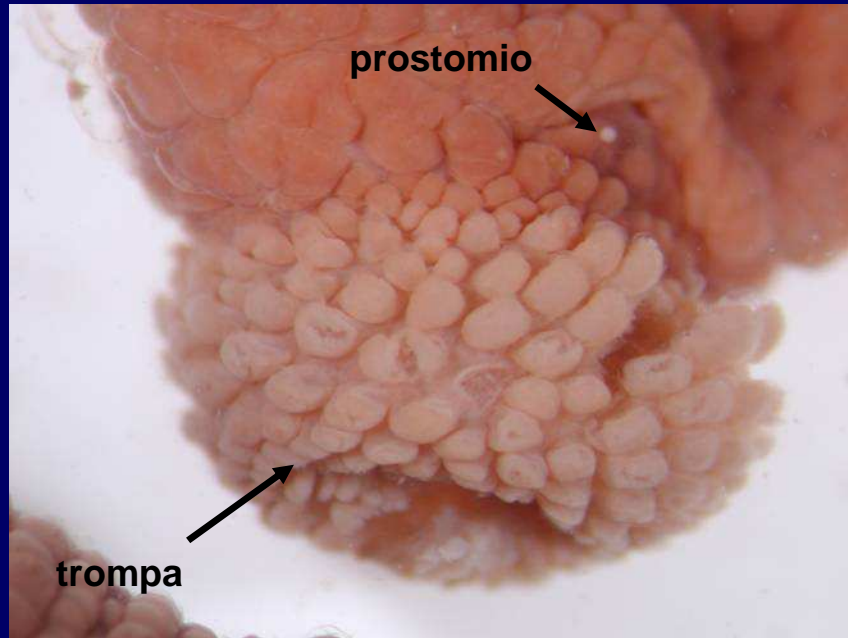
Nereis sp. Podio



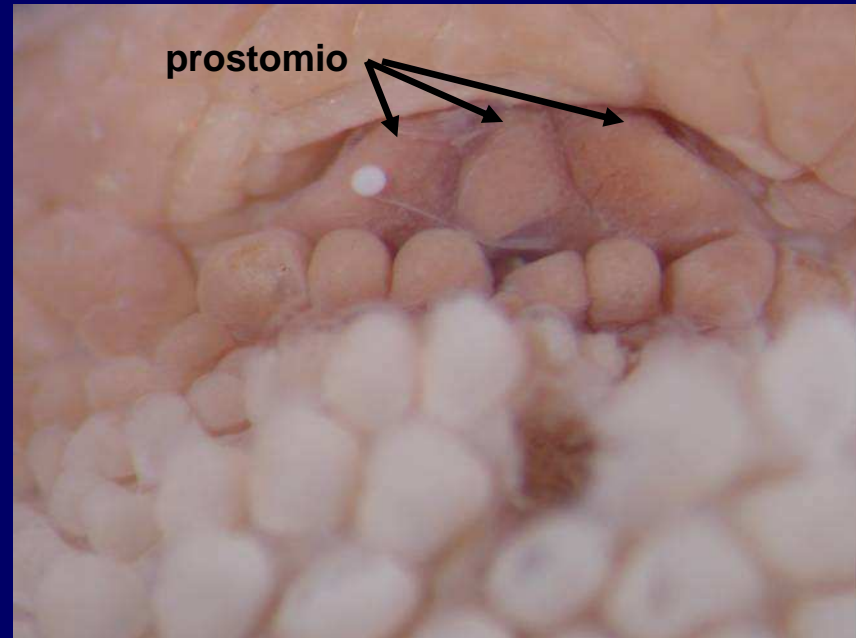
Nereis sp. Podio



Arenicola sp. Regiones corporales

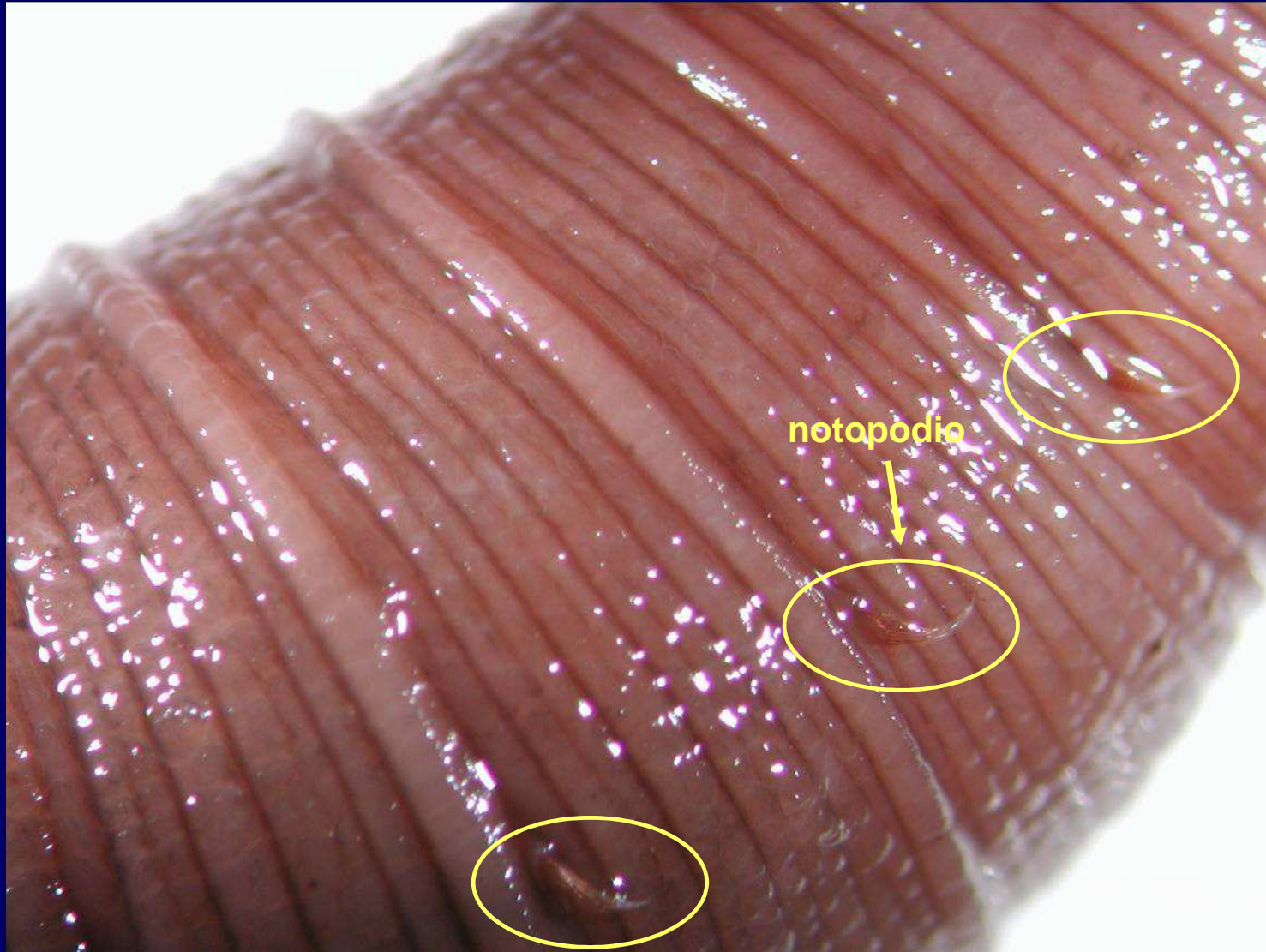


Trompa y prostomio

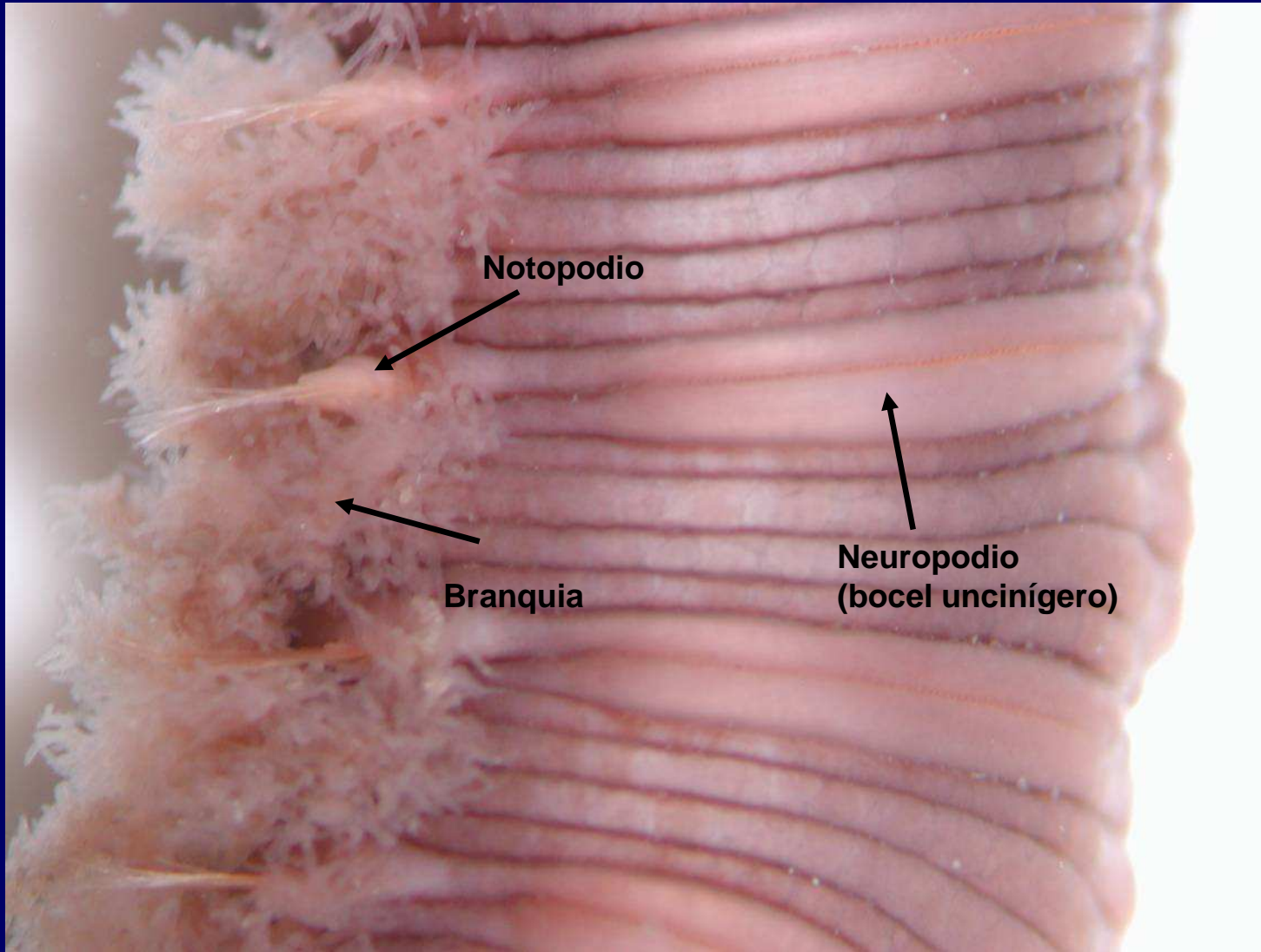


Detalle del prostomio

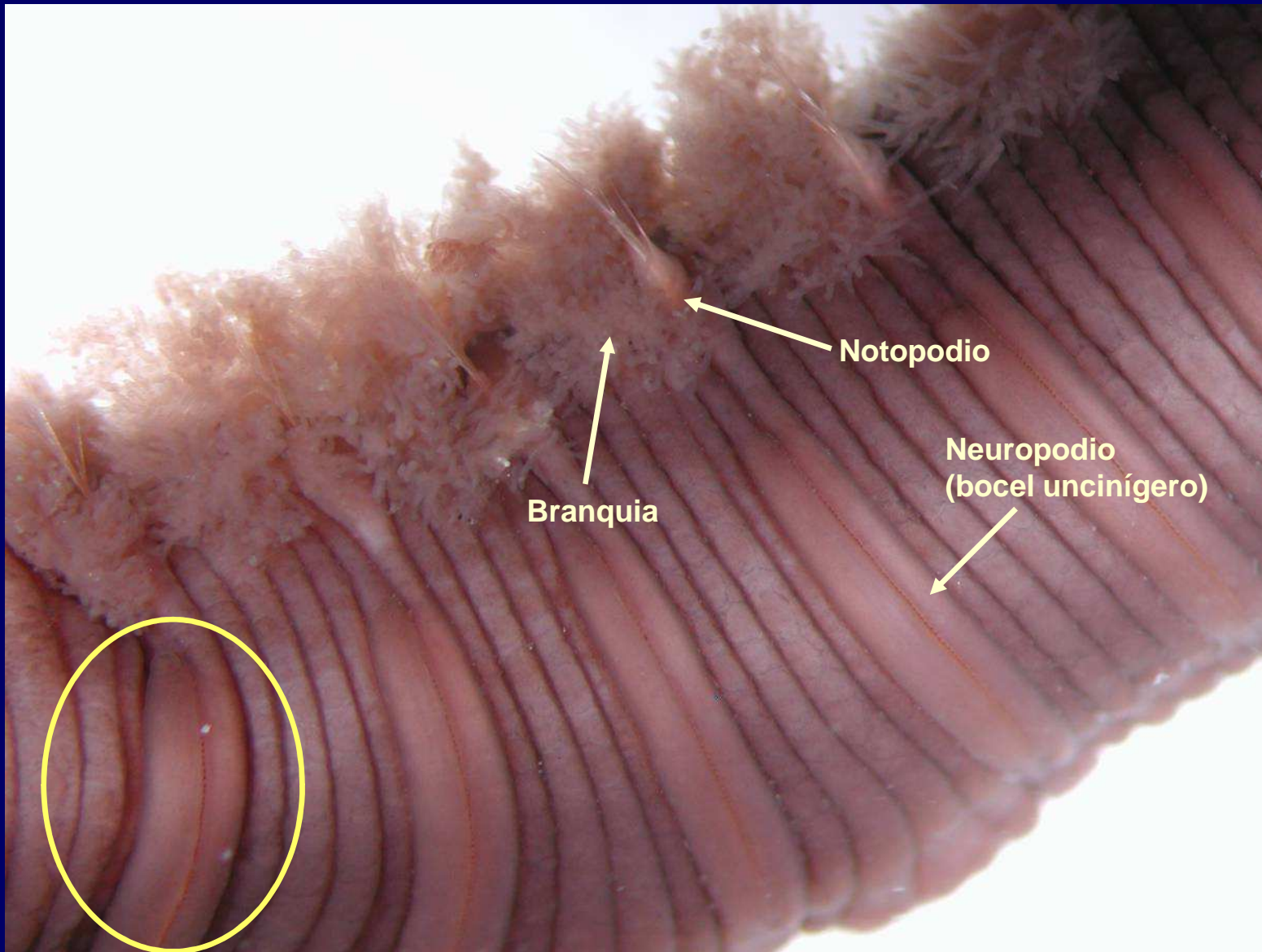
Arenicola sp.



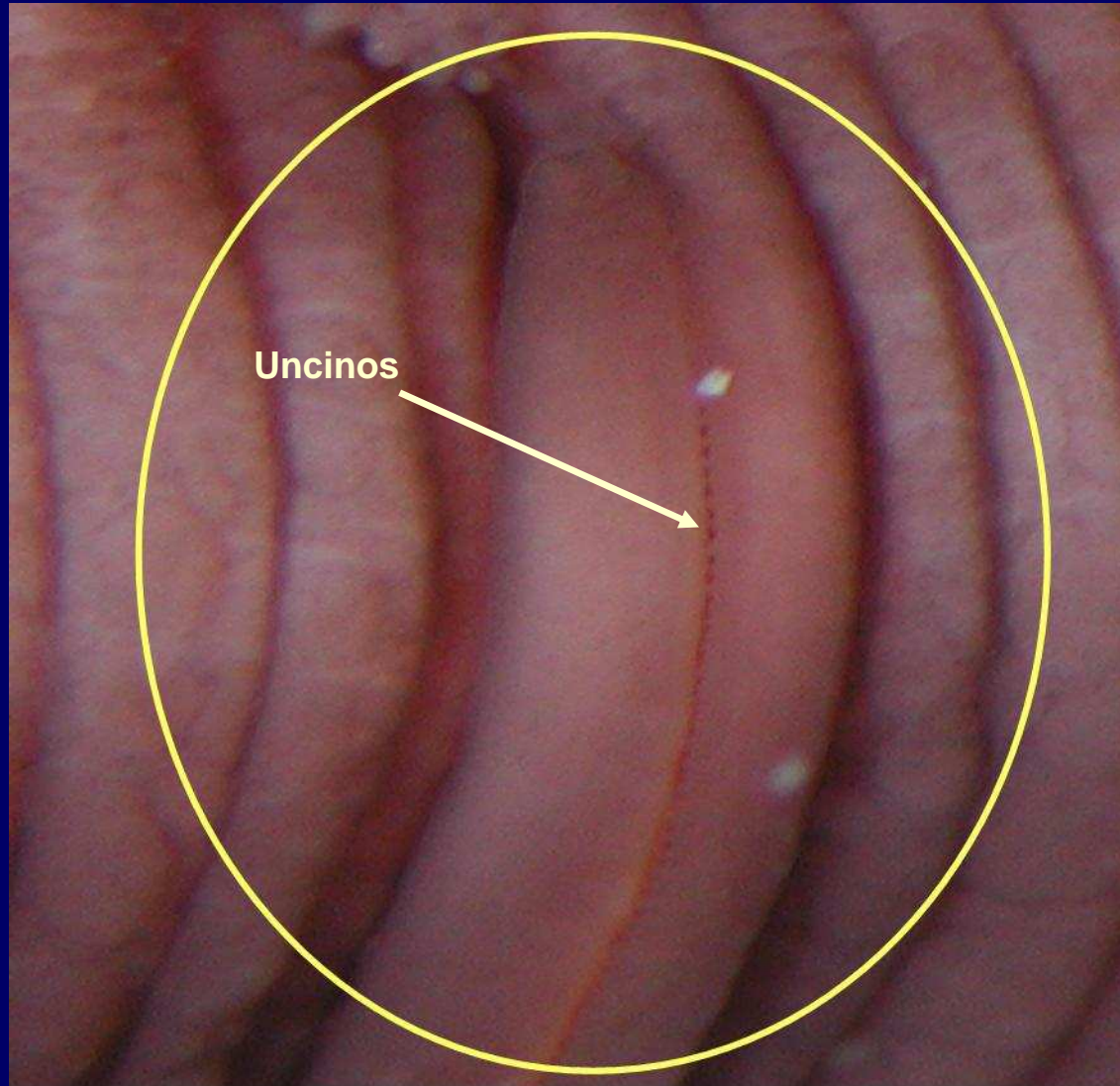
Arenicola sp. Región torácica



Arenicola sp. Región abdominal

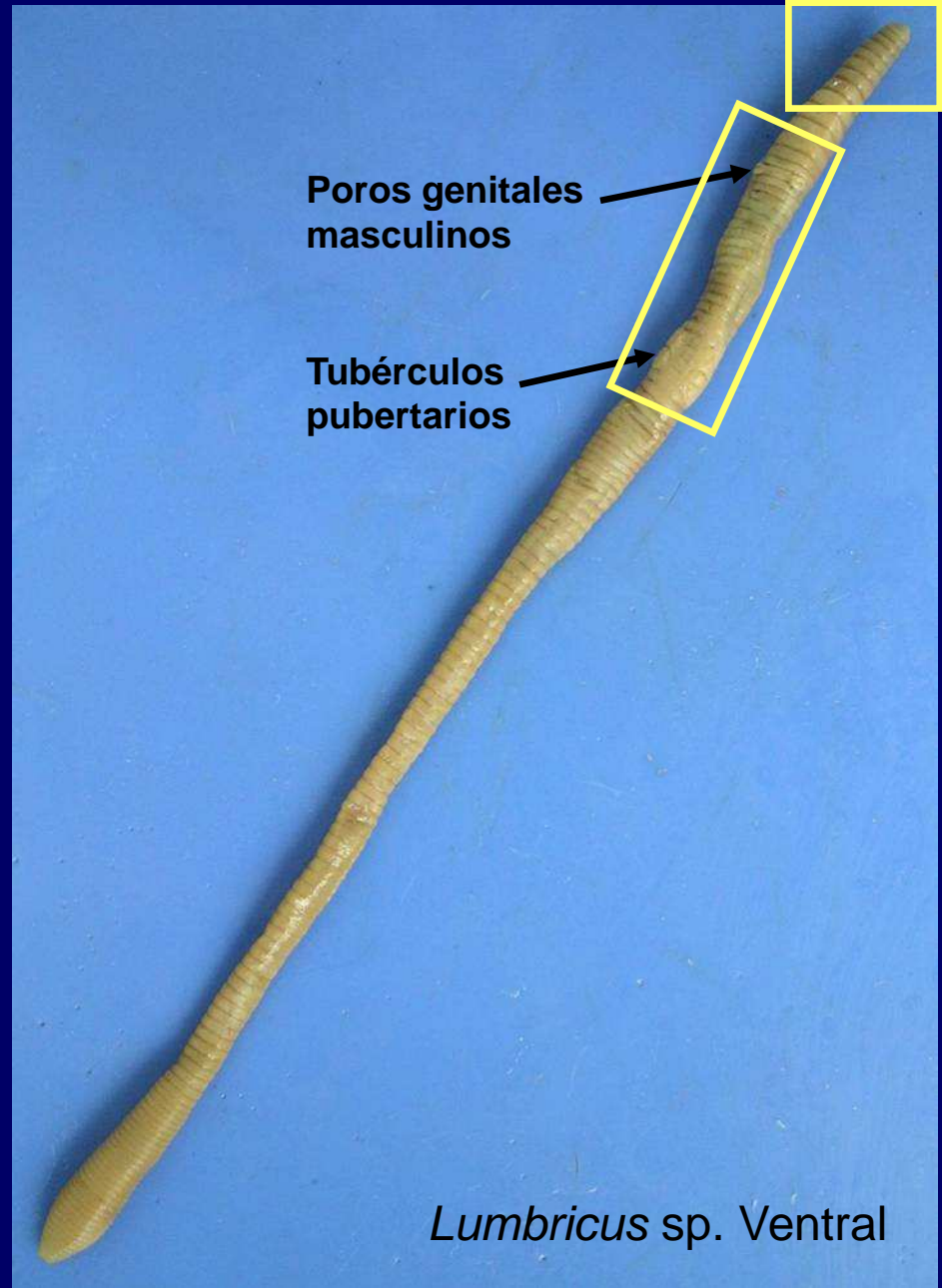


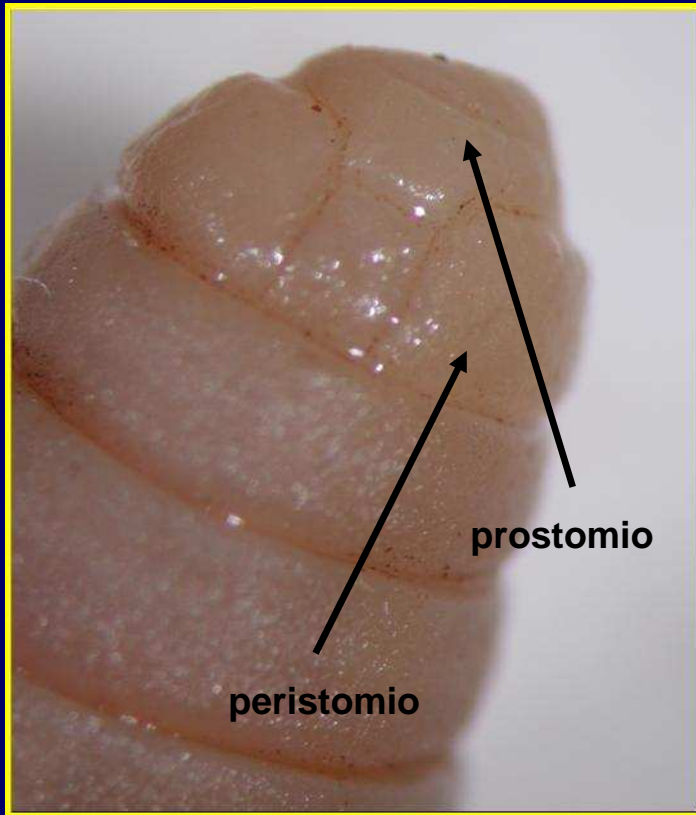
Arenicola sp. Región abdominal



Arenicola sp. Detalle del bocel uncinífero





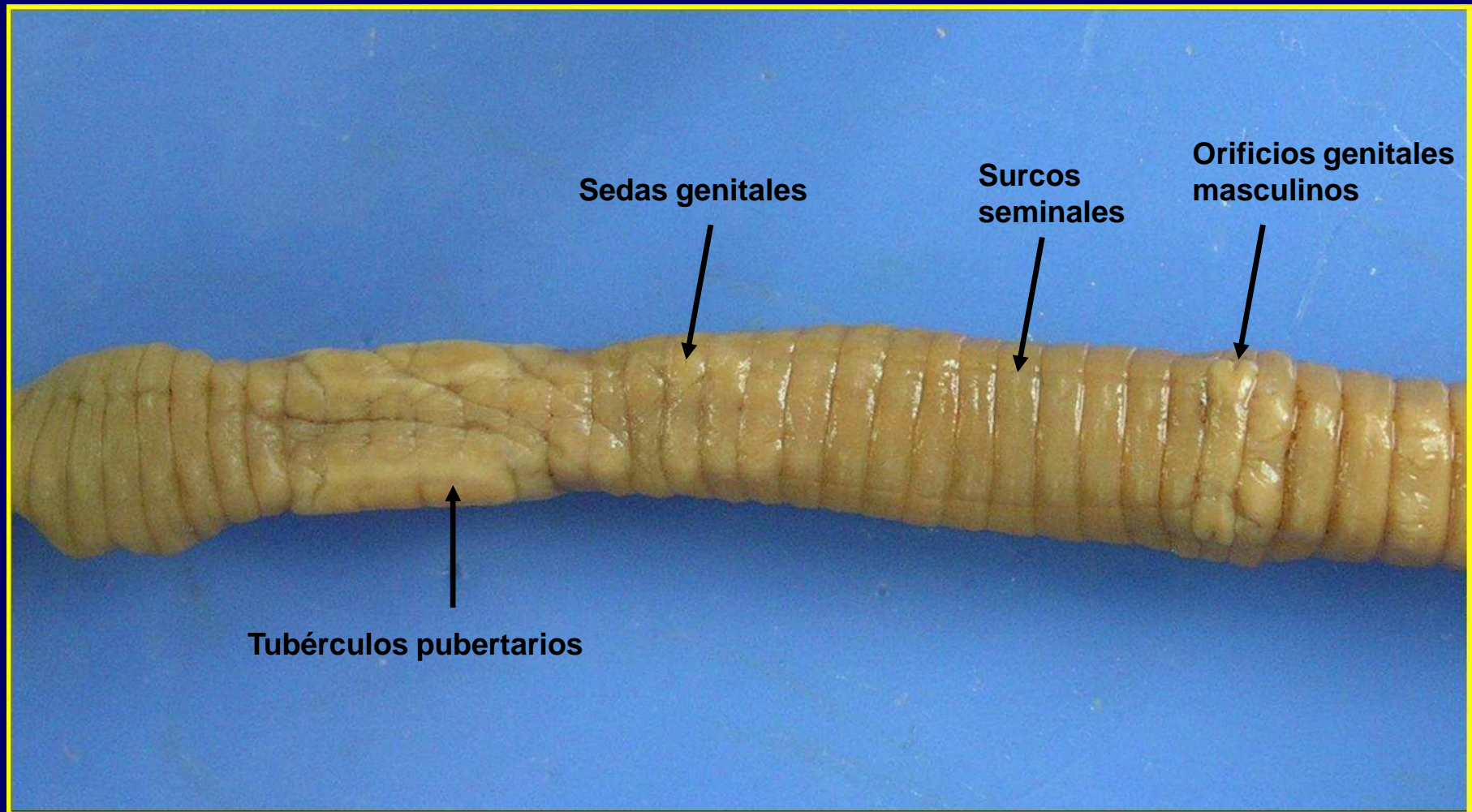


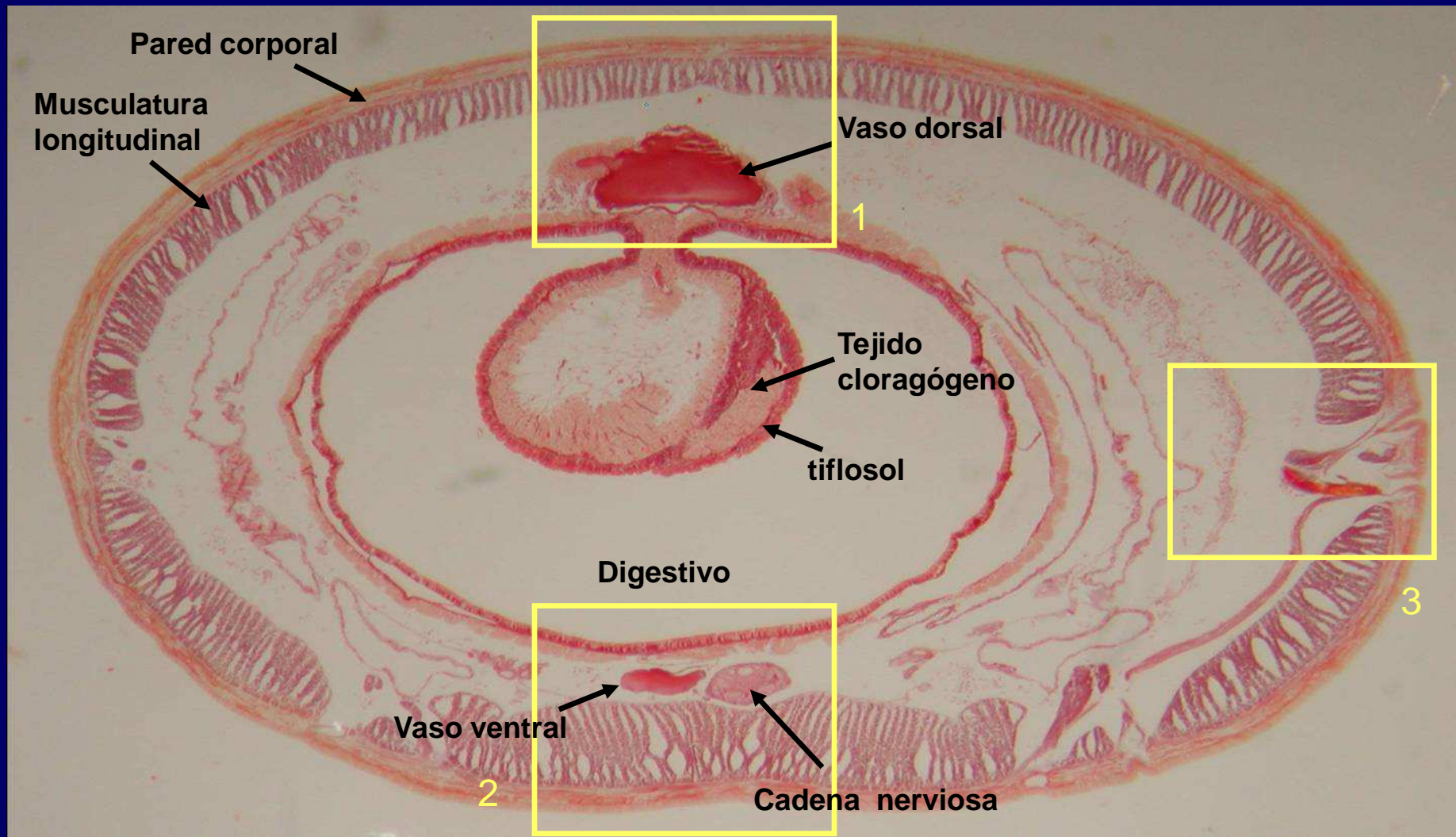
Lumbricus sp. Dorsal. Detalle



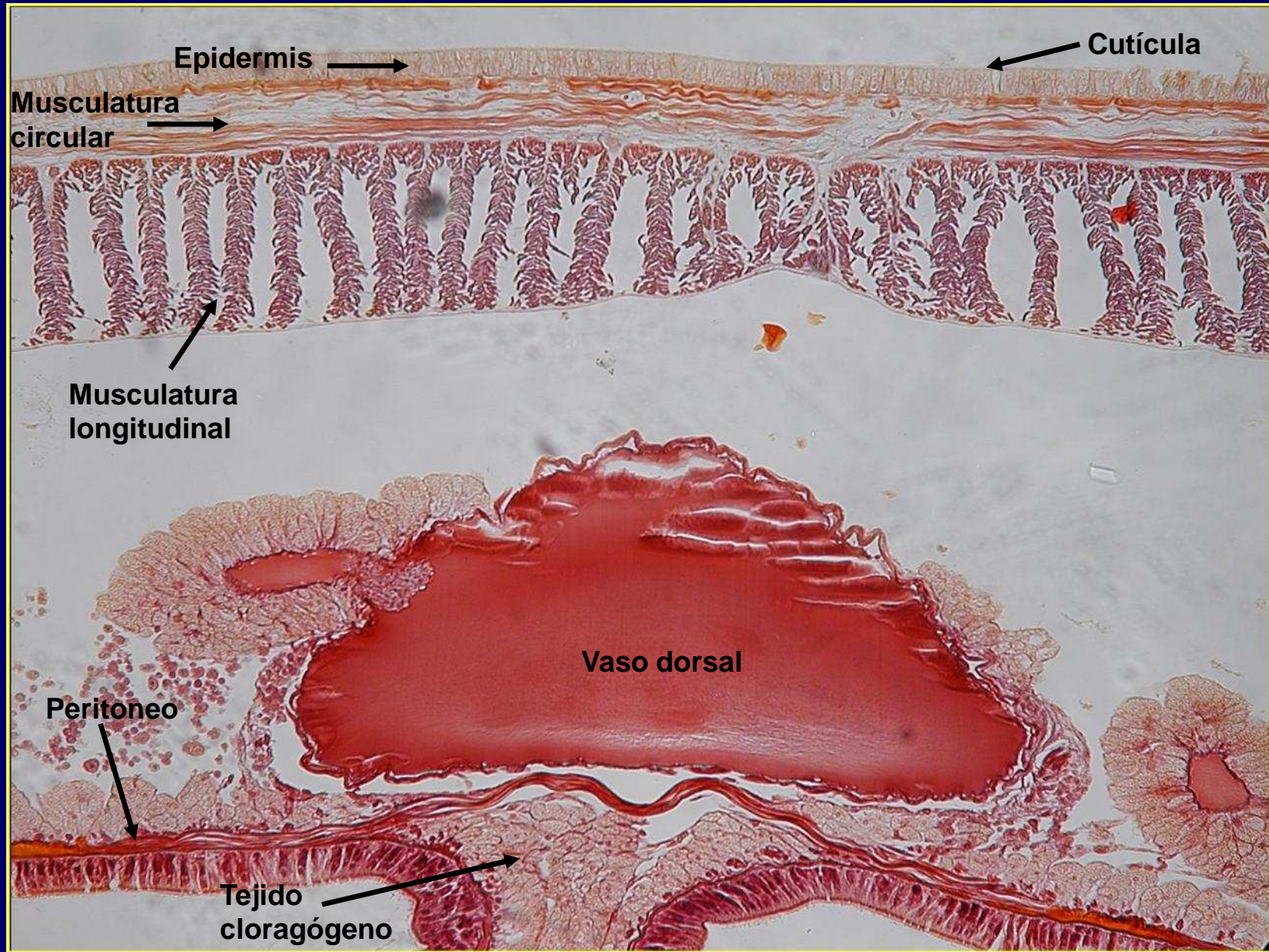
Lumbricus sp. Ventral. Detalle







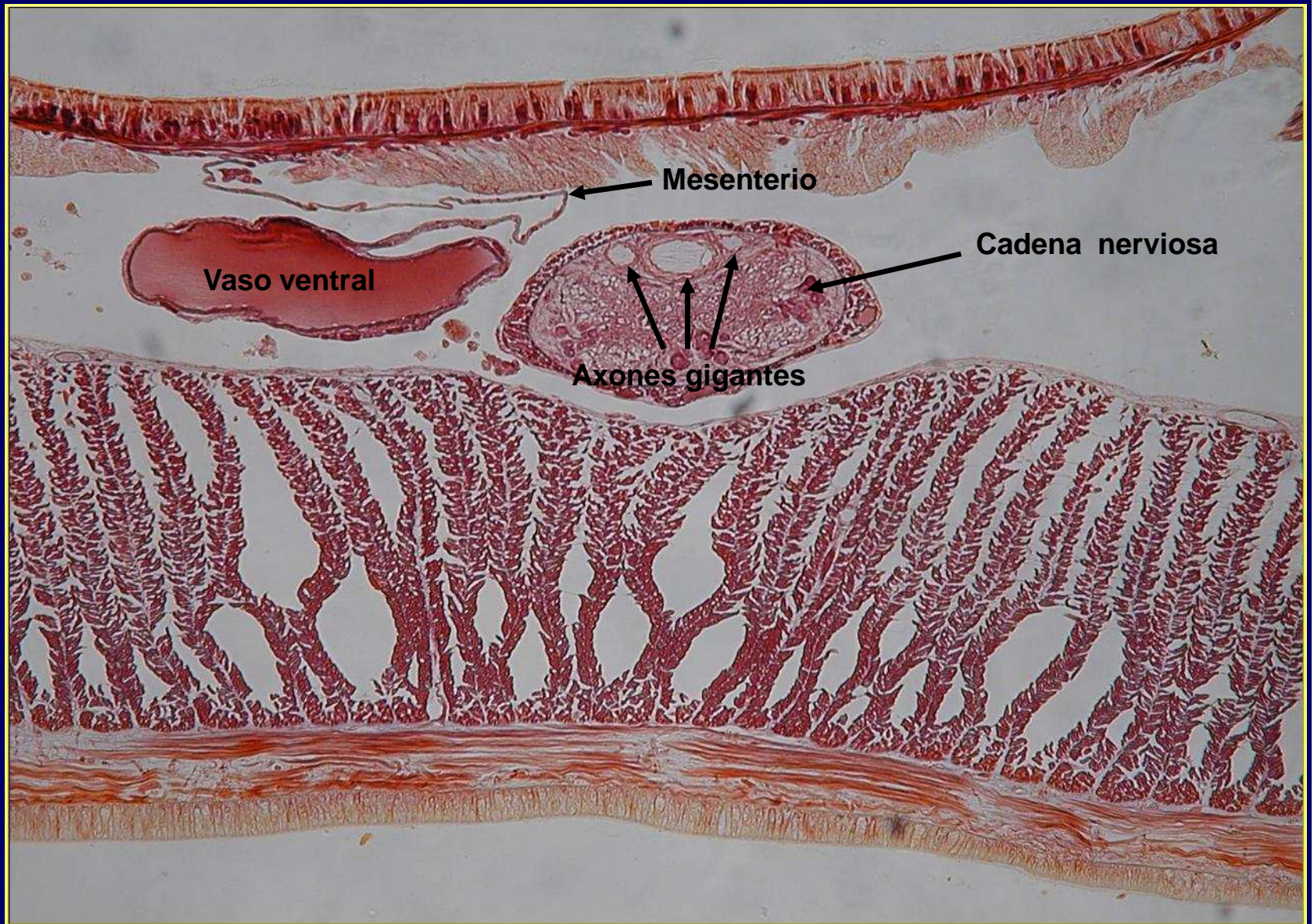
Lumbricus sp. Sección de un segmento



Lumbricus sp. Detalle 1

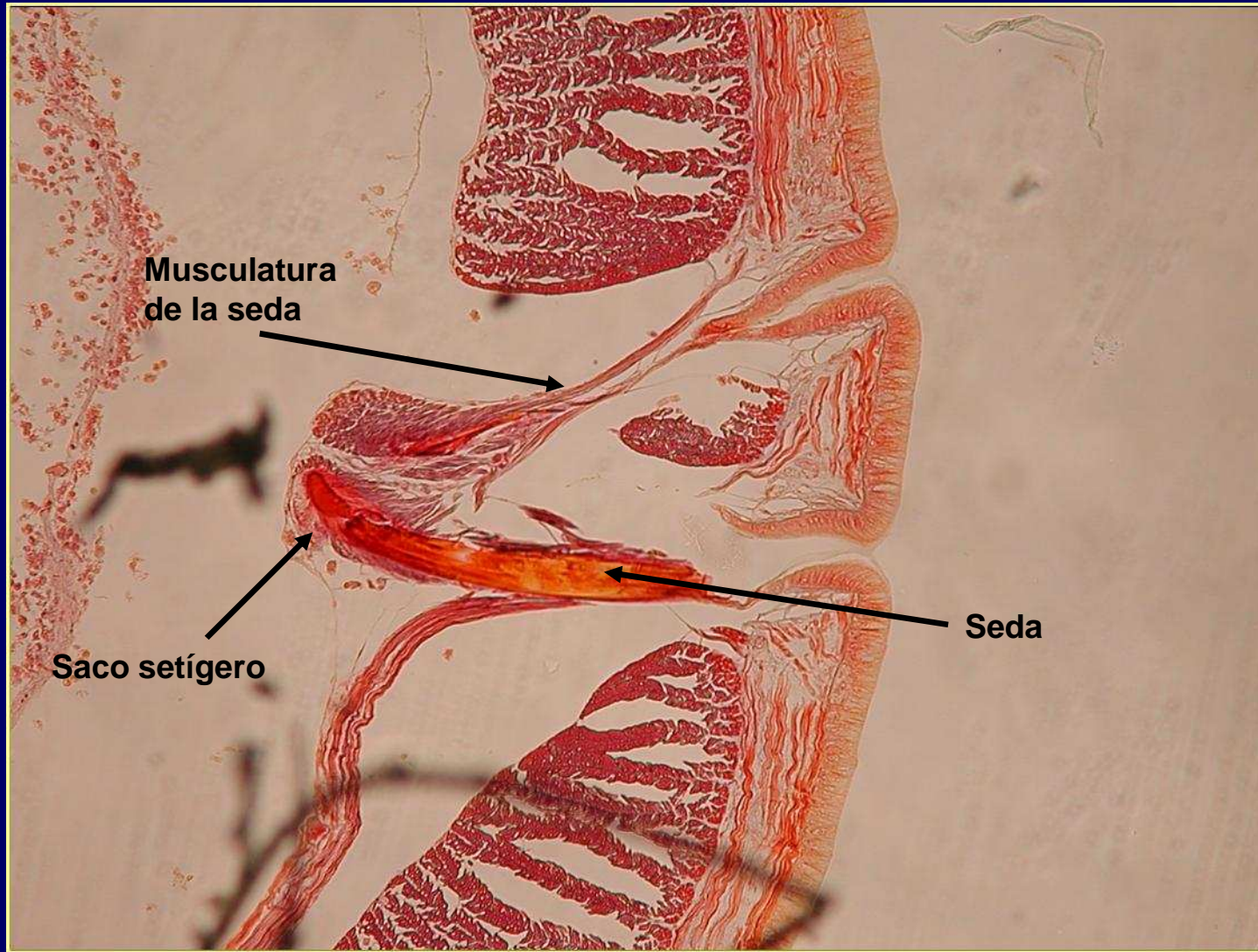


Pared del cuerpo



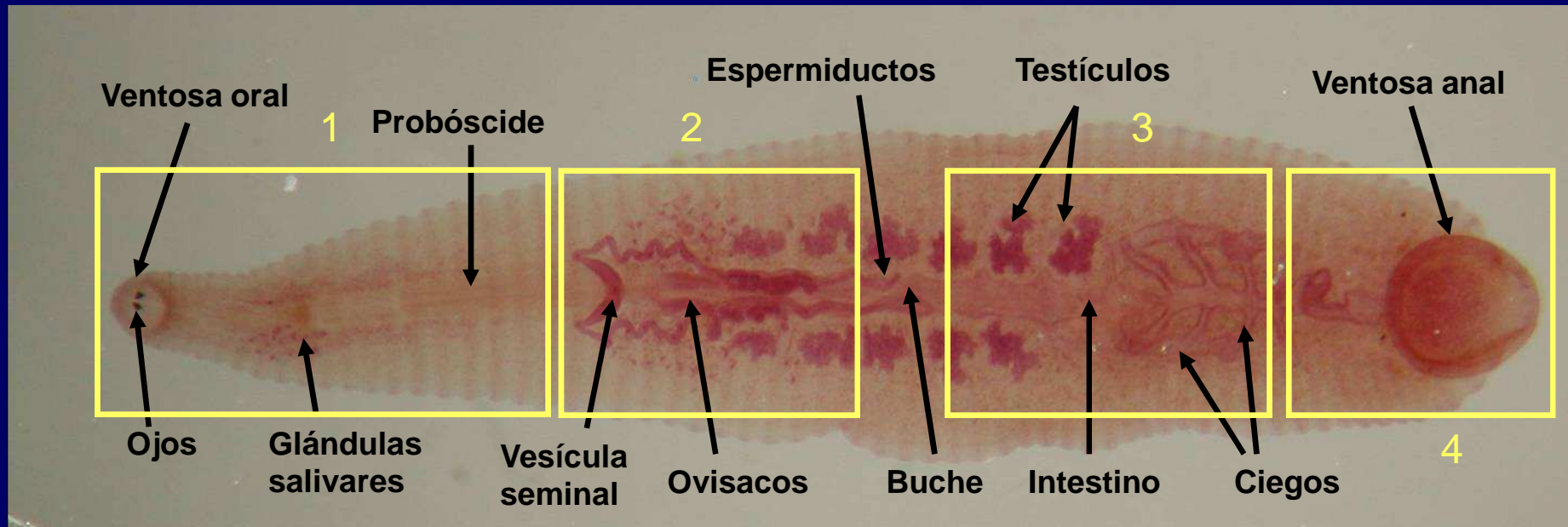
Lumbricus sp. Detalle 2



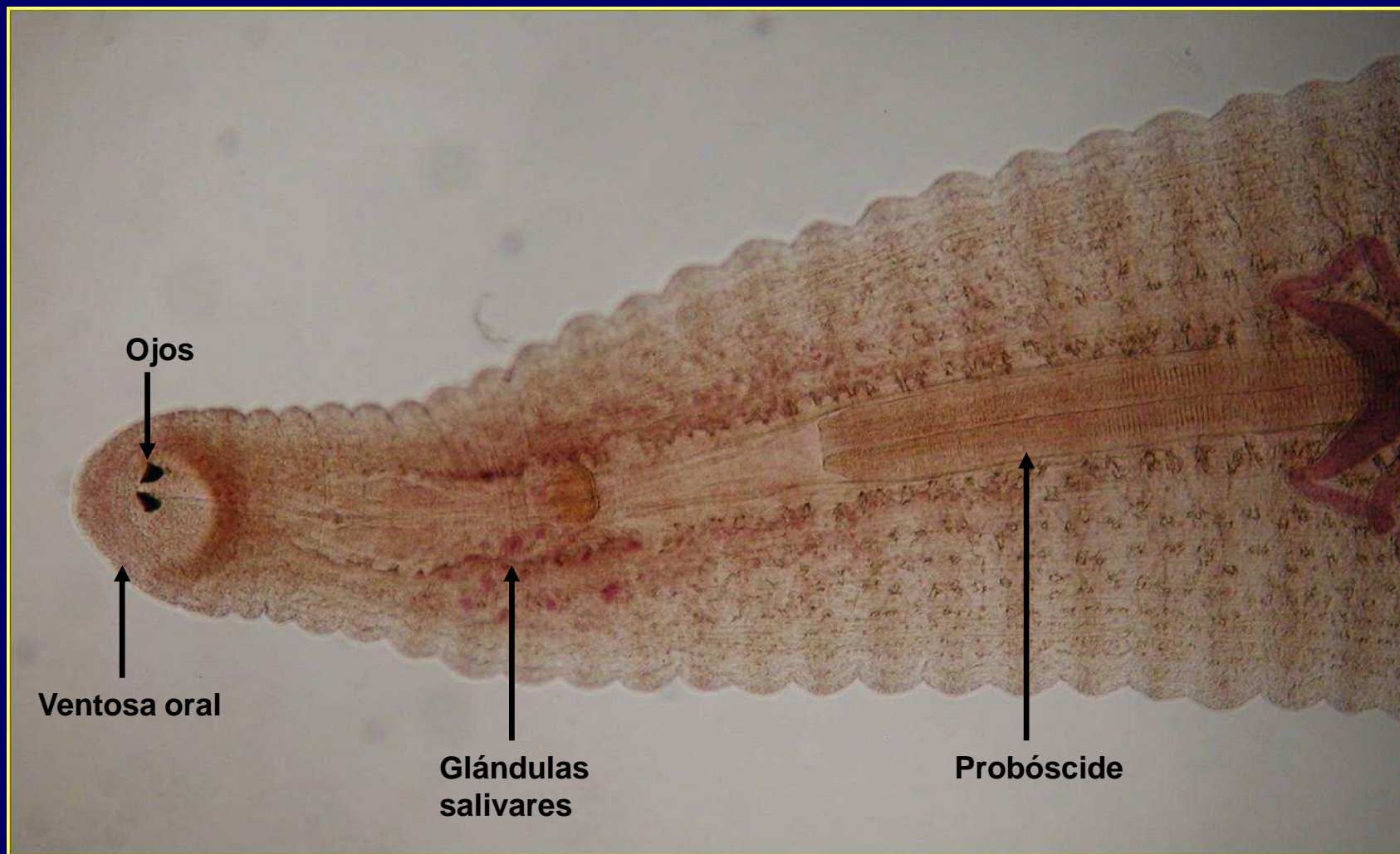


Lumbricus sp. Detalle 3. Inserción de sedas



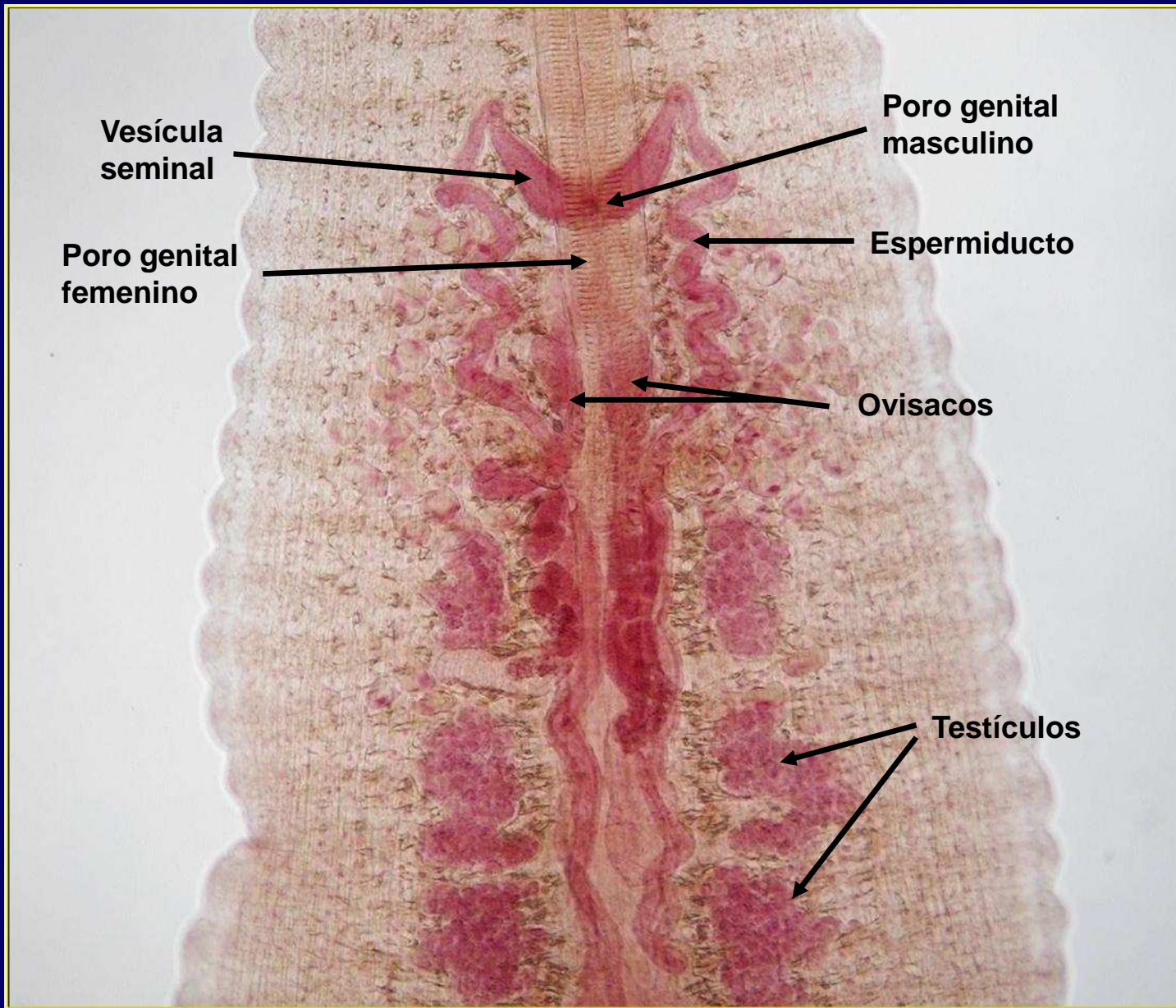


Hirudíneo. Anatomía interna



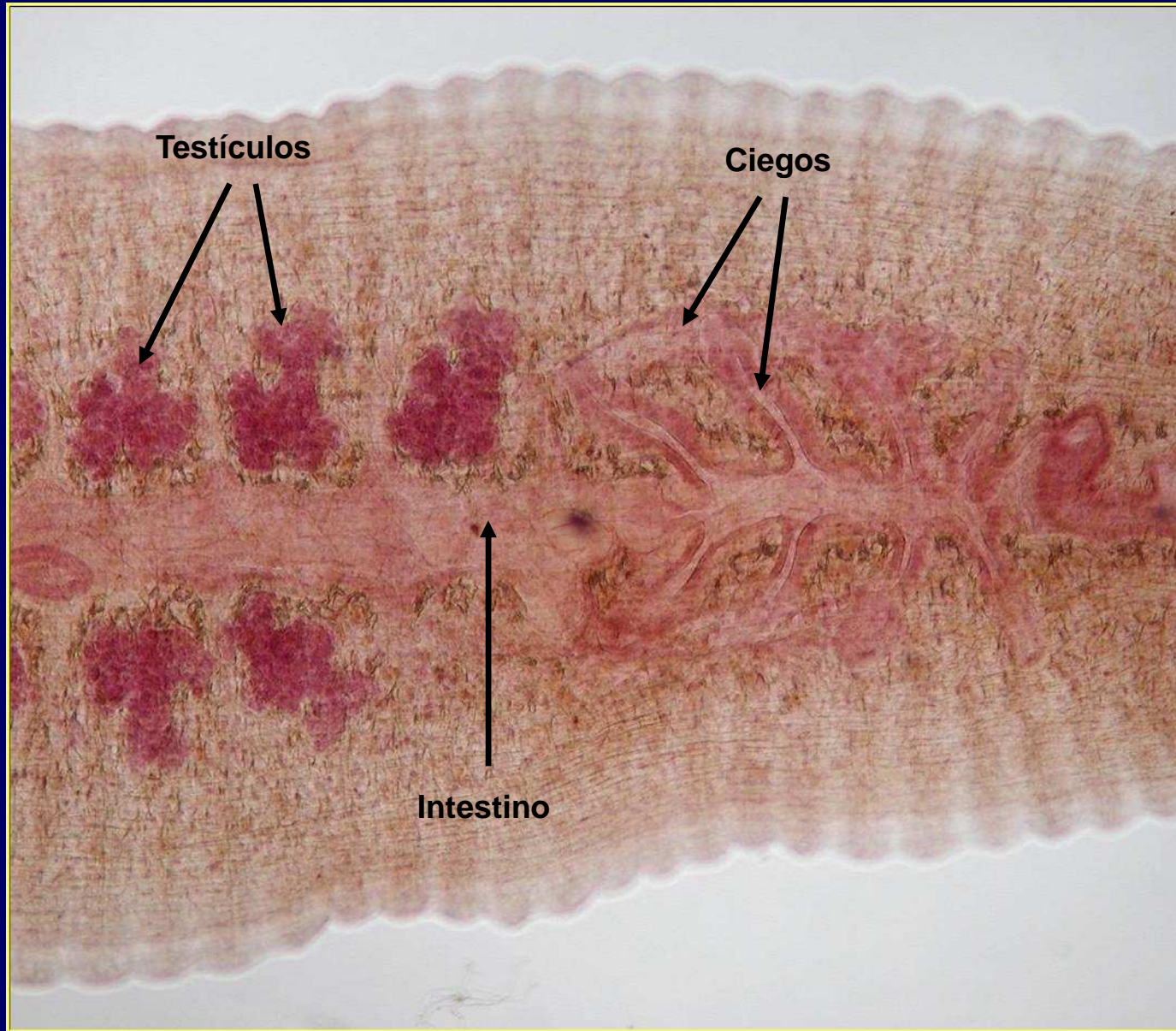
Hirudíneo. Detalle 1





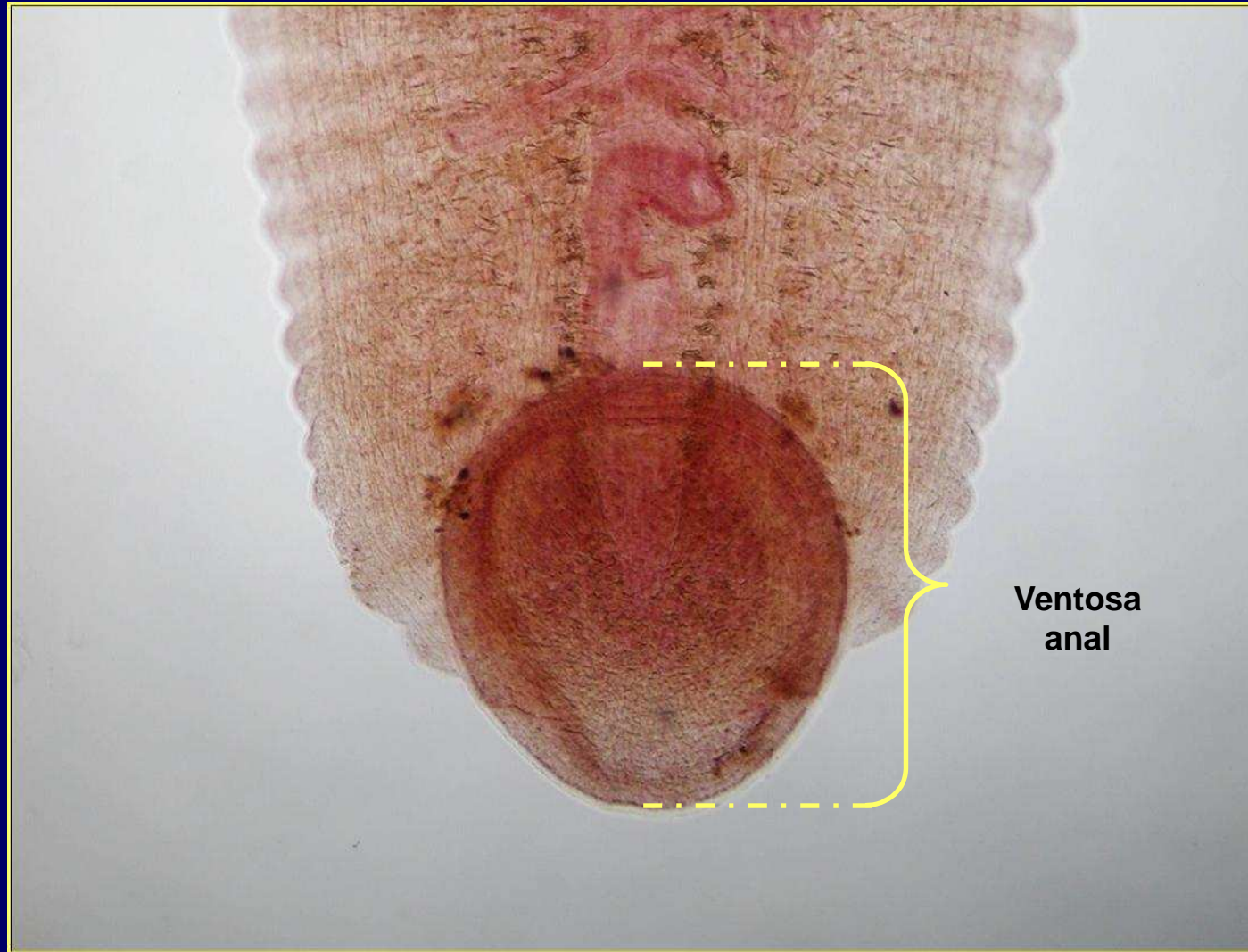
Hirudíneo. Detalle 2





Hirudíneo. Detalle 3





Hirudíneo. Detalle 4

