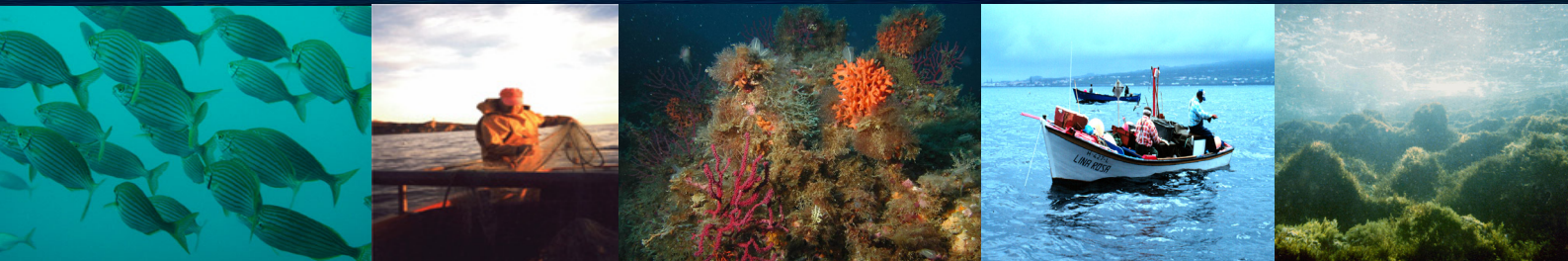


(European Marine Protected Areas as tools for Fisheries management and conservation)

Contract no. 006539



EMPAFISH is a project supported by the European Community within the specific programme “Integrating and strengthening the ERA” (6th Framework Programme), under the activity “Scientific Support to Policies” and the research priority for “Modernisation and sustainability of fisheries, including aquaculture-based production system”.

The EMPAFISH project, which runs from March 2005 to February 2008, represents real progress in the management of MPAs in the European context, as the results of the project will permit:

1. Selection and validation of appropriate tools (indicators, protocols and procedures) to evaluate the performance of MPAs (under different management regimes).
2. Application and enhancement of eco-modelling tools, facilitating their usefulness and applicability for management purposes.
3. Provision of guidelines for the definition of objectives, design, location, management and monitoring of European MPAs, based on a multidisciplinary scheme, using the best empirical information available to date.
4. Facilitation of the incorporation of stakeholders within the management of coastal zones.

The general objectives are:

To investigate the potential of different regimes of MPAs in Europe to protect sensitive and endangered species, habitats and ecosystems from the effects of fishing.

To develop quantitative methods to assess the effects of marine protected areas.

To provide the EU with a set of integrated measures and policy proposals for the implementation of MPAs as fisheries and ecosystem management tools.



- The project brings together scientists with expertise in marine ecology, fisheries and ecological modelling, and coastal area management particularly relating to MPAs.

- The project will convene a stakeholders committee (Reference User Group, RUG) comprising administrators (local, regional and national), fisheries managers, fishermen’s organizations and other social stakeholders (tourist consortia responsible for diving activities and affected by the development of MPAs).

The project is organised in 7 workpackages:

WP0: Coordination of overall project

WP1: Ecological effects of MPAs

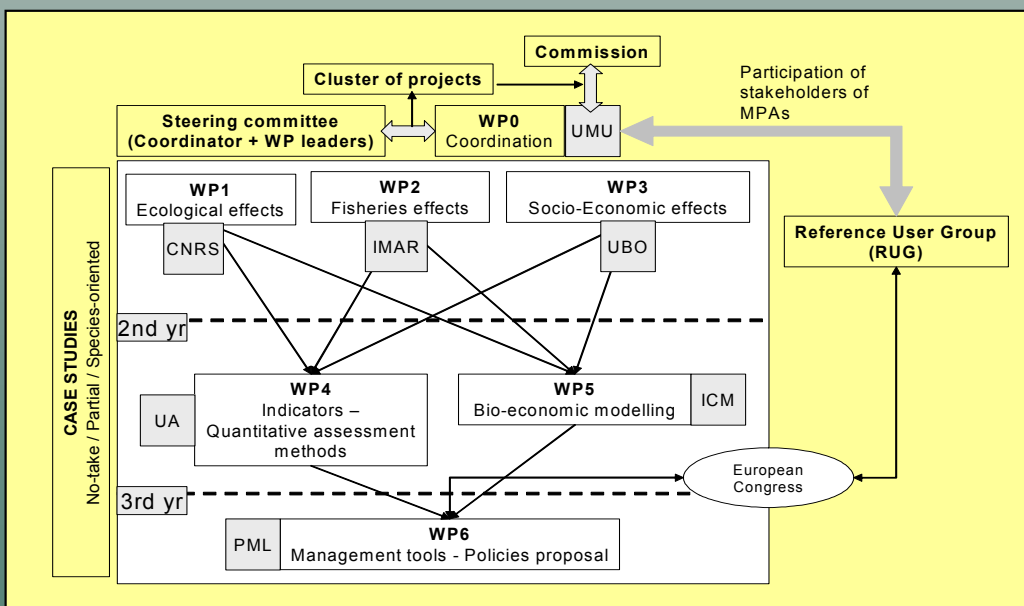
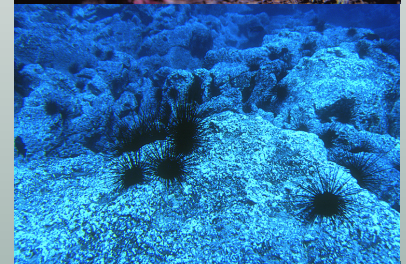
WP2: Fishery effects of MPAs

WP3: Socio-economic impacts of MPAs

WP4: Providing and evaluating impact indicators of MPAs

WP5: Bio-economic modelling of MPA effects

WP6: Management tools – Policy proposals





- Workpackages 1-3 aim to identify and quantify ecological (WP1), fishery (WP2) and socio-economic (WP3) effects of MPAs, and to produce a field database for subsequent global meta-analysis and modelling.

- A set of indicators will be chosen to represent the performance of MPAs with respect to their objectives under the different management regimes and MPA typologies identified (WP4). Indicators are intended to enhance communication, transparency, effectiveness and accountability in the management of MPAs.

- The results of the BEMMFISH project (Bio-economic Modelling of Mediterranean Fisheries, Q5RS-2001-01533) will be used in the quantitative analysis of the socio-economic effects of MPAs (WP5). The model accounts for multiple species and multi-species interactions, multiple fleets (disaggregated at the level of vessel) and gear types.

- WP6 aims to produce guidelines and tools, to be integrated into the decision-making and management process, that will provide an improved basis for designing, selecting and managing protected areas. WP6 will seek to identify the relationships between management and protection initiatives and their effects on biodiversity and fish and invertebrate stocks. In addition, management plans and tools to harmonize fisheries, conservation and other productive uses will be formulated.

The project will collate and analyse existing ecological, fisheries, and socio-economic data from established, well-studied MPAs selected as case studies.



- 1: Cabo de Palos
- 2: Tabarca
- 3: San Antonio
- 4: Serra Gelada and Benidorm small islands
- 5: Columbretes Islands
- 6: Anti-trawling zones at SE Spain
- 7: Medes Islands
- 8: Banyuls-Cerbère
- 9: Côte Bleue
- 10: Sinis Mal di Ventre
- 11: Bouches de Bonifacio
- 12: Ustica
- 13: Castellammare gulf / Trawl ban area
- 14: La Graciosa
- 15: La Restinga
- 16: Monte da Guia / Faial
- 17: Formigas islet / Dollabarot bank
- 18: Tuscany Archipelago
- 19: 25 NM Fisheries Conservation Zone-Malta
- 20: Rdm Majjiesa / Ras ir-Raheb



The project results will be disseminated on several levels:

- Via the website www.um.es/empafish
- Through occasional Newsletters
- In several Booklets
- Publications in national journals and in international peer-reviewed journals
- At an International Conference: *European Symposium on Marine Protected Areas as a Tool for Fisheries Management and Ecosystem Conservation. Emerging science and interdisciplinary approaches*
Murcia, Spain. September 25th-28th, 2007.

Organized by:



PROTECT

In collaboration with:



News

The following documents will be available on the EMPAFISH website:

- Booklet listing ecological data and MPA considered in the project
- Booklet synthesizing the different fishery regimes where MPAs have been established
- Literature review: application of cost-benefit analysis to the use of MPAs

Participants:



Univ. Palermo



IMAR - UAç



UBO



Univ. Malta



Univ. Pisa



EPHE / CNRS



Univ. Alicante



Univ. La Laguna



IMC



UNIVERSIDAD DE MURCIA



CSIC



IEO COB



PML



IAMC - CNR

Scientific Project Coordinator:

Dr. Ángel Pérez-Ruzafa

angelpr@um.es

Departamento de Ecología e Hidrología

Facultad de Biología

Universidad de Murcia

30100-Murcia (Spain)

<http://www.um.es/empafish>