



MOBIABILITY WEB PLATFORM

Piotr Muryjas

Andrzej Smolarz

Lublin University of Technology, Poland

AGENDA

- Introduction
- Communication protocol
- Web platform functionalities (examples)
- Applied technologies
- Examples of screenshots
- Conclusions

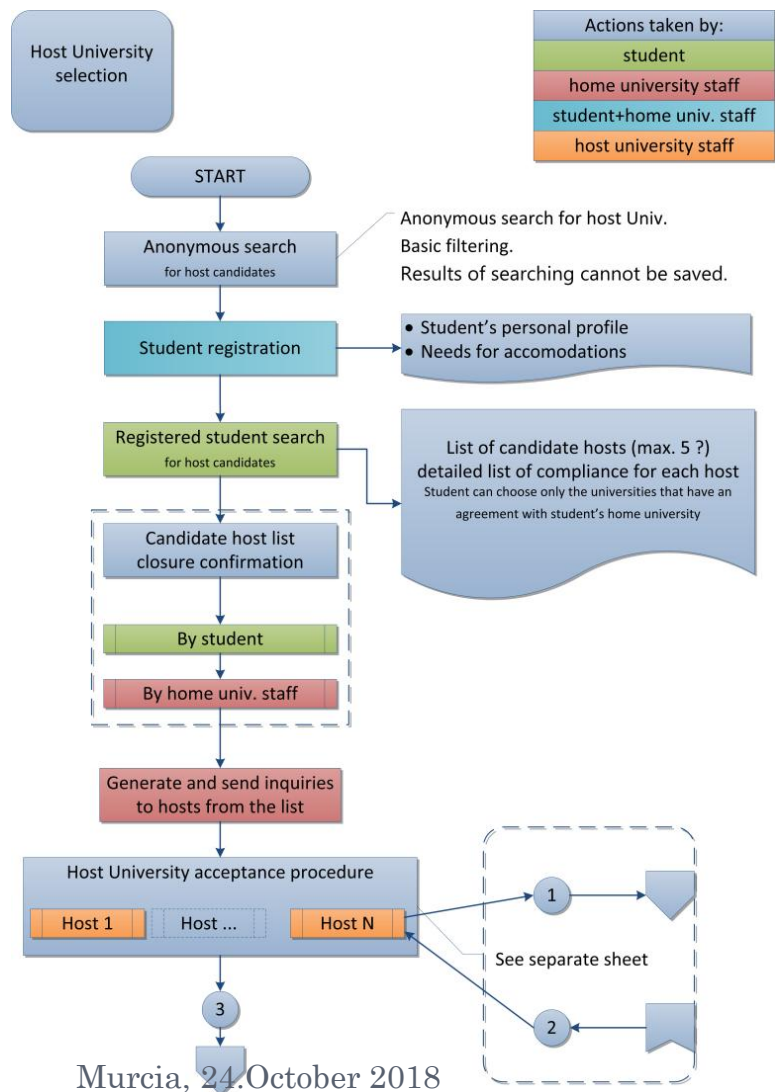
INTRODUCTION

- MobiAbility web platform is a tool that will allow students with disabilities to participate in the international mobility related to their academic education
- MobiAbility platform allows one to realise different processes that have to be performed before and during mobility as well as upon student return to home university
- Platform will allow to work in five languages: English, Spanish, Italian, German, French

COMMUNICATION PROTOCOL

- Definition of the protocol was the first step to be done before starting implementation of the platform
- It describes different processes related to student's mobility and the order in which they have to be performed
- Protocol consist of four phases:
 - Host university selection
 - Host university acceptance
 - Memorandum preperation
 - Mobility and assessment of mobility

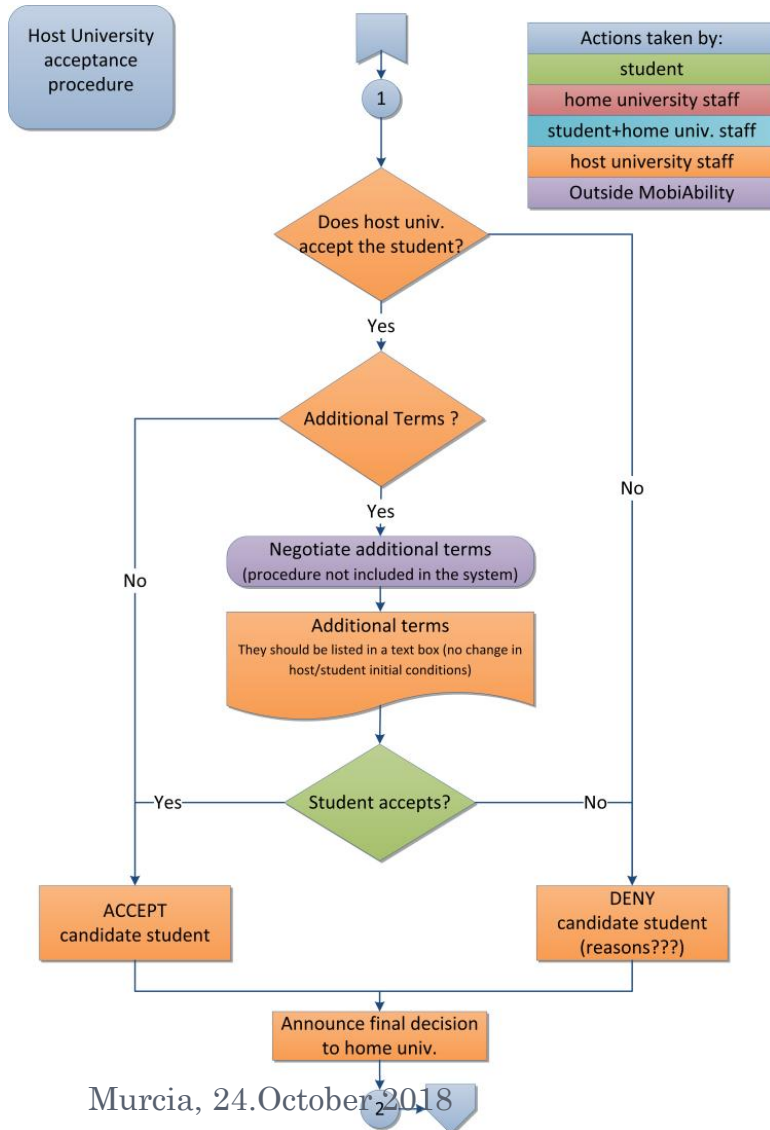
HOST UNIVERSITY SELECTION PHASE



This phase requires information about:

- Categories of needs
- Needs
- Organisation categories and types
- Universities and their faculties
- Needs satisfied by particular faculties
- University staff engaged in organisation of student mobility

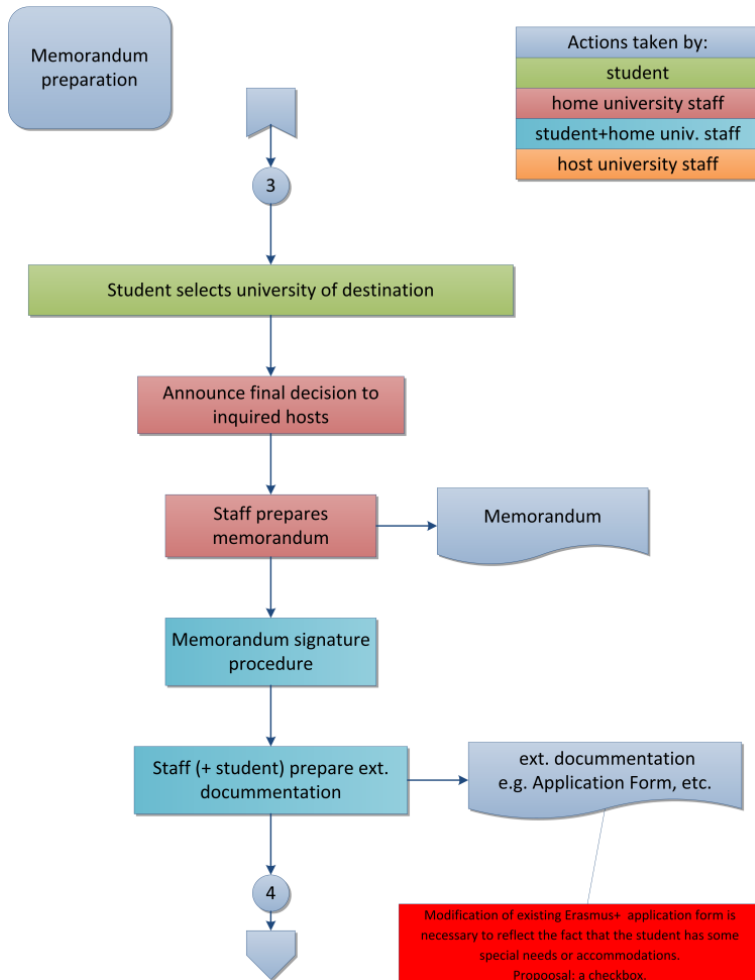
HOST UNIVERSITY ACCEPTANCE PHASE



This phase requires information about:

- Some data from the previous phase
- University staff engaged in the acceptance phase

MEMORANDUM PREPARATION PHASE



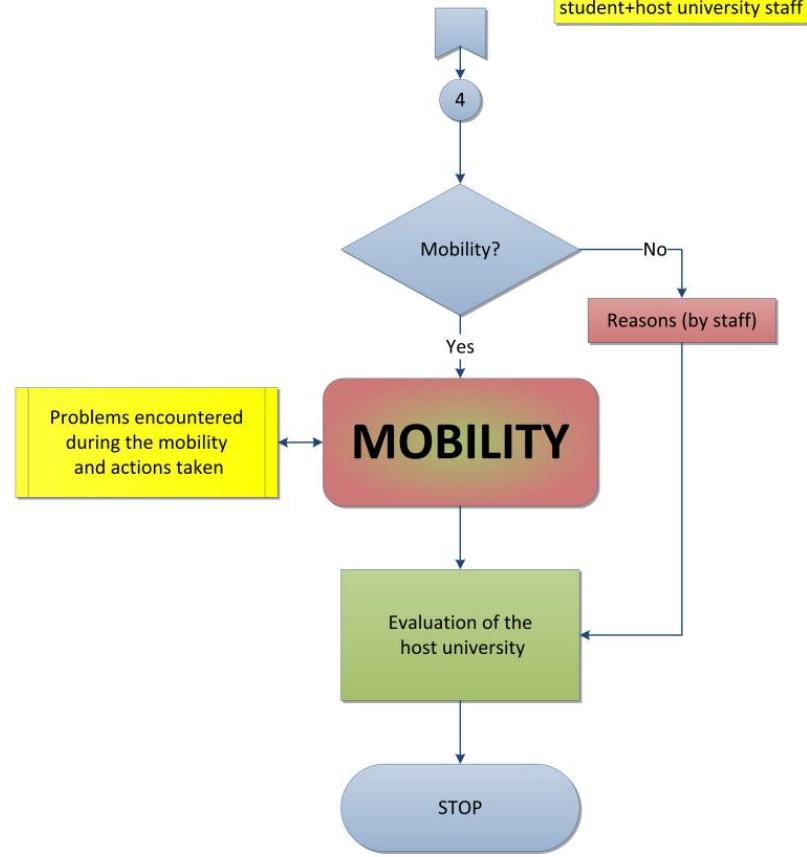
This phase requires information about:

- Some data from the previous phases
- Memorandum template
- University staff engaged in organisation of student mobility during this phase

MOBILITY AND MOBILITY ASSESSMENT PHASE

Mobility and mobility assesment

Actions taken by:
student
home university staff
student+home univ. staff
host university staff
student+host university staff



This phase requires information about:

- Some data from the previous phases
- Categories of problems related to the mobility
- Specific problems that may occur during the mobility
- Categories of evaluation criteria
- Specific criteria used to assess student's mobility

WEB PLATFORM FUNCTIONALITIES (1)

- Searching for universities for mobility
- Student account creation
- Defining student's needs related to mobility
- Adding university to favourites and preferable
- Choosing the mobility programme
- Reporting the problems during mobility
- Mobility assessment

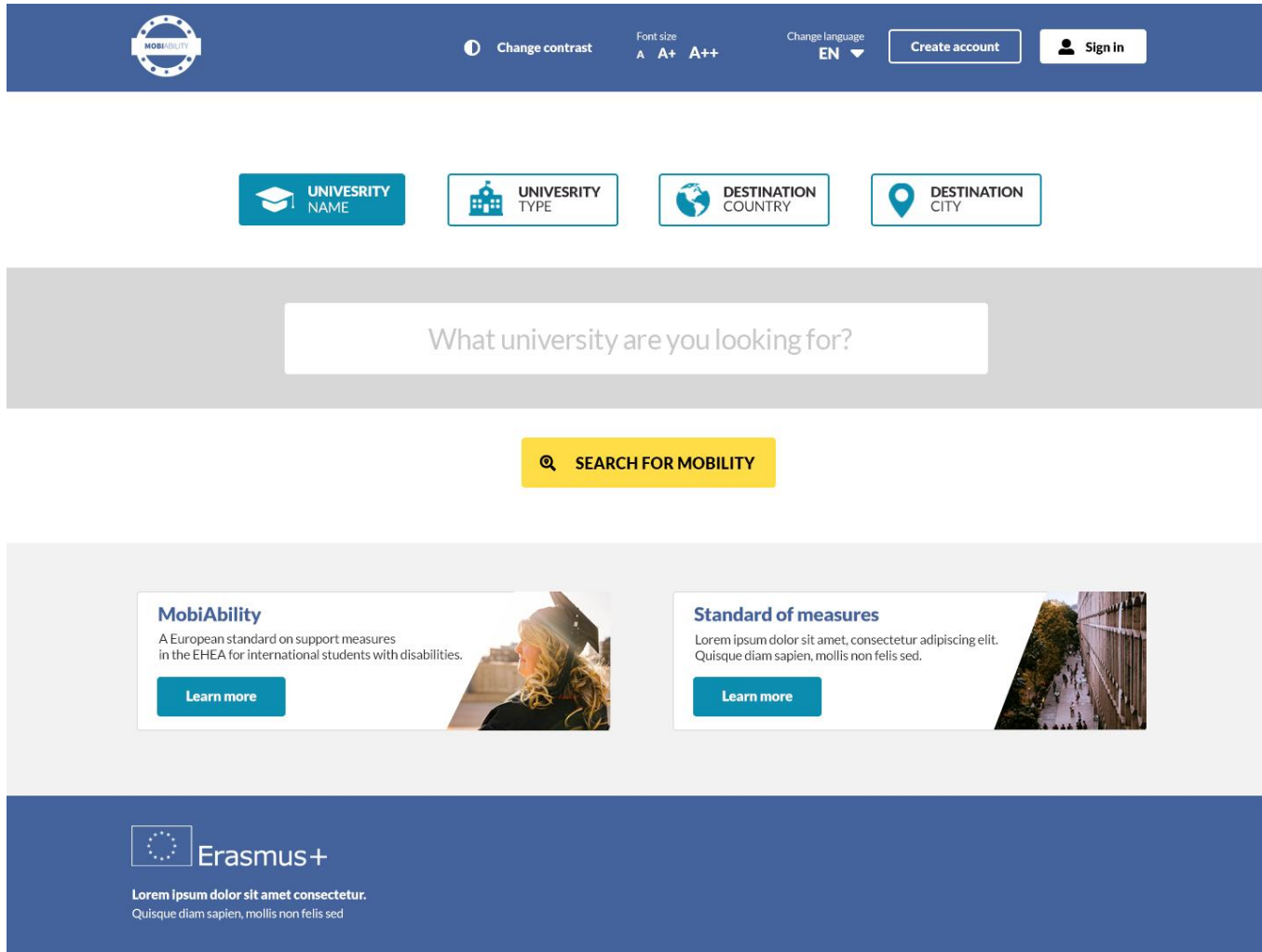
WEB PLATFORM FUNCTIONALITIES (2)

- Validation of the student's account
- Verification of the student's proposal concerning her/his mobility
- Acceptance of the student for mobility
- Generating memorandum between home and host university
- Solving the problems that may occur during student's mobility

APPLIED TECHNOLOGIES

- Database – MySQL
- Database language – SQL
- Programming language – PHP
- Visualisation – HTML and CSS (CSS is a standard file used to define the view(s) of the webpage(s))
- Script language – JavaScript (to define visual effects on the website)

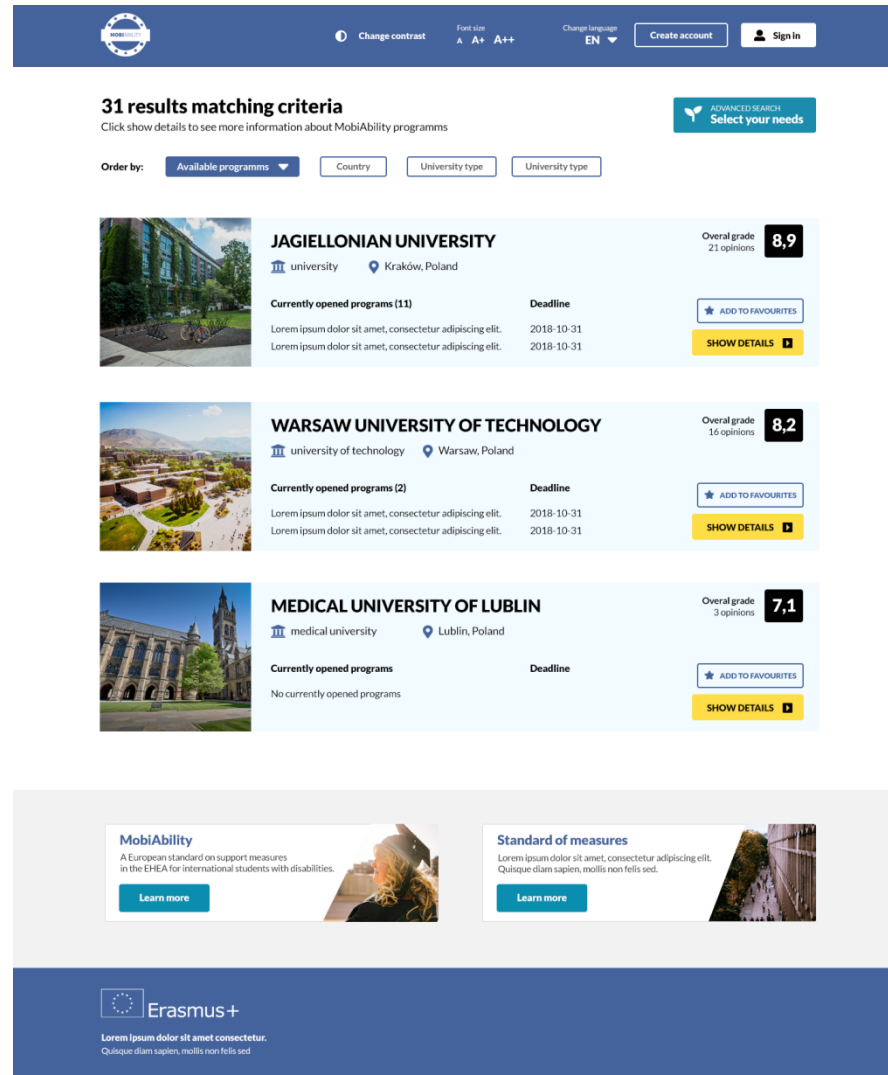
EXAMPLES OF SCREENSHOTS



The screenshot displays the home page of the MobiAbility platform. At the top, there is a dark blue navigation bar containing the MobiAbility logo, a 'Change contrast' button, font size options (A, A+, A++), a language dropdown set to 'EN', and buttons for 'Create account' and 'Sign in'. Below this is a search section with four filter buttons: 'UNIVERSITY NAME' (with a graduation cap icon), 'UNIVERSITY TYPE' (with a building icon), 'DESTINATION COUNTRY' (with a globe icon), and 'DESTINATION CITY' (with a location pin icon). A large white search input field is centered below these filters, containing the placeholder text 'What university are you looking for?'. A yellow 'SEARCH FOR MOBILITY' button is positioned below the search field. The main content area features two promotional cards. The first card, titled 'MobiAbility', describes it as a European standard on support measures for international students with disabilities and includes a 'Learn more' button and an image of a student. The second card, titled 'Standard of measures', contains placeholder text and a 'Learn more' button with an image of a university walkway. The footer is a dark blue bar with the Erasmus+ logo, the text 'Erasmus+', and placeholder text: 'Lorem ipsum dolor sit amet consectetur. Quisque diam sapien, mollis non felis sed.'

EXAMPLES OF SCREENSHOTS

MobiAbility platform – web page with results of basic search



The screenshot shows the top navigation bar with the Erasmus+ logo, a search icon, and links for 'Change contrast', 'Font size', 'Change language', 'Create account', and 'Sign in'. Below the navigation, a blue banner displays '31 results matching criteria' and a button for 'ADVANCED SEARCH Select your needs'. The main content area features a search filter section with 'Order by' options: 'Available programmms', 'Country', 'University type', and 'University type'. Three university results are listed:

- JAGIELLONIAN UNIVERSITY**: Overall grade 8,9 (21 opinions), Kraków, Poland. Currently opened programs (11). Deadlines: 2018-10-31. Includes 'ADD TO FAVOURITES' and 'SHOW DETAILS' buttons.
- WARSAW UNIVERSITY OF TECHNOLOGY**: Overall grade 8,2 (16 opinions), Warsaw, Poland. Currently opened programs (2). Deadlines: 2018-10-31. Includes 'ADD TO FAVOURITES' and 'SHOW DETAILS' buttons.
- MEDICAL UNIVERSITY OF LUBLIN**: Overall grade 7,1 (3 opinions), Lublin, Poland. No currently opened programs. Includes 'ADD TO FAVOURITES' and 'SHOW DETAILS' buttons.

At the bottom, there are two informational boxes: 'MobiAbility' (A European standard on support measures in the EHEA for international students with disabilities) and 'Standard of measures' (Lorem ipsum dolor sit amet, consectetur adipiscing elit. Quisque diam sapien, mollis non felis sed). The footer contains the Erasmus+ logo and a placeholder text: 'Lorem ipsum dolor sit amet consectetur. Quisque diam sapien, mollis non felis sed'.

EXAMPLES OF SCREENSHOTS

MobiAbility platform – web page with results of advanced search

31 results matching criteria
Click show details to see more information about MobiAbility programmes

Order by: Available programmes Country University type University type

Advanced search
Select your needs from categories below and search again

- Learning & Education
- General Tasks And Demands (in the University)
- Communication
- Mobility
- Self-care & Health**
- Domestic life
- Interpersonal interactions and relationships
- Major life areas

Self-care & Health
Lorem ipsum dolor sit amet, consectetur adipiscing elit. Quisque diam sapien, mollis non felis sed, rhoncus maximus ante.

- Keep up a specific life care system?
- Medical attendance
- Nursing attendance
- Personal assistant for basic activities of daily life
- Attendance from a specialist
- Physiotherapeutic attendance
- Psychological attendance
- Information in case of possible emergency
- Funding for health and self-care
- Other technical aids/adaptations

SEARCH FOR MOBILITY

JAGIELLONIAN UNIVERSITY
Overall grade: 8,9 (21 opinions)
university | Kraków, Poland
Currently opened programs (11) | Deadline: 2018-10-31
Lorem ipsum dolor sit amet, consectetur adipiscing elit.
[ADD TO FAVOURITES](#)
[SHOW DETAILS](#)

WARSAW UNIVERSITY OF TECHNOLOGY
Overall grade: 8,2 (16 opinions)
university of technology | Warsaw, Poland
Currently opened programs (2) | Deadline: 2018-10-31
Lorem ipsum dolor sit amet, consectetur adipiscing elit.
[ADD TO FAVOURITES](#)
[SHOW DETAILS](#)

MEDICAL UNIVERSITY OF LUBLIN
Overall grade: 7,1 (3 opinions)
medical university | Lublin, Poland
Currently opened programs | Deadline:
No currently opened programs
[ADD TO FAVOURITES](#)
[SHOW DETAILS](#)

EXAMPLES OF SCREENSHOTS

MobiAbility platform – web page with detailed information about university

WARSAW UNIVERSITY OF TECHNOLOGY Overall grade 8.2
16 opinions

[university of technology](#) Warsaw, Poland

Lorem ipsum dolor sit amet, consectetur adipiscing elit. Quisque diam sapien, mollis non felis sed, rhoncus maximus ante. Pellentesque at volutpat nibh. Praesent sem tortor, mollis aliquet felis quis, eleifend vehicula eros.
 Lorem ipsum dolor sit amet, consectetur adipiscing elit. Sed dignissim purus sit amet nunc trincidunt, quis mattis elit facilisis. Nam finibus velit eu ligula pharetra finibus a mi. Suspendisse vitae hendrerit nisi, quis lobortis arcu.
 Vivamus egestas purus in metus pulvinar, vel placerat neque accumsan. Sed congue quam ligula, sit amet finibus elit maximus nec. Morbi condimentum volutpat viverra. Mauris non nunc et neque porta molestie eget dapibus magna. Nullam sit amet dictum sapien, Quisque placerat accumsan leo ut vestibulum, Maecenas dictum ex nec sagittis interdum.

Faculties on this university:

- Vivamus egestas purus in metus pulvinar
- Vel placerat neque accumsan
- Sed congue quam ligula, sit amet finibus elit maximus nec.
- Morbi condimentum volutpat viverra.
- Mauris non nunc et neque porta molestie eget dapibus magna.
- Nullam sit amet dictum sapien.
- Quisque placerat accumsan leo ut vestibulum.

CURRENTLY OPENED PROGRAMS	DEADLINE
Lorem ipsum dolor sit amet, consectetur adipiscing elit.	2018-10-30
Quisque diam sapien, mollis non felis sed, rhoncus maximus ante.	2018-11-30
Pellentesque at volutpat nibh.	2019-01-15

MobiAbility
 A European standard on support measures
 in the ERGA for international students with disabilities.

[Learn more](#)

Standard of measures
 Lorem ipsum dolor sit amet, consectetur adipiscing elit.
 Quisque diam sapien, mollis non felis sed.

[Learn more](#)

Erasmus+ Lorem ipsum dolor sit amet consectetur. Quisque diam sapien, mollis non felis sed

EXAMPLES OF SCREENSHOTS

MobiAbility platform – creating student's account

- Mobility
- Self-care & Health
- Domestic life
- Interpersonal interactions and relationships
- Major life areas
- Participation in community, social and civic life
- Any other special need
- Nursing attendance
- Attendance from a specialist
- Psychological attendance
- Funding for health and self-care
- Personal assistant for basic activities or daily life
- Physiotherapeutic attendance
- Information in case of possible emergency
- Other technical aids/adaptations

MobiAbility
A European standard on support measures in the EHEA for international students with disabilities.
[Learn more](#)

Standard of measures
Lorem ipsum dolor sit amet, consectetur adipiscing elit. Quisque diam sapien, mollis non felis sed.
[Learn more](#)

CONCLUSIONS

- MobiAbility platform is a unique solution that allows the students with disabilities to participate in the international exchange
- The interface of this platform will assure the simplicity to perform different activities related to mobility preparation, its realisation and assessment
- Platform will be hosted by Murcia University
- MobiAbility web platform is still under construction (coddng and interface designing are in progress)